

# Cross-Ecosystem Linkages: Transfer of Polyunsaturated Fatty Acids From Streams to Riparian Spiders via Emergent Insects

**Journal Article****Author(s):**

Kowarik, Carmen; Martin-Creuzburg, Dominik; Robinson, Christopher T.

**Publication date:**

2021

**Permanent link:**

<https://doi.org/10.3929/ethz-b-000498470>

**Rights / license:**

[Creative Commons Attribution 4.0 International](#)

**Originally published in:**

Frontiers in Ecology and Evolution 9, <https://doi.org/10.3389/fevo.2021.707570>



# Cross-Ecosystem Linkages: Transfer of Polyunsaturated Fatty Acids From Streams to Riparian Spiders via Emergent Insects

Carmen Kowarik<sup>1,2\*</sup>, Dominik Martin-Creuzburg<sup>3</sup> and Christopher T. Robinson<sup>1,2</sup>

<sup>1</sup> Eawag, Department of Aquatic Ecology, Dübendorf, Switzerland, <sup>2</sup> Institute of Integrative Biology, ETH Zurich, Zurich, Switzerland, <sup>3</sup> Limnological Institute, University of Konstanz, Konstanz, Germany

## OPEN ACCESS

### Edited by:

Björn Kristian Klatt,  
Lund University, Sweden

### Reviewed by:

Sydney Moyo,  
Rhodes College, United States  
Breeanne Jackson,  
University of California, Merced,  
United States

### \*Correspondence:

Carmen Kowarik  
carmen.kowarik@eawag.ch

### Specialty section:

This article was submitted to  
Biogeography and Macroecology,  
a section of the journal  
Frontiers in Ecology and Evolution

**Received:** 10 May 2021

**Accepted:** 15 June 2021

**Published:** 08 July 2021

### Citation:

Kowarik C, Martin-Creuzburg D  
and Robinson CT (2021)  
Cross-Ecosystem Linkages: Transfer  
of Polyunsaturated Fatty Acids From  
Streams to Riparian Spiders via  
Emergent Insects.  
Front. Ecol. Evol. 9:707570.  
doi: 10.3389/fevo.2021.707570

Polyunsaturated fatty acids (PUFAs) are essential resources unequally distributed throughout landscapes. Certain PUFAs, such as eicosapentaenoic acid (EPA), are common in aquatic but scarce in terrestrial ecosystems. In environments with low PUFA availability, meeting nutritional needs requires either adaptations in metabolism to PUFA-poor resources or selective foraging for PUFA-rich resources. Amphibiotic organisms that emerge from aquatic ecosystems represent important resources that can be exploited by predators in adjacent terrestrial habitats. Here, we traced PUFA transfer from streams to terrestrial ecosystems, considering benthic algae as the initial PUFA source, through emergent aquatic insects to riparian spiders. We combined carbon stable isotope and fatty acid analyses to follow food web linkages across the ecosystem boundary and investigated the influence of spider lifestyle (web building vs. ground dwelling), season, and ecosystem degradation on PUFA relations. Our data revealed that riparian spiders consumed considerable amounts of aquatic-derived resources. EPA represented on average 15 % of the total fatty acids in riparian spiders. Season had a strong influence on spider PUFA profiles, with highest EPA contents in spring. Isotope data revealed that web-building spiders contain more aquatic-derived carbon than ground dwelling spiders in spring, although both spider types had similarly high EPA levels. Comparing a natural with an anthropogenically degraded fluvial system revealed higher stearidonic acid (SDA) contents and  $\Sigma\omega3/\Sigma\omega6$  ratios in spiders collected along the more natural river in spring but no difference in spider EPA content between systems. PUFA profiles of riparian spiders were distinct from other terrestrial organisms and more closely resembled that of emergent aquatic insects (higher  $\Sigma\omega3/\Sigma\omega6$  ratio). We show here that the extent to which riparian spiders draw on aquatic PUFA subsidies can vary seasonally and depends on the spider's lifestyle, highlighting the complexity of aquatic-terrestrial linkages.

**Keywords:** ecosystem degradation, emergent insects, fluvial systems, food web, PUFA – polyunsaturated fatty acids, resource subsidies, riparian spiders, stable isotope C 13

## INTRODUCTION

Aquatic and terrestrial ecosystems are open units that are connected in a tangled web via various resource fluxes oriented in both directions (Baxter et al., 2005). This cross-boundary transfer of resources (allochthonous resource subsidies) is essential towards sustaining both ecosystems. Some relevant examples of resource transfer from aquatic to terrestrial systems are fish predation by riparian predators (or humans), amphibiotic organisms leaving the water during their life cycle, and water birds feeding on aquatic plants (Richardson et al., 2010; Gladyshev et al., 2013). Riparian communities often rely on aquatic-derived subsidies with whole populations at times being fueled by aquatic resources, most notably in resource poor environments (Anderson and Polis, 1998; Sabo and Power, 2002). Emergent aquatic insects play a crucial role in adjacent riparian food webs, as they serve as prey for various predators, such as birds, bats, lizards (Sabo and Power, 2002; Iwata et al., 2003; Lam et al., 2013) spiders or beetles (Paetzold et al., 2005). The abundance of spiders, for instance, has been shown to correlate strongly with the amount of emergent aquatic insects (Kato et al., 2003, 2004; Paetzold et al., 2005, 2008, 2011; Iwata, 2007; Burdon and Harding, 2008) and stable isotope analysis revealed that some riparian spiders obtain up to 100 % of their carbon from aquatic-derived organic matter (Sanzone et al., 2003). Stable isotope analysis has been used successfully to disentangle food webs and differentiate between allochthonous and autochthonous carbon sources in consumer tissues (DeNiro and Epstein, 1978), although its use is dependent on the degree of isotopic discrimination between basal resources (Collier et al., 2002). Aquatic-derived organic material is generally more depleted in  $\delta^{13}\text{C}$  than terrestrial organic material (Rounick and Winterbourn, 1986) and this difference can be used to estimate dietary contributions. More recently compound-specific stable isotope analysis (CSIA) has been suggested as an additional method to trace energy flows through food webs (Twining et al., 2020b).

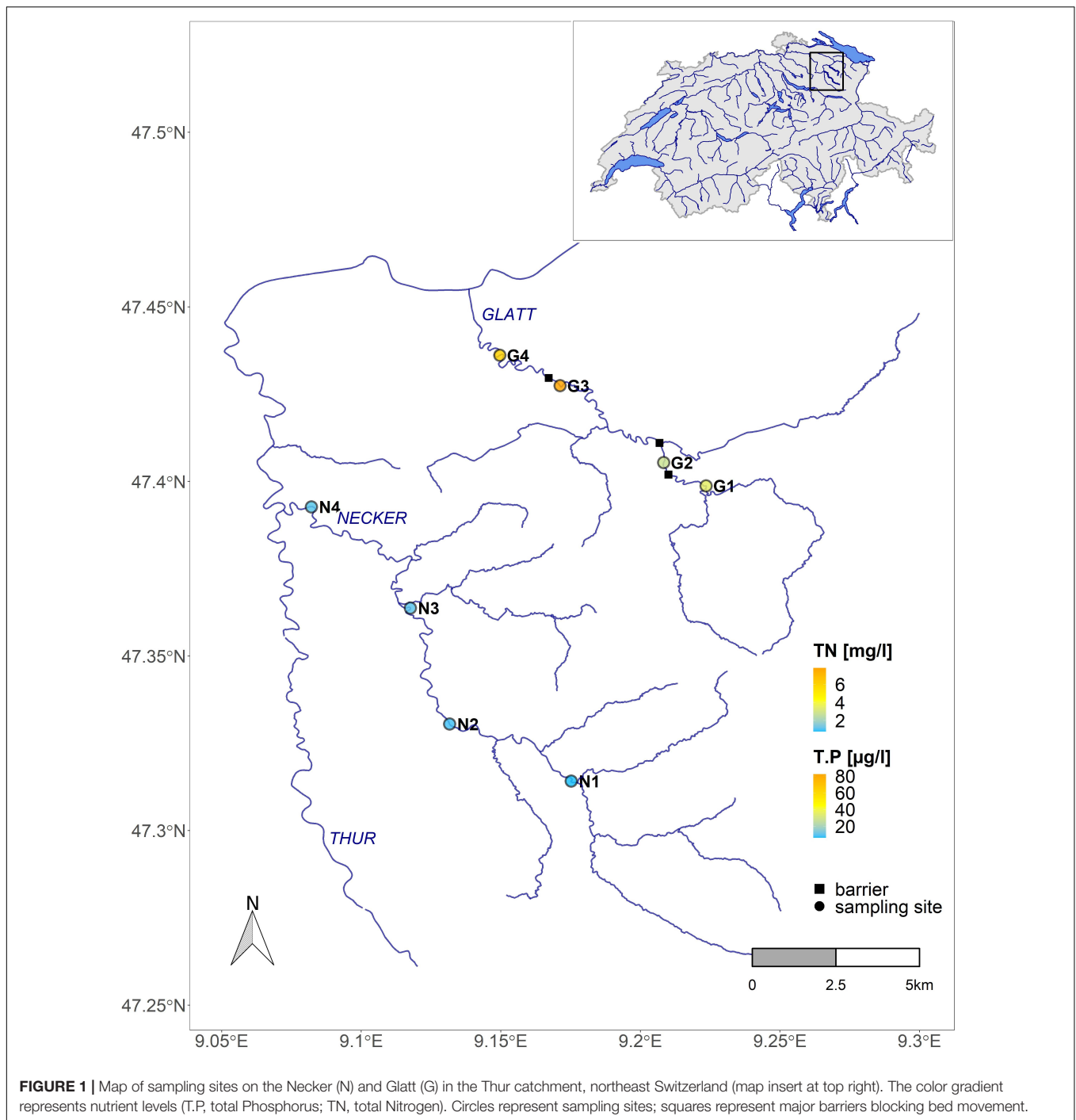
The strong effect of aquatic subsidies on riparian communities cannot be explained solely by quantity of carbon transfer, as biomass fluxes from aquatic to terrestrial ecosystems are often lower than fluxes in the opposite direction (Bartels et al., 2012). Possible explanations are still poorly understood. One aspect to consider are differences in insect phenology between aquatic and terrestrial ecosystems. Aquatic insects typically emerge earlier in the year than terrestrial insects thus representing an important dietary supplement for riparian predators when the amount of terrestrial food sources in spring is still low (Nakano and Murakami, 2001). In addition, aquatic subsidies are thought to be of higher nutritional quality and energy density than terrestrial subsidies (Moyo et al., 2017).

One important determinant of nutritional quality is the content of polyunsaturated fatty acids (PUFAs), especially the content of  $\omega$ -3 PUFAs, which is typically much higher in aquatic than in terrestrial resources (Hixson et al., 2015). It is generally assumed that the C18 PUFAs linoleic acid (LIN, 18:2 $\omega$ -6) and  $\alpha$ -linolenic acid (ALA, 18:3 $\omega$ -3) are essential for all animals and thus have to be taken up with food, albeit the ability of some insects to synthesize LIN has been

documented (Blomquist et al., 1991). Dietary uptake of the physiologically important long-chain (LC,  $\geq$  C20) PUFAs, such as eicosapentaenoic acid (EPA, 20:5 $\omega$ -3), is also important. Even though many animals are able to elongate and desaturate dietary C18 precursors to LC-PUFAs, this internal bioconversion pathways is often inefficient and energy consuming and thus incapable of covering LC-PUFA demands (Pawlosky et al., 1997; Brenna et al., 2009; Castro et al., 2012). In this context, it is generally assumed that consumers largely reflect the PUFA profile of their food (Iverson et al., 2004; Brett et al., 2006; Torres-Ruiz et al., 2010). LC-PUFAs are important because of their central role in membrane physiology and as precursors for signaling molecules acting on reproduction and the immune system (Stillwell and Wassall, 2003; Stanley, 2014; Schlotz et al., 2016). Better growth and development on naturally LC-PUFA-rich diets and diets that were supplemented with LC-PUFAs has been documented for different species (Müller-Navarra et al., 2000; Martin-Creuzburg et al., 2010; Twining et al., 2016b).

The fundamental dichotomy in the occurrence of PUFAs in aquatic and terrestrial ecosystems, with aquatic systems being generally richer in  $\omega$ -3 PUFAs, especially long chain ones, derives from differences in PUFA profiles of the respective primary producers (Hixson et al., 2015). Several algal groups produce high amounts of LC-PUFAs, such as EPA, whereas most terrestrial plants, except for some bryophytes, lack the ability to synthesize PUFAs with more than C18 atoms (Harwood, 1996; Sayanova and Napier, 2004; Uttaro, 2006; Hixson et al., 2015). In fact, aquatic ecosystems have been suggested to be the principal source of LC-PUFAs and a net transfer from aquatic to terrestrial systems has been recognized (Moyo et al., 2017). Emergent aquatic insects represent an important vector for LC-PUFA transfer across the ecosystem boundary to terrestrial consumers (Gladyshev et al., 2013; Martin-Creuzburg et al., 2017; Popova et al., 2017; Fritz et al., 2019) and some riparian predators might have specialized on exploiting this high-quality prey. Indeed, low dietary LC-PUFA provision can cause impaired development or lower breeding success of certain species (e.g., tree swallows), even with an abundance of other food sources (Twining et al., 2016a, 2018). PUFA availability might also be the reason why, e.g., riparian lizards without access to aquatic insects show reduced growth rates (Sabo and Power, 2002). Low amounts of aquatic-derived subsidies (i.e., low LC-PUFA input) are also linked with reduced immune function in riparian spiders (Fritz et al., 2017). Human impacts on river morphology (e.g., channelization, construction of barriers) or water quality (e.g., pollution, nutrient levels) can alter cross-ecosystem nutrient fluxes, potentially resulting in resource mismatches and a decoupling of aquatic and terrestrial systems (Laeser et al., 2005; Paetzold et al., 2011; Larsen et al., 2016; Muehlbauer et al., 2020).

Here, we examined the content of five physiologically important PUFAs, i.e., linoleic acid (LIN, 18:2 $\omega$ -6),  $\alpha$ -linolenic acid (ALA, 18:3 $\omega$ -3), stearidonic acid (SDA, 18:4 $\omega$ -3), arachidonic acid (ARA, 20:4 $\omega$ -6), and eicosapentaenoic acid (EPA, 20:5 $\omega$ -3) in riparian spiders along two rivers with different degrees of anthropogenic disturbance (**Figure 1**). In addition, we checked samples for the physiologically important



docosahexaenoic acid (DHA, 22:5  $\omega$ -3), although DHA levels are normally lower in freshwater than in marine systems (Twining et al., 2020a). Two types of riparian spiders were analyzed at different times of the year: ground-dwelling spiders roaming the riparian area for prey and web-building spiders that are relatively stationary in prey capture. We explored potential differences in individual PUFA content between spider types and to what extent the different spider types reflected the PUFA profiles of aquatic emergent insects. We used site-specific differences in

PUFA provision to track PUFA transfer from periphyton via emergent aquatic insects to riparian spiders.

Our main hypotheses included: (1) riparian spiders are rich in EPA and their  $\Sigma\omega3/\Sigma\omega6$  ratio is comparable to aquatic organisms because they feed on emergent aquatic insects; (2) aquatic-derived PUFA content of spiders is highest in spring when aquatic emergent insects are most abundant; (3) emergent aquatic insect consumption depends on spider type (web-building vs. ground-dwelling), because the two groups have

access to different prey types (e.g., ground vs aerial prey) resulting in differences in PUFA content between them; and (4) riparian spiders living along anthropologically disturbed systems ingest low amounts of aquatic material and contain less aquatic-derived PUFAs because human impacts can alter cross ecosystem linkages such that spiders cannot draw on aquatic resources. To test our hypotheses, we used a combination of fatty acid, carbon stable isotope and CSIA analyses. To our knowledge, this is one of the first studies showing a tight link between PUFA profiles of riparian spiders and emergent aquatic insects.

## MATERIALS AND METHODS

### Site Description

Sampling was conducted at eight sites along two streams in the Thur River catchment in northeast Switzerland (**Figure 1**). Both streams (Necker, Glatt) are sixth-order pre-alpine streams with a flow regime including regular natural flood events. The Necker is a non-regulated system with low nutrient levels and a natural flow-sediment regime. It drains a basin of ca. 126 km<sup>2</sup> with elevation ranging from 1550 to 550 m a.s.l. and has a long-term mean annual discharge of 3.3 m<sup>3</sup>/s (hydrograph station Achsäge). Sampling sites ( $n = 4$ ) ranged in elevation from ca. 700 (upper most site) to 550 m a.s.l. (lower most site). The Glatt is a heavily regulated system with many channel alterations realized over the years, including numerous barriers impeding sediment movement and changing river morphology. In addition, nutrient levels are higher (TN: 4–8 mg/l, T-P: 30–70 µg/l) than in the Necker, due to the strong agricultural land use. The Glatt drains a basin of ca. 90 km<sup>2</sup> with elevation ranging between 950 and 480 m a.s.l. Long-term mean annual discharge is 2.7 m<sup>3</sup>/s at the hydrograph station Oberbüren. Here, sampling sites ( $n = 4$ ) ranged in elevation between 620 to 500 m a.s.l.

### Field Sampling

Samples were taken between April and October 2019. Water samples, periphyton, emergent aquatic insects, and spiders were collected in spring (April/May), summer (June/July/August) and autumn (September/October) to assess seasonal differences. No sampling was conducted during winter as most spiders are not active during the winter month, because they are either hibernating in the soil or die in autumn and the next generation hatches from resting eggs in spring. Benthic algae (as periphyton) were taken to quantify resource availability at each site and season. Three stones were randomly selected from the riverbed and returned to the laboratory. The biofilm on each stone was detached with a metal brush and an aliquot of the periphyton suspension was filtered through a glass fiber filter (Whatman GF/F). This procedure was done twice (2 aliquots), one filter was used for fatty acid extraction (frozen at –20°C until analysis) and the other for determination of ash free dry mass (AFDM). For AFDM estimation, filters were dried at 60°C, weighed, combusted for 3 h at 500°C, and then reweighed.

Emergent aquatic insects were captured alive using floating emergence traps with a base area of 0.25 m<sup>2</sup> and mesh size of 100 µm. Three emergence traps were deployed at each site.

Sampling started in early April with emergence traps deployed weekly (2–3 days/week) until mid-May and then monthly (2x 2–3 days/month) from June to October. Adult aquatic insects were collected from emergence traps after 2–3 days on each deployment. Samples were returned to the laboratory, frozen, and then counted and identified to the lowest practicable taxonomic level. Samples were stored short-term (a few weeks) at –20°C and longer (month) at –80°C when necessary. Trichoptera were not considered in this study because of too few samples for adequate assessment. As reference material, terrestrial insects were collected once per season using a sweep net, returned to the laboratory and frozen as described above until further analysis.

Riparian spiders were collected within 0–2 m distance from the shoreline once per season at each site. We collected spiders from two different functional feeding guilds (Wise, 1993; Nyffeler et al., 1994; Sanzone et al., 2003); i.e., ground-dwelling spiders hunting for their prey on the ground (ground spiders) and spiders that use orb-webs for prey capture (web spiders). All ground spiders belonged to the family Lycosidae (genera *Pardosa* or *Pirata/Piratula*) and all web spiders belonged to the family Tetragnathidae (genus: *Tetragnatha*). Spiders in both groups were collected using a mouth aspirator. In addition, spiders were sampled at different distances from the stream at the Necker (site N4) in June 2020 to assess potential changes in PUFA content with distance from the river. Here, at least three individuals of each group were collected at 0–2 m, 5–10 m, 20–30 m, 40–50 m distance from the stream shore. All collected spiders were returned to the laboratory, kept in containers over night to allow gut clearance, and then frozen for later analysis.

### Laboratory Procedures

#### Fatty Acid Analysis

We analyzed fatty acids of 72 periphyton samples, 233 emergent insect samples (85 Diptera, 75 Ephemeroptera, 73 Plecoptera), 140 spiders (69 web spiders, 71 ground spiders, in addition 24 spider samples for distance gradient) and, as reference, 9 terrestrial insect samples (Diptera). The PUFAs analyzed included LIN, ALA, SDA, ARA, and EPA. Prior to fatty acid extraction, samples were freeze-dried, and the dry mass was determined with an ultrafine balance. Weighed samples were extracted in dichloromethane/methanol (2:1 v/v) over night and an internal standard (17:0 ME and 23:0 ME) was added for analysis. After 5 min in an ultrasound bath, particles were separated by centrifugation (3500 g, 5 min). The supernatant of each sample was evaporated to dryness under nitrogen, resuspended in 4 ml methanolic HCl for transesterification, and then incubated at 60°C for 20 min to obtain fatty acid methyl esters (FAMES). After cooling, hexane was added, and each sample was mixed and the upper phase consisting of hexane was transferred to a new vial. This procedure was repeated two more times, the hexane fractions pooled, and the composite sample evaporated to dryness under nitrogen. Each sample was resuspended in 20 to 200 µl of hexane, depending on initial sample dry mass, and analyzed for FAME content using gas chromatography (7890B gas chromatograph, Agilent Technologies, Waldbronn, Germany); configuration



details (Martin-Creuzburg et al., 2010). fatty acids were identified based on their retention time and their mass spectra, and quantified by comparison to internal standards using multipoint calibration curves of known concentration (for details see Martin-Creuzburg et al., 2017).

### Stable Isotope Analysis

We used the carbon stable isotope ratio ( $\delta^{13}\text{C}$ ) to estimate the contribution of aquatic-derived material to riparian spiders and to compare with the results from fatty acid analysis. Samples from both spider groups, emergent aquatic insects from each site and season, and terrestrial insects were used for carbon stable isotope analysis (sampled as described above). For each sample, 0.7–0.9 mg of freeze-dried ground material was weighed and placed into tin capsules. Individual samples were combusted in a Vario PYRO Cube elemental Analyzer (Elementar Analysensysteme GmbH, Langenselblod, Germany) connected to an IsoPrime isotope ratio mass spectrometer (GV Instruments Ltd., Manchester, United Kingdom) to measure total C content and  $\delta^{13}\text{C}$ . The  $\delta^{13}\text{C}$  values are presented in permille (‰) after normalization to reference material (NBS 19, L-SVEC, IAEA-N-1 and IAEA-N-2, provided by Biogeochemical Laboratories, Indiana University). Analytical uncertainty was 0.1 ‰ for  $\delta^{13}\text{C}$ .

### Compound-Specific Stable Isotope Analysis

To validate the aquatic origin of LC-PUFAs, we analyzed 12 fatty acid extracts using CSIA. Carbon isotope ratios of combined C18 fatty acids and combined C20 fatty acids were analyzed using a GC-IRMS (Thermo Scientific; Trace Gas 1310 with a DB5MS column connected with GC Isolink to IR-MS: Delta V Advantage). Peak separation on this column was sufficient to differentiate between C18 and C20 fatty acids but did not allow to differentiate between single fatty acids. We used the following equation to account for differences in isotope signals due to addition of a methyl group during the conversion from fatty acids to FAME:

$$\delta^{13}\text{C}_{\text{FA}} = \frac{(n+1) \times \delta^{13}\text{C}_{\text{FAME}} - \delta^{13}\text{C}_{\text{MeHCl}}}{n} \quad (1)$$

where,  $n$  represents the number of C atoms in the fatty acids,  $\delta^{13}\text{C}_{\text{FAME}}$  isotope ratio of fatty acid methyl esters and  $\delta^{13}\text{C}_{\text{MeHCl}}$  isotope ratio of MeHCl used for the derivatization. All samples were measured twice, and the average used for validation. The  $\delta^{13}\text{C}$  of MeHCl was  $-23.01\text{‰}$ .

## Data Analysis

### PUFA Content in Riparian Spiders and Transfer Across Trophic Levels

All analyses were conducted in R 3.6.2 (R Core Team, 2019). Five individual PUFAs (LIN, ALA, SDA, ARA, and EPA) were examined (DHA was detectable in trace amounts only in a few samples and therefore excluded from the analyses). We investigated individual PUFA content of three trophic levels, i.e., periphyton, emergent aquatic insects and riparian spiders. Individual PUFA content was calculated on a relative basis (% of total FA).

Spider individual PUFA content and  $\Sigma\omega3/\Sigma\omega6$  ratio was compared among spider types, seasons and the two fluvial systems using a factorial ANOVA (type III) (factors = season, spider type, river) (Anova, package “car”; Fox and Weisberg, 2019). Main and interaction effects were calculated for all three levels. When interaction effects were significant ( $p < 0.05$ ), *post hoc* tests were run separately for each pair of combinations. When interactions were not significant ( $p > 0.05$ ), significant main effects ( $P < 0.05$ ) were tested. In both cases, multiple pairwise *post hoc* comparisons of estimated marginal means (EMMs) with tukey correction (package “emmeans”; Lenth, 2021) were conducted. Data were tested for normality and homogeneity of variance assumptions and transformed where required. Percent data were transformed using the arcsine square root transformation (Sokal and Rohlf, 1995). The values reported represent untransformed means.

We used the difference in PUFA provision (PUFA content in emerging aquatic insects and periphyton) between sites and seasons (see **Supplementary Material**) to explore the transfer of PUFAs across trophic levels. If the same differences occur at all levels, transfer is likely. We calculated average individual PUFA content for periphyton, each of the emergent insect orders, and the two spider types per site and season (as measurement were not paired within site); the values were arcsine square root transformed. We used average values to investigate if there is a positive relationship among trophic levels in regard to individual PUFAs. We used a linear mixed effects model (lmer package “lme4”; Bates et al., 2015) with individual PUFA content of the lower trophic level as the predictor variable. We included season and river as a random effect to account for the two different systems and multiple sampling at the same sites. The first step was from periphyton to emergent insects, the second from emergent insects to spiders. Conditional  $R^2$  (variance explained by complete model;  $R^2_c$ ) and marginal  $R^2$  (variance explained by fixed effects;  $R^2_m$ ) were calculated (package “MuMIn”; Barton, 2020) to estimate the variance explained by fixed effects (Nakagawa and Schielzeth, 2013). If variance explained was  $< 0.1$ , predictive effect was not considered to be ecologically significant. If  $R^2_m$  was  $< 0.3$  it was considered as a weak effect, for  $R^2_m < 0.5$  as a moderate effect and for  $R^2_m > 0.5$  as a strong effect (Nakagawa and Cuthill, 2007). A significant predictive effect of individual PUFAs of the lower trophic level for the higher trophic level is an indicator of transfer of the respective PUFA.

### Multivariate Analysis of Similarity

We used the five selected PUFAs for non-metric multidimensional scaling (nMDS) to ordinate PUFA composition among predator and prey in two dimensions using rank-order dissimilarities. All values were arcsine square-root transformed before ordination. Multivariate outliers were removed by the minimum volume ellipsoid-based robust distance (R package “mvoutlier” Filzmoser and Gschwandtner, 2018). To assess similarities in PUFA composition between spider types, and among predators and their food sources, we used analysis of similarity (ANOSIM, R package “vegan”; Oksanen et al., 2019) with 999 permutations. We used the ANOSIM global  $R$ -value of the pairwise comparisons as an

indicator of similarity. The value can range between  $-1$  to  $1$ , with global  $R$ -value close to  $1$  indicating the sample pairs being different, while values close to  $0$  indicate that the pair is similar. In greater detail, a global  $R$ -value of  $< 0.25$  indicates that groups are hardly separated,  $R < 0.5$  shows that groups differ but with some overlap, and  $R > 0.75$  implies groups are well separated (Jaschinski et al., 2011). Negative values can occur and indicate greater dissimilarity within a group than among groups (Chapman and Underwood, 1999).

### Food Source Reconstruction

The  $\delta^{13}\text{C}$  of riparian spiders were compared in a similar fashion as described above (factorial ANOVA) to see if spider type, season, and system influenced carbon isotope ratios. We used a two-source mixing model (aquatic/terrestrial insect) to calculate the proportion of carbon obtained from aquatic sources ( $P_{aq}$ ) in spider tissue. Carbon isotope ratios of aquatic and terrestrial insects were compared to see if food sources can be discriminated from each other. Average  $\delta^{13}\text{C}$  was calculated per river and season for both prey and predator groups. When food sources were distinct, the proportion of aquatic diet was calculated using the equation (modified from DeNiro and Epstein, 1978; Sanzone et al., 2003):

$$P_{aq} = \frac{\delta^{13}\text{C}_{pred} - \delta^{13}\text{C}_{ter} - \text{TEF}}{\delta^{13}\text{C}_{aq} - \delta^{13}\text{C}_{ter}} \quad (2)$$

where;  $\delta^{13}\text{C}_{pred}$  = natural abundance of  $\delta^{13}\text{C}$  of riparian spiders,  $\delta^{13}\text{C}_{ter}$  = natural abundance of  $\delta^{13}\text{C}$  of terrestrial insect reference samples, and  $\delta^{13}\text{C}_{aq}$  = natural abundance of  $\delta^{13}\text{C}$  of emergent aquatic insects. TEF is the average trophic enrichment factor between predator and prey (approximately  $1.1 \text{ ‰}$ ), similar to DeNiro and Epstein (1978), and similar to experimentally determined values for lycosid spiders (Oelbermann and Scheu, 2002).

We then included PUFA profiles in the food source reconstruction, as a combination of PUFA and carbon isotope data can provide more detailed information about the use of different prey groups by spiders at the different sites and seasons. Likely food sources were investigated using a Bayesian model (package “MixSiar”; Stock et al., 2018) combining the information about the diet from all measured parameters ( $\delta^{13}\text{C}$  and 5 PUFAs). For  $\delta^{13}\text{C}$ , we used the same TEF as described above (approximately  $1.1 \text{ ‰}$ , (DeNiro and Epstein, 1978). Metabolic effects are an important topic for PUFAs when trying to estimate food sources. Although it is generally assumed that predators largely reflect the PUFA signature of their prey, metabolic effects should be taken into account (Galloway and Budge, 2020). We used two approaches to verify that LC-PUFAs we found in riparian spiders derived from aquatic food sources, or if spiders were able to elongate shorter chain PUFAs into LC-PUFAs (some recent studies suggest that more species than previously thought are able to do this conversion or that LC-PUFAs might be produced in the soil food web (Kabeya et al., 2018; Menzel et al., 2018; Garrido et al., 2019; Kabeya et al., 2020): (1) a distance gradient and (2) an approach using CSIA. For the distance gradient, we used the samples collected from different shoreline

distances at Necker site N4 from June 2020 (see above). We compared samples from the different distances using a one-way ANOVA with *post hoc* pairwise comparisons of estimated marginal means when significant. To capture trends (decrease or increase with distance from shore), we also used a general additive model (GAM, package “mgcv”, Wood, 2017). For the second approach, we analyzed carbon isotope ratio for combined C18 fatty acids and combined C20 fatty acids of a small subsample of aquatic insects, terrestrial insects, web spiders and ground spiders (3 per group). Terrestrial insects only contained trace amounts of C20 fatty acids, so we used the carbon isotope ratio of C18 fatty acids as a baseline. This is a valid approximation, because carbon isotope ratios of C18 and C20 fatty acids in aquatic insects were very similar to each other (C18:  $-39.3 \text{ ‰}$ ; C20:  $-39.6 \text{ ‰}$ ).

We used the information from the distance gradient and CSIA to exclude PUFAs that might have been internally metabolized from the Bayesian model. Due to a lack of feeding experiments, a trophic enrichment of zero was used for the remaining PUFAs. To check if further assumptions of the mixing model were fulfilled, we checked if values of predators ( $-\text{TEF}$ ) lay within range of prey values using NMDS analysis. We used the Bayesian model to find dietary contribution of the different prey groups in the different systems and seasons. Average values per river and season were used for prey groups and the model was run separately for the two spider types with uninformative priors. River was set as a random effect and MCMC chain length was set to 300 000. Gelman-Rubin and Geweke diagnostics were applied to test model convergence.

## RESULTS

### PUFA Content in Riparian Spiders

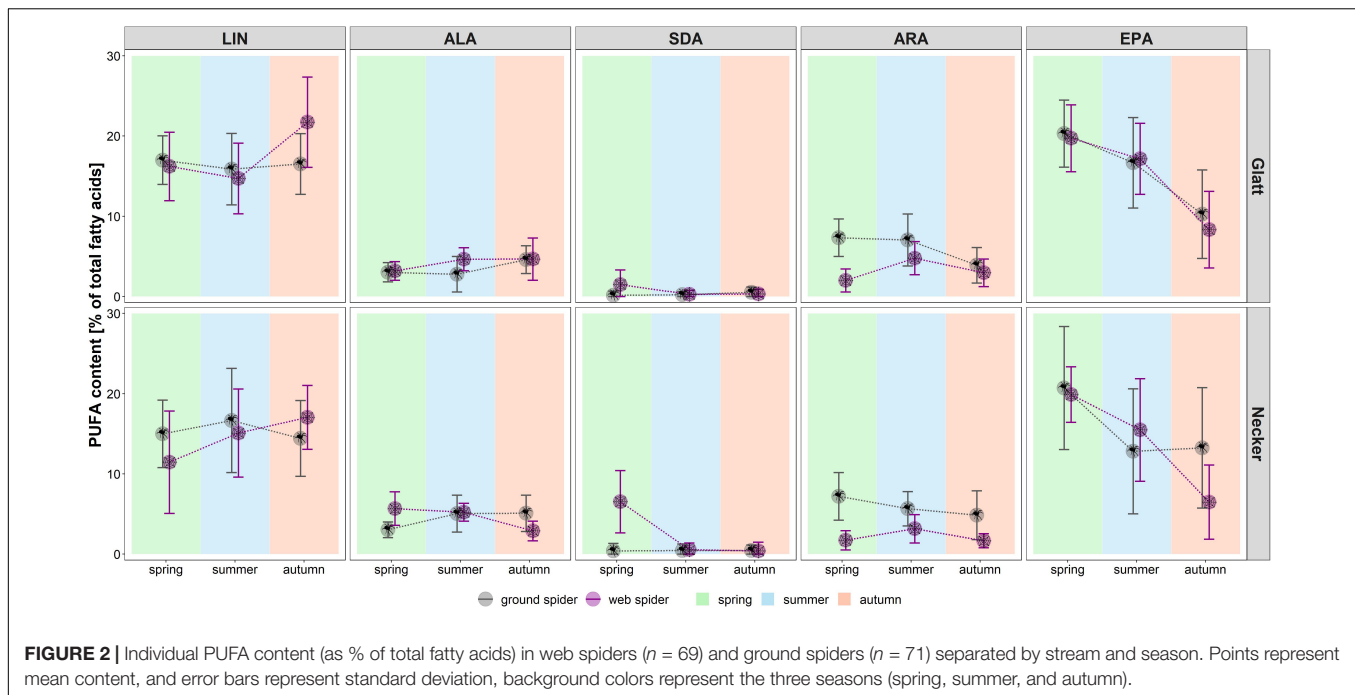
Polyunsaturated fatty acids comprised on average  $39.0 \pm 8.2 \%$  of total fatty acids in web spiders and  $41.8 \pm 8.4 \%$  in ground spiders. Riparian spiders were especially rich in  $\omega$ -3 PUFAs (Table 1). EPA made up the largest proportion with  $14.3 \pm 7.0 \%$  of total fatty acids in web spiders and  $15.6 \pm 7.4 \%$  in ground spiders (Figure 2 and Table 1). This was slightly lower than EPA content in aquatic insects ( $18.8 \pm 6.3 \%$ ), but higher than in the measured terrestrial insects ( $1.1 \pm 1.2 \%$ ). Levels of ALA and SDA were also close to those in emergent aquatic insects (Table 1; for PUFA content in spiders per dry mass see Supplementary Table 1). The ratio of  $\Sigma\omega3/\Sigma\omega6$  of riparian spiders was lower than in most emergent aquatic insects ( $3.9 \pm 4.6$ ), but on average close to 1 (web spiders: 1.34, ground spiders: 0.97), while measured terrestrial insects had  $\Sigma\omega3/\Sigma\omega6$  ratios of  $0.4 \pm 0.2$ .

Season, spider type, fluvial system and the interaction of the factors had different effects on individual PUFAs (Table 2). We found the most pronounced seasonal difference in EPA content with highest values in spring in both spider types. An opposite pattern, with significantly highest values in autumn, was visible for LIN content. For the other PUFAs, seasonal patterns were less strong and differed between spider types and fluvial systems (Figure 2 and Table 1). The strongest difference between spider types we found in ARA content, which was significantly higher in ground spiders than in web spiders. In contrast the SDA

**TABLE 1** | Carbon isotope ratios and individual PUFAs (% of total fatty acids) for the different trophic levels by stream and season (mean  $\pm$  standard deviation). N, Necker; G, Glatt.

	season	river	$\delta^{13}\text{C}$	$\delta^{13}\text{C}$	LIN	ALA	SDA	ARA	EPA	$\Sigma\omega 3/\Sigma\omega 6$	fatty acid		
			mean $\pm$ SD	n	mean $\pm$ SD	mean $\pm$ SD	mean $\pm$ SD	mean $\pm$ SD	mean $\pm$ SD	mean $\pm$ SD	mean $\pm$ SD	n	
periphyton	spring	G			5 $\pm$ 2.7	5.2 $\pm$ 2.4	2.7 $\pm$ 1.7	0.8 $\pm$ 0.9	13.7 $\pm$ 6	4.8 $\pm$ 2.7	10		
		N			8.2 $\pm$ 6.6	4.9 $\pm$ 1.3	10.8 $\pm$ 3.3	0 $\pm$ 0	4.1 $\pm$ 1.1	3.2 $\pm$ 1.3	9		
	summer	G			7.5 $\pm$ 2.9	4 $\pm$ 3.5	0.2 $\pm$ 0.6	0.2 $\pm$ 0.7	2.3 $\pm$ 2.8	0.9 $\pm$ 0.8	12		
		N			5.9 $\pm$ 1.3	4.5 $\pm$ 1.1	1.4 $\pm$ 1.5	1 $\pm$ 1.3	3.5 $\pm$ 2	1.4 $\pm$ 0.5	12		
	autumn	G			6 $\pm$ 2.5	4.8 $\pm$ 3.2	1.1 $\pm$ 1.2	1.2 $\pm$ 1.2	3.2 $\pm$ 2	1.3 $\pm$ 0.5	12		
		N			12.4 $\pm$ 4.6	3.6 $\pm$ 0.9	1.6 $\pm$ 1.3	0.1 $\pm$ 0.3	2.2 $\pm$ 1.5	0.8 $\pm$ 0.9	12		
Emergent aquatic insect	Diptera	spring	G	-30.4 $\pm$ 2.4	2	13.3 $\pm$ 4.8	6.1 $\pm$ 2.3	2.6 $\pm$ 2.9	0.8 $\pm$ 1.1	22.4 $\pm$ 5.4	2.6 $\pm$ 1.3	17	
			N	-33.8 $\pm$ 1.5	2	11.6 $\pm$ 8	6.6 $\pm$ 3.2	5.9 $\pm$ 3.7	0.6 $\pm$ 1	17.4 $\pm$ 6.6	3.6 $\pm$ 2.3	18	
		summer	G	-29.0 $\pm$ 1.5	9	21.5 $\pm$ 5.4	6.4 $\pm$ 4.3	0.9 $\pm$ 1.4	5.5 $\pm$ 1.7	19.3 $\pm$ 7.1	1.1 $\pm$ 0.5	14	
			N	-29.1 $\pm$ 0.6	4	17.8 $\pm$ 4.8	7.8 $\pm$ 1.9	0.9 $\pm$ 1.3	4.7 $\pm$ 2.6	23.5 $\pm$ 7.4	1.6 $\pm$ 0.8	11	
		autumn	G	-29.7 $\pm$ 2.3	7	23 $\pm$ 8.6	8.3 $\pm$ 6.4	0.8 $\pm$ 0.8	3.7 $\pm$ 2.1	21.2 $\pm$ 5.6	1.5 $\pm$ 1.2	13	
	N		-28.8 $\pm$ 0.4	5	22.8 $\pm$ 5.4	7.8 $\pm$ 1.9	1.2 $\pm$ 1.1	3.3 $\pm$ 2	19.2 $\pm$ 8.6	1.2 $\pm$ 0.5	12		
	Ephemeroptera	spring	G	-33.0 $\pm$ 1.5	4	3.5 $\pm$ 1.5	5.3 $\pm$ 2.8	2.9 $\pm$ 1.6	0.8 $\pm$ 1.1	14.5 $\pm$ 5.2	6.5 $\pm$ 3.7	11	
			N	-32.6 $\pm$ 0.3	2	3.6 $\pm$ 2.7	4.8 $\pm$ 2	6.1 $\pm$ 2.9	1.5 $\pm$ 3.4	13.9 $\pm$ 7.6	8 $\pm$ 4.3	10	
		summer	G	-33.3 $\pm$ 2.0	7	4 $\pm$ 1.3	11.2 $\pm$ 6.7	2.8 $\pm$ 1.3	1.5 $\pm$ 1	17 $\pm$ 5.8	6.6 $\pm$ 3.8	17	
			N	-33.8 $\pm$ 1.5	7	3.5 $\pm$ 1.2	8 $\pm$ 3.8	4 $\pm$ 2.5	1.1 $\pm$ 0.6	19.3 $\pm$ 5.7	7.2 $\pm$ 1.9	17	
		autumn	G	-34.2 $\pm$ 0.5	5	3.7 $\pm$ 1.4	11 $\pm$ 5.8	2.1 $\pm$ 0.9	0.9 $\pm$ 0.5	21.5 $\pm$ 6.8	7.8 $\pm$ 2.7	11	
			N	-34.1 $\pm$ 0.7	3	13 $\pm$ 32.6	4.8 $\pm$ 3.7	2.9 $\pm$ 1.4	0.6 $\pm$ 0.6	19.8 $\pm$ 9.3	10.6 $\pm$ 5.7	9	
		Plecoptera	spring	G	-35.5 $\pm$ 1.5	2	13.9 $\pm$ 10.8	14.9 $\pm$ 9.7	1.1 $\pm$ 1.5	2.9 $\pm$ 2.5	17.2 $\pm$ 9.7	2.8 $\pm$ 1.9	9
				N	-31.3 $\pm$ 0.4	4	8 $\pm$ 4.1	12.1 $\pm$ 2.4	7.5 $\pm$ 4.4	2 $\pm$ 0.8	18.3 $\pm$ 3.2	4.5 $\pm$ 2	20
			summer	G	-28.3 $\pm$ 1.0	3	15.1 $\pm$ 3.3	8.6 $\pm$ 1.7	0.7 $\pm$ 0.7	7.6 $\pm$ 2.3	18.5 $\pm$ 2.7	1.3 $\pm$ 0.3	10
				N	-28.8 $\pm$ 0.3	3	14.8 $\pm$ 5.2	8.7 $\pm$ 2.1	1 $\pm$ 0.9	6.9 $\pm$ 2.1	19.9 $\pm$ 5.5	1.5 $\pm$ 0.6	12
	autumn		G	-28.3 $\pm$ 0.9	4	14.6 $\pm$ 3.3	7 $\pm$ 2	0.6 $\pm$ 0.5	6.7 $\pm$ 1.3	16.3 $\pm$ 3.5	1.2 $\pm$ 0.3	13	
			N	-27.7 $\pm$ 0.9	4	17 $\pm$ 4.8	10.4 $\pm$ 3.6	0.9 $\pm$ 1	5.4 $\pm$ 1.6	17.4 $\pm$ 5	1.3 $\pm$ 0.4	10	
	Terrestrial insect	spring		-27.9 $\pm$ 1.0	4	14.6 $\pm$ 3.4	7 $\pm$ 4.9	0 $\pm$ 0	0.3 $\pm$ 0.1	0.5 $\pm$ 0.2	0.5 $\pm$ 0.2	3	
		summer		-28.4 $\pm$ 0.4	4	13 $\pm$ 4.3	5 $\pm$ 0.6	0 $\pm$ 0	1.1 $\pm$ 1.1	2.2 $\pm$ 1.9	0.5 $\pm$ 0.2	3	
autumn			-29.1 $\pm$ 0.3	4	8.8 $\pm$ 1	1.7 $\pm$ 0.2	0 $\pm$ 0	0.5 $\pm$ 0.3	0.7 $\pm$ 0.2	0.3 $\pm$ 0	3		
Riparian predator	ground spider	spring	G	-27.8 $\pm$ 0.5	13	17 $\pm$ 3	3 $\pm$ 1.2	0.1 $\pm$ 0.5	7.3 $\pm$ 2.3	20.3 $\pm$ 4.2	1 $\pm$ 0.2	12	
			N	-27.4 $\pm$ 0.5	12	15 $\pm$ 4.2	3 $\pm$ 1	0.4 $\pm$ 0.9	7.2 $\pm$ 3	20.7 $\pm$ 7.7	1.1 $\pm$ 0.4	11	
		summer	G	-28.1 $\pm$ 0.6	15	15.9 $\pm$ 4.4	2.8 $\pm$ 2.2	0.2 $\pm$ 0.4	7.1 $\pm$ 3.2	16.7 $\pm$ 5.6	0.9 $\pm$ 0.3	12	
			N	-28.0 $\pm$ 0.8	12	16.7 $\pm$ 6.5	5.1 $\pm$ 2.3	0.4 $\pm$ 0.8	5.7 $\pm$ 2.1	12.8 $\pm$ 7.8	1 $\pm$ 0.7	12	
		autumn	G	-28.5 $\pm$ 0.6	8	16.5 $\pm$ 3.8	4.6 $\pm$ 1.7	0.5 $\pm$ 0.7	3.9 $\pm$ 2.2	10.3 $\pm$ 5.5	0.8 $\pm$ 0.4	12	
			N	-27.7 $\pm$ 0.4	12	14.4 $\pm$ 4.7	5.1 $\pm$ 2.3	0.4 $\pm$ 0.7	4.8 $\pm$ 3	13.2 $\pm$ 7.5	1 $\pm$ 0.5	12	
	web spider	spring	G	-28.7 $\pm$ 1.2	12	16.2 $\pm$ 4.3	3.2 $\pm$ 1.2	1.5 $\pm$ 1.8	2 $\pm$ 1.4	19.7 $\pm$ 4.2	1.5 $\pm$ 0.6	12	
			N	-28.7 $\pm$ 0.5	7	11.5 $\pm$ 6.4	5.7 $\pm$ 2.1	6.5 $\pm$ 3.9	1.7 $\pm$ 1.2	19.9 $\pm$ 3.5	3.2 $\pm$ 2.7	9	
		summer	G	-28.7 $\pm$ 1.3	11	14.7 $\pm$ 4.4	4.6 $\pm$ 1.4	0.3 $\pm$ 0.5	4.8 $\pm$ 2.1	17.2 $\pm$ 4.4	1.2 $\pm$ 0.5	12	
			N	-28.0 $\pm$ 0.8	11	15.1 $\pm$ 5.5	5.2 $\pm$ 1.1	0.5 $\pm$ 0.8	3.2 $\pm$ 1.8	15.5 $\pm$ 6.4	1.4 $\pm$ 0.8	12	
		autumn	G	-28.3 $\pm$ 1.0	10	21.7 $\pm$ 5.6	4.7 $\pm$ 2.6	0.3 $\pm$ 0.6	3 $\pm$ 1.7	8.3 $\pm$ 4.8	0.6 $\pm$ 0.3	12	
			N	-28.0 $\pm$ 0.8	10	17 $\pm$ 4	2.9 $\pm$ 1.2	0.4 $\pm$ 1.1	1.7 $\pm$ 0.9	6.5 $\pm$ 4.6	0.6 $\pm$ 0.6	12	





content was significantly higher in web spiders than in ground spiders, but only in spring. The differences in LIN and ALA between spider types were specific to season and fluvial system. For EPA, we found no significant difference between spider types. Between the two systems the only overall significant difference was a slightly higher LIN content in riparian spiders at the Glatt. In spring, we found a higher SDA content and  $\Sigma\omega3/\Sigma\omega6$  ratio in web spiders than ground spiders at the Glatt than at the Necker (Table 2).

### PUFA Transfer Across Trophic Levels

Individual PUFA content in periphyton and emergent aquatic insects showed site and season specific differences (see Supplementary Figure 1). Therefore, a different PUFA pool was available for riparian spiders at different sites and seasons. EPA generally made up the largest proportion of Polyunsaturated fatty acids in both periphyton and emergent aquatic insects.

The mixed effects model indicated average ALA content in periphyton was a moderate predictor for ALA content in aquatic Diptera ( $R^2m = 0.31$ ,  $p < 0.05$ ) (Figure 3A). Model results showed SDA content in periphyton was a strong predictor for SDA content in aquatic Diptera ( $R^2m = 0.51$ ,  $p < 0.001$ ) and Plecoptera ( $R^2m = 0.53$ ,  $p < 0.05$ ). LIN content in Diptera ( $R^2m = 0.22$ ,  $p = 0.05$ ) and ALA content in Ephemeroptera ( $R^2m = 0.15$ ,  $p > 0.05$ ) were weak predictors for the respective PUFAs in riparian web spiders. Average SDA and ARA in emergent aquatic insects of all orders were a predictor for SDA (Diptera:  $R^2m = 0.47$ ,  $p = 0.01$ ; Ephemeroptera:  $R^2m = 0.1$ ,  $p = 0.08$ ); Plecoptera:  $R^2m = 0.57$ ,  $p < 0.001$ ) and ARA (Diptera:  $R^2m = 0.49$ ,  $p < 0.05$ ; Ephemeroptera:  $R^2m = 0.19$ ,  $p < 0.05$ ; Plecoptera:  $R^2m = 0.20$ ,  $p > 0.05$ ) content in web spiders (Figure 3B). For the other PUFAs, the variance explained by the

lower trophic level was close to zero ( $R^2m < 0.1$ ,  $p > 0.05$ ). Individual PUFAs of emergent aquatic insect had low predictive power for PUFAs in ground spiders ( $R^2m < 0.1$ ,  $p > 0.05$ ) (Figure 3B). There was only a weak predictive effect of ALA in Diptera ( $R^2m = 0.17$ ,  $p < 0.05$ ) and ARA in Ephemeroptera ( $R^2m = 0.10$ ,  $p = 0.055$ ).

### Multivariate Analysis of Similarity

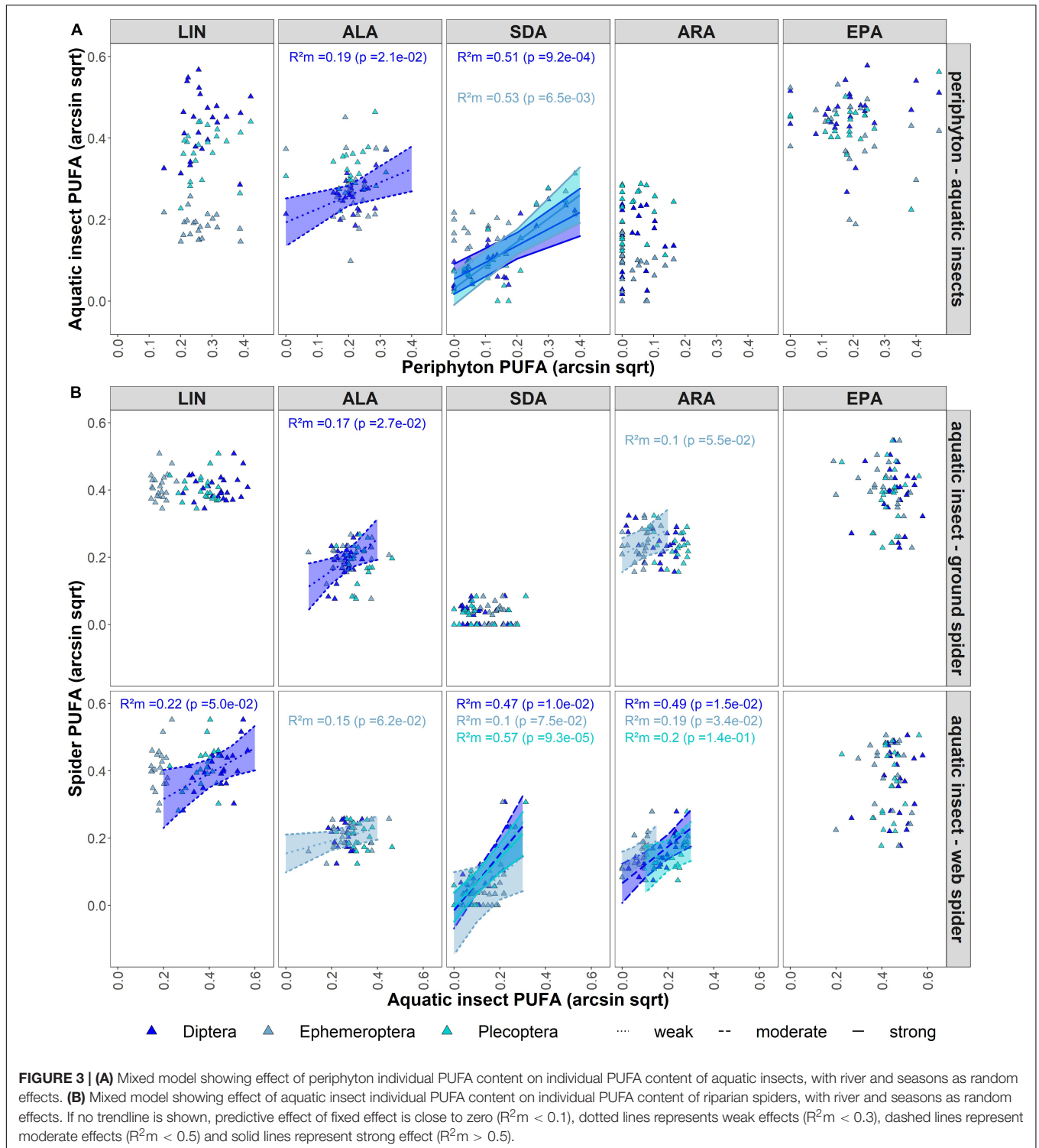
Multivariate comparisons of similarity revealed seasonal differences in PUFA profiles for both spider types. Web spiders in spring were clearly separated from those in summer and autumn (seasonal effect: ANOSIM:  $R = 0.31$ ,  $p = 0.001$ ) (Figure 4A), and the difference was more pronounced at the Necker. Ground spiders also showed some, albeit less pronounced, seasonal differences (ANOSIM:  $R = 0.15$ ,  $p = 0.001$ ) (Figure 4A). PUFA profiles of web spiders and ground spiders differed in spring ( $R = 0.46$ ,  $p = 0.001$ ), and the difference was more pronounced at the Necker ( $R = 0.60$ ,  $p = 0.001$ ) than the Glatt ( $R = 0.36$ ,  $p = 0.001$ ). In contrast, the two spider types had similar PUFA profiles in summer ( $R = 0.04$ ,  $p = 0.051$ ) and autumn ( $R = 0.12$ ,  $p = 0.004$ ) in both rivers (Figure 4B and Table 3). Lastly, web spiders showed some differentiation between streams in spring ( $R = 0.21$ ,  $p = 0.015$ ).

Web spider PUFA profiles were most similar to those of emergent aquatic insects, especially Diptera (ANOSIM spring:  $R = 0.07$ ,  $p = 0.085$ , summer:  $R = 0.14$ ,  $p = 0.001$ ) and Plecoptera at both rivers in spring and summer, but were well separated from terrestrial reference samples (ANOSIM spring:  $R = 0.94$ ,  $p = 0.001$ , summer:  $R = 0.77$ ,  $p = 0.001$ ) (Figure 5 and Table 3). In autumn, web spiders were more separate from all emergent aquatic insect groups (Diptera: ANOSIM  $R = 0.46$ ,  $p = 0.001$ ; Plecoptera: ANOSIM  $R = 0.53$ ,  $p = 0.001$ ; Ephemeroptera:

**TABLE 2 |** Factorial ANOVA of PUFA content in riparian spiders (factors: spider type = type, season, fluvial system = river) and significant *post hoc* comparisons (web, web spider; ground, ground spider; N, Necker; G, Glatt).

	Factor	Df	F-value	Pr(>F)	contrast	season	type	river	t.ratio	p
LIN	type	1	0.54	0.465						
	season	1	7.48	0.007**	spring-autumn				-2.6	0.0270
	river	2	3.17	0.045*	G - N				2.7	0.0071
	type:season	1	1.65	0.202						
	type:river	2	2.52	0.084						
	season:river	2	2.64	0.075						
	type:season:river	2	0.44	0.648						
ALA	type	1	4.65	0.033*						
	season	2	4.23	0.017*						
	river	1	5.85	0.017*						
	type:season	2	3.92	0.022*						
	type:river	1	1.23	0.269						
	season:river	2	4.45	0.014*						
	type:season:river	2	4.48	0.013*	summer - autumn		ground	G	-3.4	0.003
					spring - autumn		web	N	2.9	0.018
					summer - autumn		web	N	2.8	0.018
					ground - web	summer		G	-3.5	0.0006
					ground - web	spring		N	-2.6	0.010
					ground - web	autumn		N	2.5	0.012
					G - N	spring	web		-2.7	0.007
				G - N	summer	ground		-3.5	0.0005	
SDA	type	1	1.50	0.223						
	season	2	0.70	0.5						
	river	1	7.90	0.006**						
	type:season	2	3.61	0.03*						
	type:river	1	5.70	0.018*						
	season:river	2	6.52	0.002**						
	type:season:river	2	4.02	0.02*	spring - summer		web	N	7.1	2.7e-10
					spring - autumn		web	N	7.7	9.6e-12
				ground - web	spring		G	-2.9	0.005	
				ground - web	spring		N	-7.5	1.03e-11	
				G - N	spring	web		-5.5	1.7e-07	
ARA	type	1	28.81	3.62e-7***						
	season	2	7.20	0.001**						
	river	1	3.04	0.083						
	type:season	2	6.76	0.002***	ground - web	spring			8.2	2.5e-13
					ground - web	summer			3.4	8.1e-04
					ground - web	autumn			3.6	4.6e-04
					spring-autumn		ground		3.9	0.0005
					summer-autumn		ground		2.8	0.015
					spring-summer		web		-3.9	0.0005
					summer-autumn		web		3.0	0.0010
	type:river	1	1.98	0.162						
	season:river	2	1.06	0.35						
	type:season:river	2	0.80	0.453						
EPA	type	1	0.26	0.608						
	season	2	19.19	5.15e-8***	spring-summer				3.4	2.2e-03
					spring-autumn				8.1	1.2e-12
					summer-autumn				4.8	1.4e-05
	river	1	1.04	0.309						
	type:season	2	0.36	0.695						
	type:river	1	0.08	0.776						
	season:river	2	1.45	0.239						
type:season:river	2	1.60	0.205							
Σ ω3/Σ ω6 ratio	type	1	1.53	0.218						
	season	2	6.53	0.002**						
	river	1	6.03	0.015*						
	type:season	2	2.12	0.124						
	type:river	1	0.98	0.325						
	season:river	2	3.00	0.053						
	type:season:river	2	3.40	0.036*	spring - autumn		web	G	3.8	0.0006
					summer - autumn		web	G	3.0	0.009
					spring - summer		web	N	4.6	2.7e-05
					spring - autumn		web	N	7.8	5.6e-12
					summer - autumn		web	N	3.4	0.002
					ground - web	spring		N	-5.1	1.4e-06
					ground - web	autumn		N	2.4	0.017
				G - N	spring	web		-4.0	9.3e-05	

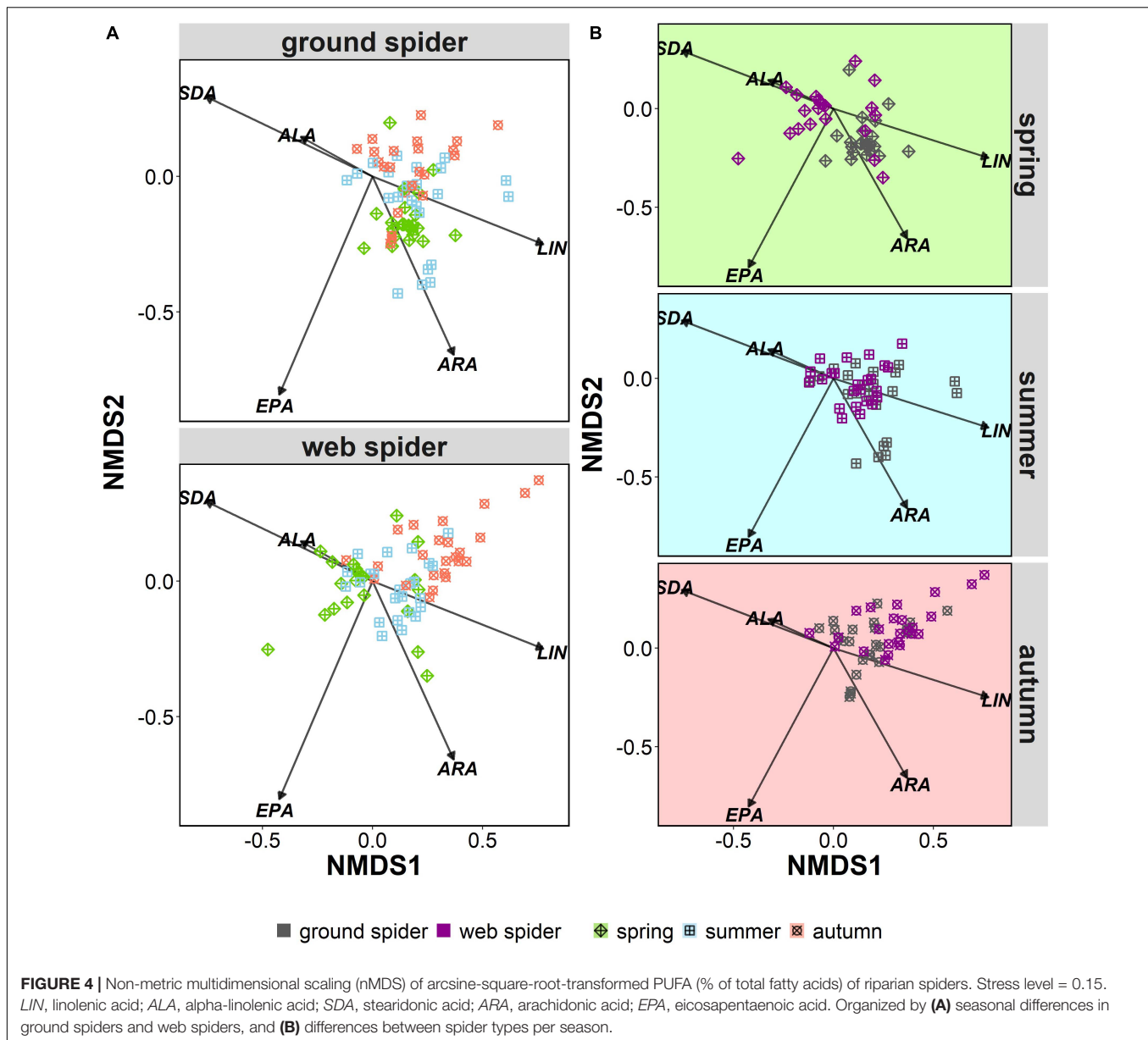
\**p* < 0.05, \*\**p* < 0.01, \*\*\**p* < 0.001.



ANOSIM  $R = 0.87$ ,  $p = 0.001$ ) but still distinct from terrestrial insect reference samples (ANOSIM  $R = 0.72$ ,  $p = 0.001$ ).

Ground spiders were more separated from emergent aquatic insects in spring than web spiders (Figure 5 and Table 3). Ground spiders showed some overlap to aquatic Diptera (ANOSIM  $R = 0.59$ ,  $p = 0.001$ ) but were well separated from Plecoptera

(ANOSIM  $R = 0.75$ ,  $p = 0.001$ ) in spring; the overlap with Plecoptera was larger at the Glatt than Necker (Figure 5 and Table 3). In summer, ground spiders were similar to aquatic Diptera (ANOSIM  $R = 0.14$ ,  $p = 0.001$ ) and Plecoptera (ANOSIM  $R = 0.25$ ,  $p = 0.001$ ). In autumn, ground spiders were most similar to Plecoptera (ANOSIM  $R = 0.23$ ,  $p = 0.001$ ) and showed



some overlap with Diptera (ANOSIM  $R = 0.35$ ,  $p = 0.001$ ). Ground spider PUFA profiles were separated from those of Ephemeroptera and terrestrial reference samples during all seasons (Figure 5 and Table 3).

### Food Source Reconstruction Food Web Analysis Using $\delta^{13}\text{C}$

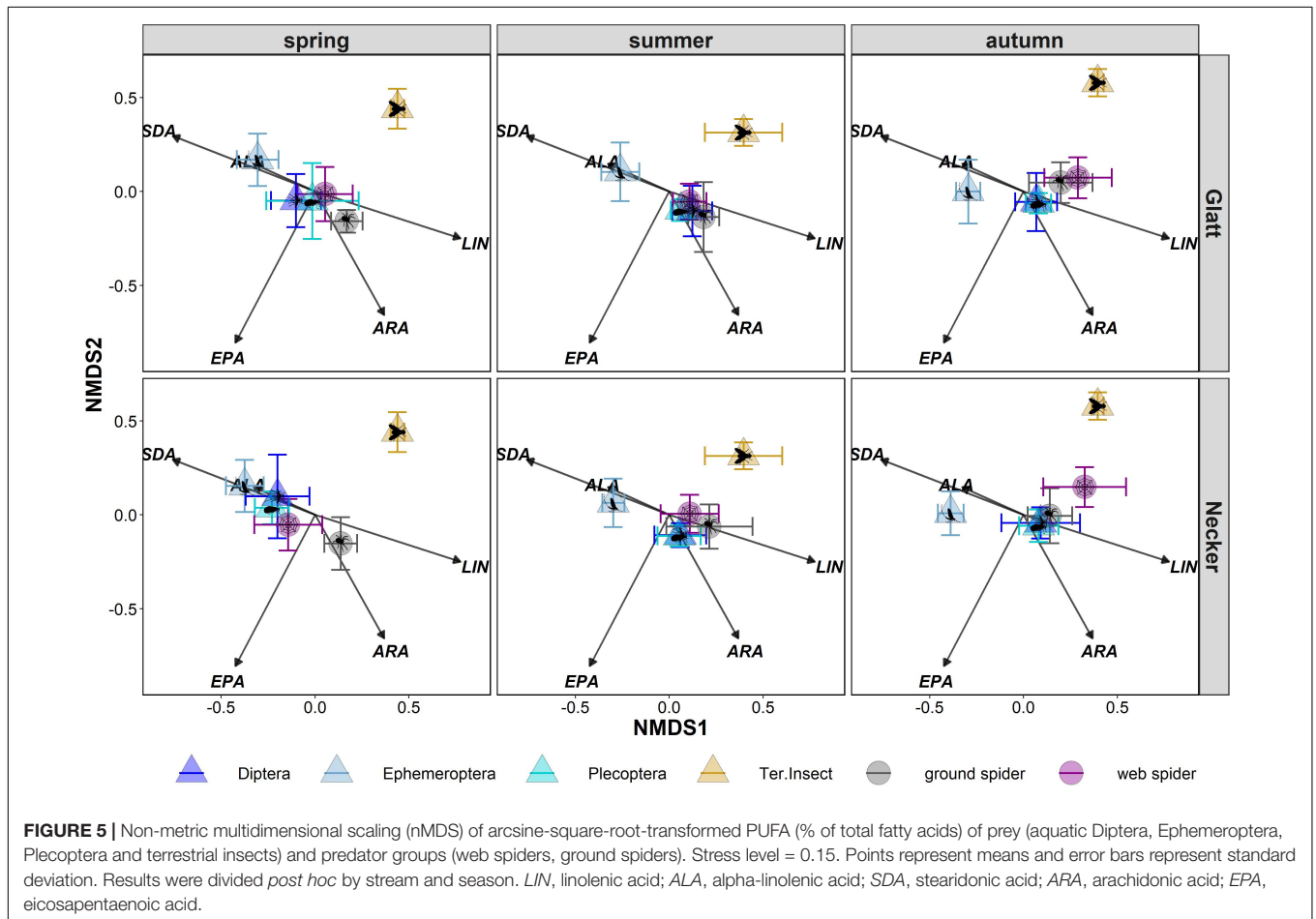
Riparian spiders had average  $\delta^{13}\text{C}$  ratios of  $-27.9 \pm 0.6\text{‰}$  in ground spiders and  $-28.4 \pm 1.0\text{‰}$  in web spiders. We found a significant main effect of river (ANOVA,  $F = 5.56$ ,  $p = 0.02$ ) and a close to significant interaction effect of season and spider type ( $F = 2.90$ ,  $p = 0.056$ ) on  $\delta^{13}\text{C}$  ratios. In spring, the  $\delta^{13}\text{C}$  ratio of web spiders ( $-28.7 \pm 0.9\text{‰}$ ) was significantly more depleted than ground spiders ( $-27.6 \pm 0.5\text{‰}$ ) (t.ratio = 5.17,  $p < 0.001$ ). In summer and autumn, web spiders and ground spiders displayed

similar  $\delta^{13}\text{C}$  isotope ratios (web spider: summer  $-28.4 \pm 1.1\text{‰}$ , autumn  $-28.1 \pm 0.9\text{‰}$ ; ground spider: summer:  $-28.0 \pm 0.6\text{‰}$ , autumn:  $-28.02 \pm 0.7\text{‰}$ ,  $p > 0.05$ ). There was no significant difference in  $\delta^{13}\text{C}$  ratio among seasons for either spider type ( $p > 0.05$ ). However, spiders were more depleted at the Glatt than at the Necker ( $p < 0.05$ ).

In spring, the  $\delta^{13}\text{C}$  ratio of web spiders ( $-28.7 \pm 0.9\text{‰}$ ) was between that of aquatic ( $-32.5 \pm 1.7\text{‰}$ ) and terrestrial ( $-27.9 \pm 1.0\text{‰}$ ) insects, indicating that web spiders consumed a mixture of aquatic and terrestrial food sources (Figure 6). In contrast, ground spider  $\delta^{13}\text{C}$  ratios ( $-27.6 \pm 0.5\text{‰}$ ) were similar to terrestrial insects, inferring a mostly terrestrial source in the diet. The  $\delta^{13}\text{C}$  ratio of all groups of emergent aquatic insects were distinct from terrestrial insects in spring (t.ratio = 2.1,  $p < 0.001$ ) but not in summer and autumn

**TABLE 3 |** Pairwise Similarity (ANOSIM) of PUFA profiles of prey and predator groups at each of the systems (Necker, Glatt) and overall (both rivers).

	season	river	ground spider		Diptera		Plecoptera		Ephemeroptera		terrestrial insect	
			R	p	R	p	R	p	R	p	R	p
web spider	spring	Glatt	0.36	0.001	0.15	0.024	0.34	0.001	0.70	0.001	1.00	0.001
		Necker	0.60	0.001	–	0.604	0.48	0.001	0.52	0.001	0.95	0.010
		overall	0.46	0.001	0.07	0.085	0.34	0.001	0.56	0.001	0.94	0.001
	summer	Glatt	0.04	0.179	0.09	0.058	0.38	0.001	0.76	0.001	0.90	0.002
		Necker	0.02	0.316	0.18	0.022	0.28	0.002	0.73	0.001	0.60	0.001
		overall	0.04	0.051	0.14	0.001	0.31	0.001	0.74	0.001	0.77	0.001
	autumn	Glatt	0.05	0.153	0.34	0.001	0.51	0.001	0.87	0.001	0.87	0.002
		Necker	0.23	0.004	0.55	0.001	0.64	0.001	0.90	0.001	0.61	0.008
		overall	0.12	0.004	0.46	0.001	0.53	0.001	0.87	0.001	0.72	0.001
ground spider	spring	Glatt			0.64	0.001	0.54	0.001	0.96	0.001	1.000	0.007
		Necker			0.63	0.001	0.95	0.001	0.96	0.001	0.97	0.002
		overall			0.59	0.001	0.75	0.001	0.96	0.001	0.99	0.001
	summer	Glatt			0.14	0.012	0.27	0.001	0.85	0.001	0.75	0.005
		Necker			0.15	0.022	0.20	0.004	0.75	0.001	0.47	0.025
		overall			0.14	0.002	0.25	0.001	0.78	0.001	0.60	0.001
	autumn	Glatt			0.31	0.001	0.22	0.001	0.84	0.001	0.90	0.001
		Necker			0.35	0.001	0.24	0.011	0.92	0.001	0.99	0.003
		overall			0.35	0.001	0.23	0.001	0.86	0.001	0.94	0.001





(Diptera and Plecoptera overlapped with terrestrial insects); thus the proportion of aquatic-derived carbon in spiders was only calculated in spring. Based on mixing model results (Equation 2), web spiders obtained on average 38% aquatic-derived carbon at the Glatt and 44% at the Necker in spring. In contrast, ground spiders obtained on average 19% of aquatic-derived carbon at the Glatt and 13% at the Necker. The difference in proportion of carbon obtained from aquatic sources in spring was more pronounced between spider types at the Necker.

### Including PUFAs in Food Source Reconstruction

The  $\delta^{13}\text{C}$  ratio and PUFA profiles of spiders changed with distance from the shore. The  $\delta^{13}\text{C}$  ratio of spiders had a more aquatic signature close to the shoreline (0–2 m) than 40–50 m away from the shore (Table 4 and Figure 7A). The correlation between distance and  $\delta^{13}\text{C}$  ratio was significant for ground spiders (GAM  $p = 0.007$ ) with a trend to less depleted values further from the shoreline, also the direct comparison between 0–2 m and 40–50 m showed a difference that was close to significance ( $p = 0.052$ ). A multivariate comparison of similarities showed that PUFA profiles of spiders sampled 0–2 m from shore were separated from those spiders sampled further away from shore (ground spiders: ANOSIM  $R = 0.99$ ,  $p = 0.008$ ; web spiders: ANOSIM  $R = 0.62$ ,  $p = 0.012$ ). We found higher EPA and SDA content close to shore and decreasing values with distance (Table 4), the difference between 0–2 m and 40–50 m being significant for both spider types for SDA ( $p < 0.05$ ) but not EPA ( $p > 0.05$ ) (Figure 7A). The GAM trend line also showed decreasing content with distance, but the correlation was not significant ( $p > 0.05$ ) (Figure 7A). A decrease in ALA content with distance from shore was evident for ground spiders (GAM  $p < 0.05$ ), but not web spiders (GAM  $p > 0.05$ ) (Table 4 and Figure 7A). Both LIN and ARA increased with distance from shore (LIN: both spider types GAM  $p < 0.05$ ; ARA: ground spiders GAM  $p < 0.05$ ). LIN in both spider types increased from ~10% (0–2 m) to nearly 25% of total fatty acids at 40–50 m distance from shore (Figure 7A and Table 4). The  $\Sigma\omega3/\Sigma\omega6$  ratio differed between 0–2 m (web spider:  $1.3 \pm 0.6$ , ground spider:  $1.7 \pm 0.4$ ) and 40–50 m (web spider:  $0.7 \pm 0.1$ ,  $p = 0.069$ ; ground spider:  $0.3 \pm 0.1$ ,  $p = 0.002$ ), although this difference was significant only for ground spiders.

The compound-specific  $\delta^{13}\text{C}$  ratio of C18 fatty acids was less depleted in terrestrial insects (mean  $\delta^{13}\text{C} = -34.8 \pm 0.9\text{‰}$ ) than in aquatic insects ( $\delta^{13}\text{C} = -39.3 \pm 3.5\text{‰}$ ) (Figure 7B). The  $\delta^{13}\text{C}$  ratios of C18 fatty acids of aquatic and terrestrial insects were used as baselines for comparison with spider  $\delta^{13}\text{C}$  ratio. Like the bulk isotope ratio, C18  $\delta^{13}\text{C}$  ratio of spiders was between aquatic and terrestrial insects with ground spiders ( $\delta^{13}\text{C} = -35.1\text{‰}$ ) being close to terrestrial insects. In contrast, spider  $\delta^{13}\text{C}$  ratios of C20 s were close to the aquatic baseline (web spider:  $-38.6\text{‰}$ , ground spider:  $-38.1\text{‰}$ ). The main part of C20 fatty acids consisted of EPA (web spiders: 80–90%, ground spiders: 50–90%) and the rest was ARA. The sample containing the most ARA was least depleted (Supplementary Tables 2, 3). This indicates  $\delta^{13}\text{C}$  of EPA in spiders was similar to  $\delta^{13}\text{C}$  ratio of fatty acids in aquatic insects, while ARA might have a more terrestrial  $\delta^{13}\text{C}$  signature. This is in accordance with the results from the distance gradient

were ARA was increasing with distance from shore while EPA was decreasing. We found no indication for internal metabolism of EPA or acquisition through terrestrial sources, EPA was therefore used for the food source reconstruction.

Based on the results above, we used LIN, ALA, SDA, and EPA as tracers for food source reconstruction. ARA was excluded for ground spiders because of potential internal production or an unknown diet source. Model output using combination of the remaining PUFAs and  $\delta^{13}\text{C}$  indicated a mixed diet, consisting of terrestrial and aquatic insects for both types of riparian spiders (Figure 8). Results are presented as median and 95% credibility interval.

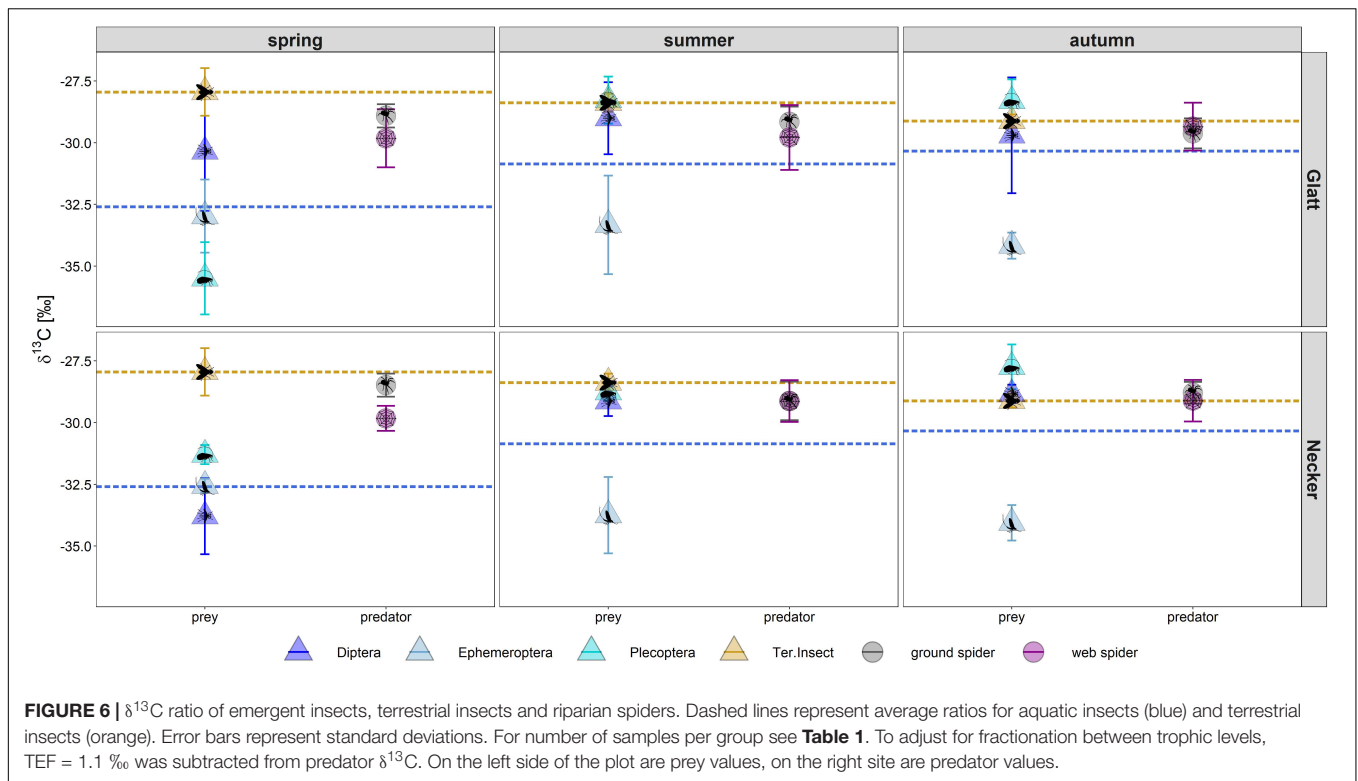
For web spiders, the model revealed that the diet in spring was dominated by terrestrial insects (Glatt: 45 (31–57)%, Necker: 43 (34–52)%), aquatic Diptera (Glatt: 35 (11–63)%, Necker: 17 (0–26)%) and Plecoptera (Glatt: 16 (0–31)%, Necker: 34 (9–59)%). In summer, the proportion of terrestrial insects and Diptera was lower than in spring at the Glatt (terrestrial insects: 35 (17–54)%, Diptera: 25 (4–51)%) while Plecoptera increased (33 (8–59)%). At the Necker, the proportion of terrestrial insects remained similar as in spring (44 (28–61)%), whereas the contribution of Diptera increased (31 (8–58)%) while Plecoptera decreased (19 (0–43)%). In autumn, terrestrial insects comprised the largest proportion of web spider diet at both rivers (Glatt: 51 (39–62)%, Necker: 69 (59–77)%) followed by Plecoptera (Glatt: 30 (10–51)%, Necker: 9 (0–24)%) and Diptera (Glatt: 18 (0–31)%, Necker: 20 (4–33)%).

For ground spiders, the diet in spring was dominated by terrestrial insects (Glatt: 79 (56–91)%, Necker: 86 (70–94)%). Terrestrial insect contribution was lower at both rivers in summer (Glatt: 49 (11–81)%, Necker: 53 (30–70)%) and autumn (Glatt: 45 (33–57)%, Necker: 47 (35–58)%). In summer, Plecoptera (Glatt: 25 (1–76)%, Necker: 12 (0–43)%) and Diptera (Glatt: 18 (0–37)%, Necker: 28 (3–57)%) made up the largest proportion of aquatic prey. In autumn, Plecoptera were the most important aquatic dietary contribution for ground spiders at both rivers (Glatt: 31 (12–48)%, Necker: 31 (18–46)%). Ephemeroptera were estimated to contribute only small proportions (<10%) to spider diets.

## DISCUSSION

### PUFA Transfer

We show here that PUFAs are transferred across ecosystem boundaries, from streams to adjacent terrestrial habitats, via emergent aquatic insects and that these PUFAs are partially incorporated into riparian spider tissues. Riparian spiders had an unusually high EPA content and thus high  $\Sigma\omega3/\Sigma\omega6$  ratio for terrestrial consumers. On average, EPA represented 15 % of total fatty acids in riparian spiders (ca. 10 mg/g dry mass). High EPA content in riparian spiders was also reported by other studies (Fritz et al., 2017; Ramberg et al., 2020), although our results show even higher EPA content than e.g., the 2–3 mg/g dry mass found by Ramberg et al. (2020). The  $\Sigma\omega3/\Sigma\omega6$  ratio is often employed to distinguish autochthonous versus allochthonous food sources in aquatic food webs and to assess the relative consumption of aquatic versus terrestrial material by consumers. A ratio  $> 1$  is thought to indicate that dietary energy was acquired mainly



**TABLE 4** |  $\delta^{13}\text{C}$ , individual PUFA content (% of total fatty acids) and  $\Sigma\omega3/\Sigma\omega6$  ratio (mean  $\pm$  standard deviation) in spiders at different distances from shore (site N4).

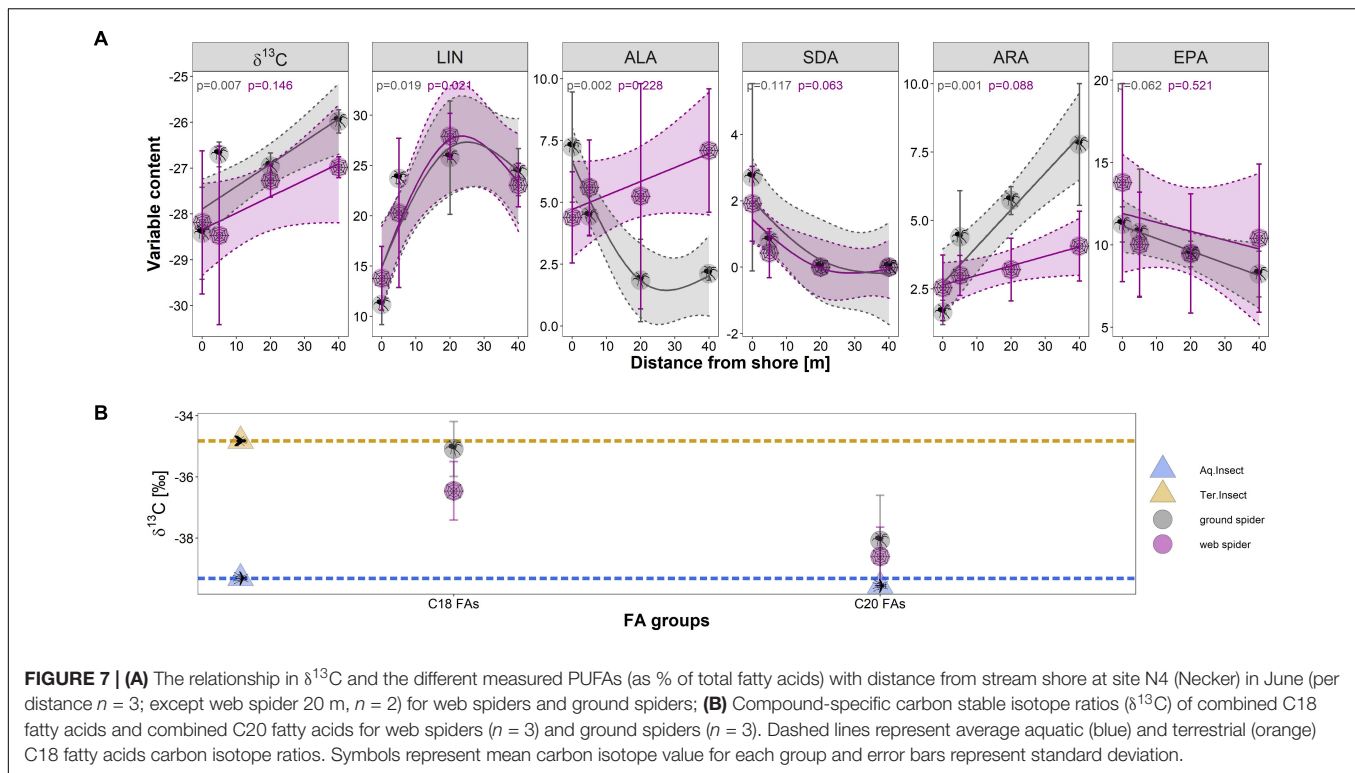
	distance	$\delta^{13}\text{C}$	LIN	ALA	SDA	ARA	EPA	$\Sigma\omega3/\Sigma\omega6$	n
ground spider	0-2m	$-28.4 \pm 1.0$	$11.2 \pm 2.0$	$7.2 \pm 2.2$	$2.7 \pm 2.8$	$1.6 \pm 0.4$	$11.2 \pm 1.1$	$1.7 \pm 0.4$	3
	5-10m	$-26.7 \pm 0.3$	$23.7 \pm 0.5$	$4.4 \pm 0.8$	$0.8 \pm 0.3$	$4.4 \pm 1.7$	$10.8 \pm 3.9$	$0.6 \pm 2$	3
	20-30m	$-27.0 \pm 0.3$	$25.8 \pm 5.6$	$1.8 \pm 1.7$	$0.0 \pm 0.0$	$5.7 \pm 0.5$	$9.5 \pm 0.8$	$0.4 \pm 1$	3
	40-50m	$-26.0 \pm 0.3$	$24.3 \pm 2.3$	$2.1 \pm 0.3$	$0.0 \pm 0.0$	$7.8 \pm 2.2$	$8.2 \pm 1.4$	$0.3 \pm 0.3$	3
web spider	0-2m	$-28.2 \pm 1.6$	$13.8 \pm 3.2$	$4.4 \pm 1.8$	$1.9 \pm 1.1$	$2.5 \pm 1.2$	$13.8 \pm 6.0$	$1.3 \pm 0.6$	3
	5-10m	$-28.5 \pm 1.9$	$20.3 \pm 7.4$	$5.6 \pm 1.9$	$0.4 \pm 0.7$	$3.0 \pm 0.7$	$10.0 \pm 3.2$	$0.8 \pm 0.5$	3
	20-30m	$-27.3 \pm 0.4$	$27.9 \pm 2.3$	$5.3 \pm 4.6$	$0.0 \pm 0.0$	$3.2 \pm 1.1$	$9.5 \pm 3.6$	$0.5 \pm 0.1$	2
	40-50m	$-27.0 \pm 0.2$	$23.1 \pm 2.2$	$7.1 \pm 2.5$	$0.0 \pm 0.0$	$4.1 \pm 1.3$	$10.4 \pm 4.5$	$0.6 \pm 0.5$	3

from autochthonous food sources (Torres-Ruiz et al., 2007; Guo et al., 2016). Most terrestrial organisms are estimated to have an average  $\Sigma\omega3/\Sigma\omega6$  ratio of 0.6 (Hixson et al., 2015). In the present study the  $\Sigma\omega3/\Sigma\omega6$  ratio was close to 1 in most spiders and even  $> 1$  in web spiders in spring and summer, suggesting that aquatic-derived material was a major energy source for riparian spiders.

The high  $\Sigma\omega3/\Sigma\omega6$  ratio of riparian spiders implies a trophic transfer of  $\omega3$ -PUFAs from periphyton via emergent aquatic insects to riparian spiders. We cannot exclude, however, that spiders converted PUFAs internally from dietary precursor PUFAs or used PUFAs from terrestrial sources; e.g., some terrestrial plants produce ALA and SDA especially in seeds (Callaway et al., 1997; Guil-Guerrero, 2007) and EPA may be produced in the soil food web (Menzel et al., 2018). However, the site-specific differences that we observed for individual PUFAs, that were consistent through all trophic levels, support the idea of trophic PUFA transfer across the ecosystem boundary. For

fatty acids that are primarily found in aquatic systems (ALA, SDA, ARA, and EPA) (Hixson et al., 2015), we expected to find a correlation in content between periphyton, emergent aquatic insects and riparian spiders. Indeed, we found a positive relationship in SDA content in periphyton, emergent insects and web spiders but not ground spiders, suggesting that SDA was exported from the aquatic system via emergent insects and then incorporated into web spiders. We also saw a positive relationship between ARA content in emergent aquatic insects and web spiders, implying that web spiders obtain their ARA at least partially from emergent insects. While ARA is a  $\omega$ -6-PUFA associated with aquatic systems (Hixson et al., 2015), it was found in only small amounts in periphyton but higher amounts in aquatic invertebrates, other studies have found similar patterns (Ebm et al., 2020). The ARA source for aquatic invertebrates and ground spiders remains unclear.

We expected EPA content to be correlated among trophic levels, but no correlation was evident. Possible reasons for a



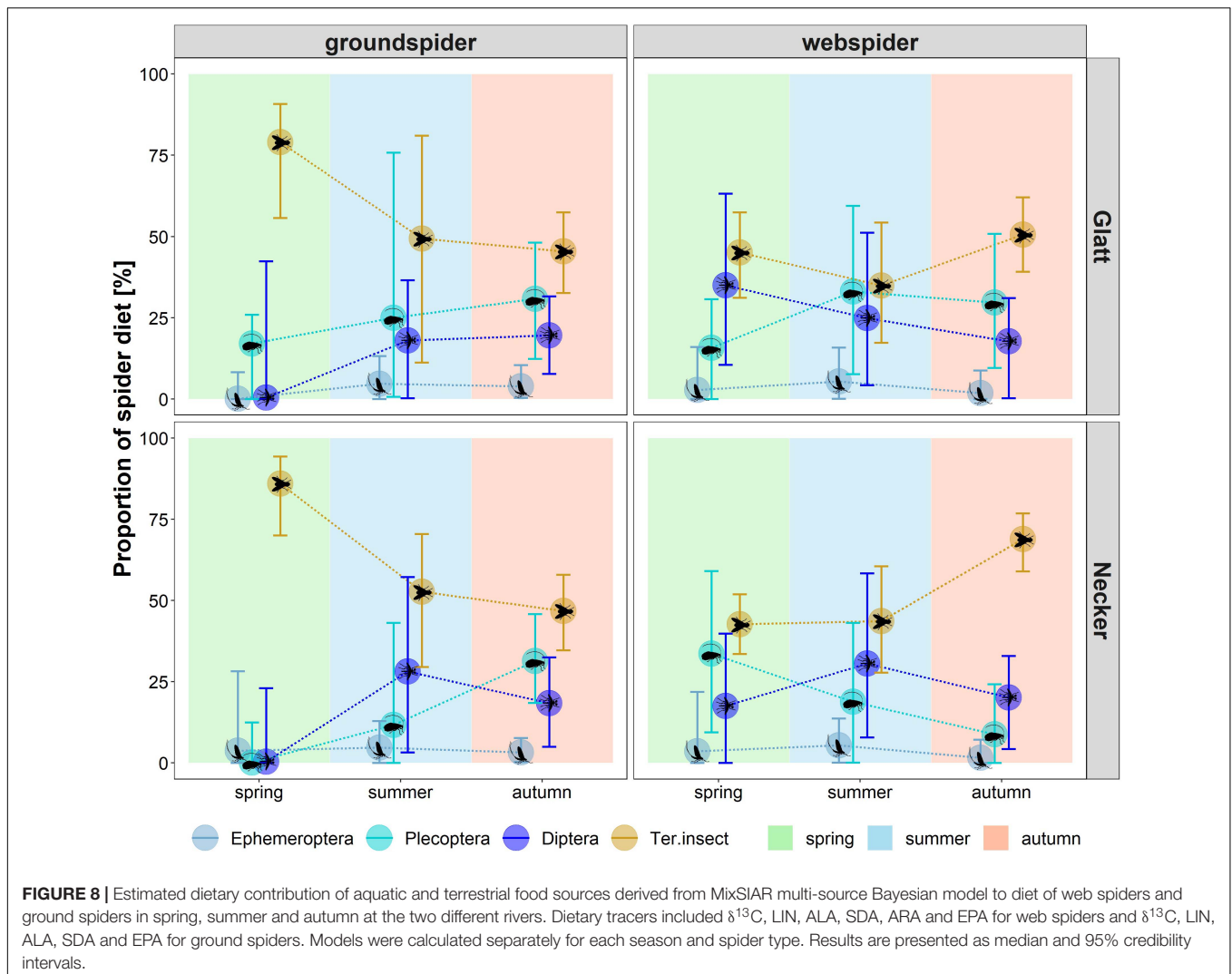
lack of EPA association among trophic levels were (1) few strong site-specific differences in emergent insect EPA, (2) EPA accumulation in spider tissues, (3) the biomass of emergent insects and therefore PUFA export might be more important than actual PUFA content in single emergent insects, (4) internal metabolism, and (5) usage of an unknown terrestrial source (e.g., soil organisms). Here, we could exclude large quantities of internal EPA production or major terrestrial EPA sources (4 and 5) based on the distance gradient and compound-specific isotope analyses. The distance gradient showed a decrease in EPA content, albeit non-significant, with distance from shore. Further, in riparian spiders analyzed compound-specific, the  $\delta^{13}\text{C}$  ratio of C20 fatty acids, where EPA comprised the greatest proportion, was similar to that of aquatic sources. These results support the idea of an aquatic EPA origin because  $\delta^{13}\text{C}$  ratios of nutritionally valuable PUFAs have been shown to be relatively constant through trophic transfer with only minor fractionation (Burian et al., 2020). Results would have been clearer with a separation between single fatty acids, but this approach could not be used in this study due to limited technical resources. Even though we were not able to completely exclude internal conversion or terrestrial EPA sources, we still found strong evidence for a predominantly aquatic origin of EPA.

The correlation between ALA content in emergent aquatic insects and spiders was relatively weak, and thus did not confirm the aquatic origin of ALA. As terrestrial insects also contain ALA (Hixson et al., 2015), the ALA in spiders is likely a mixture from different sources. Lastly, we did not expect aquatic insects to be the main source of LIN for spiders, as LIN is present in large quantities in many terrestrial organisms, including the terrestrial

Diptera that we used as reference material. Indeed, we saw only a weak correlation between LIN content in aquatic Diptera and web spiders. LIN content especially in ground spiders increased with distance from shore, supporting the hypothesis that terrestrial insects are the main LIN source for riparian spiders. However, aquatic insects contain some LIN, so spiders that feed close to 100% on aquatic subsidies can still fulfill their LIN requirements. Lastly, our results indicate that season and spider type had strong influence on PUFA content and usage of aquatic subsidies in riparian spiders.

## Seasonal Patterns

We expected to find the highest proportion of aquatic-derived resources and aquatic PUFAs, especially EPA, in spring when aquatic emergent insects are abundant and terrestrial insects are still relatively scarce (Nakano and Murakami, 2001; Uesugi and Murakami, 2007). While several isotope studies suggest riparian spiders use most aquatic-derived material in spring (Kato et al., 2004; Paetzold et al., 2005), we saw no significant change in  $\delta^{13}\text{C}$  ratio in spiders during the year. However, we observed a decrease in EPA from spring to summer to autumn, also indicating that aquatic subsidies are most widely used in spring. The proportion of aquatic vs. terrestrial material in spider diets using  $\delta^{13}\text{C}$  could be estimated only in spring, where we saw a significant difference in  $\delta^{13}\text{C}$  between aquatic and terrestrial insects. In summer and autumn, isotope signatures of Plecoptera and aquatic Diptera overlapped with the signal of terrestrial insects. The shift in the carbon isotope ratio of Plecoptera and aquatic Diptera reflected more terrestrial-derived resources being consumed in summer and autumn than spring. As food sources



could not be discriminated from each other, the usage of  $\delta^{13}\text{C}$  as method to reconstruct food sources was not possible. The  $\delta^{13}\text{C}$  ratio of spiders in summer and autumn showed that ingested carbon originated mostly from terrestrial sources, although likely in parts being cycled through the aquatic system and thereby the biomass being enriched in PUFAs.

The mixing model results, including PUFAs as dietary tracers, revealed higher amounts of aquatic-derived material in web spider diets in spring and summer than in autumn. For web spiders, PUFA profiles showed a changing trend from high EPA and SDA contents in spring to more LIN in autumn. Seasonal differences in ground spiders were less evident, although still containing highest EPA in spring. For ground spiders, a more consistent use of small amounts of aquatic subsidies across seasons seems likely. The mixing model including PUFAs showed a higher proportion of aquatic material in ground spider diet in summer and autumn than in spring and in the multivariate analysis ground spiders were most similar to aquatic insects in summer and autumn. Summarizing, aquatic subsidies provide an important dietary supplement to especially riparian web building

spiders in early spring when other food sources are low in abundance, and might play a role in reproductive success as shown for other fauna such as birds (Twining et al., 2018). Importantly, we also found that EPA quantities in riparian spiders remained relatively high during summer and autumn, indicating an ongoing use of aquatic subsidies throughout the active period of the year.

### Comparison of Spider Types

We saw a stronger aquatic-derived PUFA and stable isotope signature in web spiders than in ground spiders, especially in spring, as also reported in other studies using stable isotopes to estimate proportion of aquatic material in spider diet (e.g., Collier et al., 2002). The two spider types showed the most pronounced differences (PUFA profiles and  $\delta^{13}\text{C}$ ) in spring. For instance, stable isotope mixing model revealed that web spiders consumed on average approximately 40% and ground spiders 20% aquatic-derived carbon in spring. Other studies found up to 100% aquatic-derived material being consumed by spiders, especially web spiders (Sanzone et al., 2003). However, previous



studies have found huge site-specific differences (Collier et al., 2002). As we only used terrestrial Diptera as a reference source, we likely underestimated the amount of aquatic-derived material consumed by spiders. We saw that spiders sampled 40–50 m from shore were less depleted in carbon than the terrestrial Diptera samples, indicating that other less depleted terrestrial carbon sources were available. However, although amount of aquatic material in the diet was likely underestimated, the relative difference of about 20% between the two spider types remained, suggesting that web spiders incorporated more aquatic-derived carbon than ground spiders in spring. Importantly, this finding indicates stationary web spiders, in contrast to roaming ground spiders, use this aquatic subsidy flux in spring when more aquatic than terrestrial insects are available. Ground spiders are more mobile and can find sufficient alternate prey in riparian areas, and appear to use fewer aquatic subsidies, when only considering isotope data.

However, ground spiders contained considerable amounts of EPA. The soil food web (nematodes/collembola) might be an alternative EPA source (Menzel et al., 2018), but the compound-specific data indicated that the EPA found in ground spiders derived from aquatic sources. As EPA has been shown to be of physiological importance for ground spiders, especially the immune system (Fritz et al., 2017), it seems likely that riparian ground spiders, while accumulating the bulk of carbon from terrestrial sources, fulfill their EPA requirements by supplementing their diet with emergent aquatic insects. In fact, ground spiders might specifically accumulate/retain aquatic EPA such as other organisms that have been shown to have a higher transfer efficiency for PUFAs compared to bulk carbon (Gladyshev et al., 2011). In accordance to that, the mixing model including PUFAs estimated a higher proportion of aquatic material in both spider types' diets than the model using only  $\delta^{13}\text{C}$ . While Ramberg et al. (2020) found a significantly higher EPA content in lycosid than tetragnathid spiders, we found no significant difference in EPA content between the spider types. In contrast, SDA content (and  $\Sigma\omega 3/\Sigma\omega 6$  ratio) was higher in web spiders than ground spiders in spring, albeit only significantly at the Necker. This result indicates that while ground spiders were generally low in SDA, web spiders incorporate this PUFA if available. Indeed, SDA content in web spiders was correlated with SDA content in emergent aquatic insects. A major difference between spider types that occurred consistently during all seasons was higher ARA content in ground spiders than web spiders (also see Ramberg et al., 2020). While the ARA content in web spiders was correlated with ARA content in emergent aquatic insects, ground spiders exhibited constantly higher values. It seems likely that certain spider groups (e.g., Lycosidae) have the metabolic machinery for metabolizing ARA or that they derive it from soil organisms; especially as the ARA content increased with distance from shore. This might also explain the differences between spider types, as ground-dwelling spiders have easier access to the soil food web and thus to potentially PUFA-rich prey, such as collembola. More research is needed regarding origin of ARA in riparian food webs. Apart from ARA, both spider types had similar PUFA profiles and  $\delta^{13}\text{C}$  ratios in summer and autumn, indicating similar diets, in contrast to spring.

We found multiple differences to what degree PUFA profiles of the spiders resemble those of aquatic insects. First, the time of year that PUFA profiles of spiders were most similar to aquatic insects differed between spider types. Web spiders were closely linked to emergent insects in spring and summer, while ground spiders showed most similarities in summer and autumn. Second, web spiders were most similar to aquatic Diptera, while ground spiders especially in autumn were most similar to Plecoptera. The reason might be that Plecoptera represent an important food source especially for ground-dwelling predators due to their emergence mode (Paetzold et al., 2005; Muehlbauer et al., 2020). Both spider types were distinct from terrestrial reference samples, mainly in their higher content in SDA and EPA, and ARA for ground spiders. As only terrestrial Diptera, being highly abundant, were measured as a reference for terrestrial material, a terrestrial separation in profiles from riparian spiders would likely be less clear if different terrestrial insects were included in the analysis. Here, we suggest additional terrestrial groups be included in future studies to better clarify profiles between aquatic and terrestrial sources.

Interestingly, spiders collected for the distance gradient directly at the shore (0–2 m) were more distinct from spiders of the same lifestyle/taxonomic group (genus level) further away from shore (10–50 m) than between lifestyles. Chari et al. (2020) also found a strong decrease of PUFAs associated with the aquatic system with distance from shore. This indicates that access to aquatic insects might be stronger driver of PUFA composition than lifestyle, as aquatic insect biomass steeply declines in the first 50 meters from shoreline (Muehlbauer et al., 2014).

## Fluvial Network Specific Differences

The study was completed along a natural (Necker) and a heavily altered (Glatt) fluvial network. We expected to see lower proportion of aquatic diet (less depleted  $\delta^{13}\text{C}$  ratios) and less EPA in riparian spiders at the Glatt, because of a decoupling between the system due to the anthropogenic changes. Somewhat surprisingly,  $\delta^{13}\text{C}$  of spiders was on average more depleted at the Glatt than Necker, indicating higher proportion of aquatic material in the diet at the Glatt. There was no significant difference in EPA in spiders between systems. Other factors, like riparian vegetation structure, have been shown to influence PUFA profiles in riparian spiders (Ramberg et al., 2020), suggesting that site-specific differences along each system might be important as well. However, we saw higher SDA content in web spiders in spring in the more natural Necker. Further, SDA was found in aquatic insects and web spiders at the same sites SDA was present in periphyton, thus differences between systems occurred already at the base of the food web (i.e., primary producers). Different algae assemblages, involving taxa producing SDA in the Necker, might therefore explain the system differences. The nutrient status, higher in the Glatt than the Necker, likely caused differences in algal assemblages (Stelzer and Lamberti, 2001). Colombo et al. (2006) also found an association between cold temperatures and high SDA content in some types of algae, which might be important because of the higher water temperatures in the Glatt (mean annual temperature 2019: Glatt 10.7°C



(Hydrograph station Oberbüren); Necker 9.2°C (Hydrograph station Mogelsberg)).

We also saw a more pronounced difference between the two spider types at the natural Necker in comparison to the anthropogenic Glatt. While we saw no general reduction of the food web connectivity between the two systems, we observed some specific differences especially a lower transfer of SDA and a lower  $\Sigma\omega3/\Sigma\omega6$  ratio in spring at the Glatt than Necker. Although the Glatt has elevated nutrient levels and a sediment deficit, its flow regime is mostly natural and many reaches along the river are not channelized, thus partially explaining the lower than expected differences in aquatic-derived subsidies between systems. Rivers showing even stronger regulatory alterations or pollution might show larger effects not only on spider populations (see Paetzold et al., 2011), but also in PUFA transfer.

## CONCLUSION

Both web-building and ground-dwelling riparian spiders contained unusually high amounts of EPA for terrestrial consumers. While isotope data suggested that ground spiders derived only a small part of their carbon from aquatic sources, fatty acid analysis showed that both spider types used aquatic subsidies as an EPA source (dietary supplement). This was especially true for web spiders in spring. These results highlight that by including additional tracers, like PUFAs, in food web studies, we can track energy flow and exchange of important nutrients that might otherwise be overlooked. The difference in  $\delta^{13}\text{C}$  and PUFAs between spider lifestyles was pronounced in spring but small during the other seasons. Lastly, the difference between the anthropogenic and natural system was smaller than expected. We found mainly a higher SDA content and  $\Sigma\omega3/\Sigma\omega6$  ratio in web spiders in spring in the more natural system, but no difference in spider EPA content between systems. The high similarity in PUFA profiles, especially between aquatic Diptera and Plecoptera and riparian spiders, highlights the importance of emergent aquatic insects as vectors of PUFA transfer across ecosystem boundaries to riparian predators.

## REFERENCES

- Anderson, W. B., and Polis, G. A. (1998). Marine subsidies of island communities in the Gulf of California: evidence from stable carbon and nitrogen isotopes. *Oikos* 81, 75–80. doi: 10.2307/3546469
- Bartels, P., Cucherousset, J., Steger, K., Eklöv, P., Tranvik, L. J., and Hillebrand, H. (2012). Reciprocal subsidies between freshwater and terrestrial ecosystems structure consumer resource dynamics. *Ecology* 93, 1173–1182. doi: 10.1890/11-1210.1
- Barton, K. (2020). *MuMIn: Multi-Model Inference. R package version 1.43.17*.
- Bates, D., Maechler, M., Bolker, B., and Walker, S. (2015). Fitting linear mixed-effects models using lme4. *J. Stat. Softw.* 67, 1–48.
- Baxter, C. V., Fausch, K. D., and Carl Saunders, W. (2005). Tangled webs: reciprocal flows of invertebrate prey link streams and riparian zones. *Freshw. Biol.* 50, 201–220. doi: 10.1111/j.1365-2427.2004.01328.x
- Blomquist, G. J., Borgeson, C. E., and Vundla, M. (1991). Polyunsaturated fatty acids and eicosanoids in insects. *Insect Biochem.* 21, 99–106. doi: 10.1016/0020-1790(91)90069-q
- Brenna, J. T., Salem, N. Jr., Sinclair, A. J., and Cunnane, S. C. (2009).  $\alpha$ -Linolenic acid supplementation and conversion to n-3 long-chain polyunsaturated fatty acids in humans. *Prostaglandins Leukot. Essent. Fatty Acids* 80, 85–91. doi: 10.1016/j.plefa.2009.01.004
- Brett, M. T., Müller-Navarra, D. C., Ballantyne, A. P., Ravet, J. L., and Goldman, C. R. (2006). Daphnia fatty acid composition reflects that of their diet. *Limnol. Oceanogr.* 51, 2428–2437. doi: 10.4319/lo.2006.51.5.2428
- Burdon, F. J., and Harding, J. S. (2008). The linkage between riparian predators and aquatic insects across a stream-resource spectrum. *Freshw. Biol.* 53, 330–346.
- Burian, A., Nielsen, J. M., Hansen, T., Bermudez, R., and Winder, M. (2020). The potential of fatty acid isotopes to trace trophic transfer in aquatic food-webs. *Philos. Trans. R. Soc. B* 375:20190652. doi: 10.1098/rstb.2019.0652

## DATA AVAILABILITY STATEMENT

The raw data supporting the conclusions of this article will be made available by the authors, without undue reservation.

## AUTHOR CONTRIBUTIONS

CR, CK, and DM-C did the conceptualization, writing – original draft preparation, and writing – review and editing. CK did the formal analysis and visualization. CK and CR did the project administration. CR did the funding acquisition. All authors have read and agreed to the published version of the manuscript.

## FUNDING

Funding was provided by the Federal office of the environment (FOEN) as part of the research program “Hydraulic Engineering and Ecology.” Any opinions, findings, conclusions or recommendations expressed in this material are those of the authors and do not necessarily reflect the views of the funders.

## ACKNOWLEDGMENTS

We thank Noraen Barem, Sebastian Hartmaier, Christa Jolidon, Natascha Zinn, Benjamin Misteli, and Gabriele Consoli for assistance in the field and laboratory. Special thanks also to Petra Merkel and Carsten Schubert for their help with FA analysis. We further thank Serge Robert for the analysis of EA-IRMS and CSI samples. Thanks to Pierre Chanut for providing help with statistics and to all eco Ph.D. for inspiring discussions. Lastly, we would like to thank the reviewers for their thoughtful comments and efforts toward improving our manuscript.

## SUPPLEMENTARY MATERIAL

The Supplementary Material for this article can be found online at: <https://www.frontiersin.org/articles/10.3389/fevo.2021.707570/full#supplementary-material>

- Callaway, J., Tennilä, T., and Pate, D. (1997). Occurrence of “omega-3” stearidonic acid (cis-6, 9, 12, 15-octadecatetraenoic acid) in hemp (*Cannabis sativa* L.) seed. *J. Int. Hemp. Assoc.* 3, 61–63.
- Castro, L. F. C., Monroig, O., Leaver, M. J., Wilson, J., Cunha, I., and Tocher, D. R. (2012). Functional desaturase Fads1 ( $\Delta 5$ ) and Fads2 ( $\Delta 6$ ) orthologues evolved before the origin of jawed vertebrates. *PLoS One* 7:e31950. doi: 10.1371/journal.pone.0031950
- Chapman, M., and Underwood, A. (1999). Ecological patterns in multivariate assemblages: information and interpretation of negative values in ANOSIM tests. *Mar. Ecol. Prog. Ser.* 180, 257–265. doi: 10.3354/meps180257
- Chari, L., Richoux, N., Moyo, S., and Villet, M. (2020). Dietary fatty acids of spiders reveal spatial and temporal variations in aquatic-terrestrial linkages. *Food Webs* 24:e00152. doi: 10.1016/j.fooweb.2020.e00152
- Collier, K. J., Bury, S., and Gibbs, M. (2002). A stable isotope study of linkages between stream and terrestrial food webs through spider predation. *Freshw. Biol.* 47, 1651–1659. doi: 10.1046/j.1365-2427.2002.00903.x
- Colombo, M. L., Rise, P., Giavarini, F., De Angelis, L., Galli, C., and Bolis, C. (2006). Marine macroalgae as sources of polyunsaturated fatty acids. *Plant Foods Hum. Nutr.* 61, 64–69.
- DeNiro, M. J., and Epstein, S. (1978). Influence of diet on the distribution of carbon isotopes in animals. *Geochim. Cosmochim. Acta* 42, 495–506. doi: 10.1016/0016-7037(78)90199-0
- Ebm, N., Guo, F., Brett, M. T., Bunn, S. E., and Kainz, M. J. (2020). Polyunsaturated fatty acids in fish tissues more closely resemble algal than terrestrial diet sources. *Hydrobiologia* 848, 371–383. doi: 10.1007/s10750-020-04445-1
- Filzmoser, P., and Gschwandtner, M. (2018). *R-Package: ‘mvoutlier’-Multivariate Outlier Detection Based on Robust Methods.*
- Fox, J., and Weisberg, S. (2019). *An R Companion to Applied Regression*, 3rd Edn. Thousand Oaks CA: Sage.
- Fritz, K. A., Kirschman, L. J., McCay, S. D., Trushenski, J. T., Warne, R. W., and Whiles, M. R. (2017). Subsidies of essential nutrients from aquatic environments correlate with immune function in terrestrial consumers. *Freshw. Sci.* 36, 893–900. doi: 10.1086/694451
- Fritz, K. A., Whiles, M. R., and Trushenski, J. T. (2019). Subsidies of long-chain polyunsaturated fatty acids from aquatic to terrestrial environments via amphibian emergence. *Freshw. Biol.* 64, 832–842. doi: 10.1111/fwb.13266
- Galloway, A. W., and Budge, S. M. (2020). The critical importance of experimentation in biomarker-based trophic ecology. *R. Soc. Open Sci.* 7, 200375.
- Garrido, D., Kabeya, N., Hontoria, F., Navarro, J. C., Reis, D. B., Martín, M. V., et al. (2019). Methyl-end desaturases with  $\Delta 12$  and  $\omega 3$  regioselectivities enable the de novo PUFA biosynthesis in the cephalopod *Octopus vulgaris*. *Biochim. Biophys. Acta (BBA) Mol. Cell Biol. Lipids* 1864, 1134–1144. doi: 10.1016/j.bbalip.2019.04.012
- Gladyshev, M. I., Sushchik, N. N., Anishchenko, O. V., Makhutova, O. N., Kolmakov, V. I., Kalachova, G. S., et al. (2011). Efficiency of transfer of essential polyunsaturated fatty acids versus organic carbon from producers to consumers in a eutrophic reservoir. *Oecologia* 165, 521–531. doi: 10.1007/s00442-010-1843-6
- Gladyshev, M. I., Sushchik, N. N., and Makhutova, O. N. (2013). Production of EPA and DHA in aquatic ecosystems and their transfer to the land. *Prostaglandins Other Lipid Mediat.* 107, 117–126. doi: 10.1016/j.prostaglandins.2013.03.002
- Guil-Guerrero, J. L. (2007). Stearidonic acid (18:4n-3): metabolism, nutritional importance, medical uses and natural sources. *Eur. J. Lipid Sci. Technol.* 109, 1226–1236. doi: 10.1002/ejlt.200700207
- Guo, F., Kainz, M. J., Sheldon, F., and Bunn, S. E. (2016). The importance of high-quality algal food sources in stream food webs—current status and future perspectives. *Freshw. Biol.* 61, 815–831. doi: 10.1111/fwb.12755
- Harwood, J. L. (1996). Recent advances in the biosynthesis of plant fatty acids. *Biochim. Biophys. Acta (BBA) Lipids Lipid Metab.* 1301, 7–56. doi: 10.1016/0005-2760(95)00242-1
- Hixson, S. M., Sharma, B., Kainz, M. J., Wacker, A., and Arts, M. T. (2015). Production, distribution, and abundance of long-chain omega-3 polyunsaturated fatty acids: a fundamental dichotomy between freshwater and terrestrial ecosystems. *Environ. Rev.* 23, 414–424. doi: 10.1139/er-2015-0029
- Iverson, S. J., Field, C., Don Bowen, W., and Blanchard, W. (2004). Quantitative fatty acid signature analysis: a new method of estimating predator diets. *Ecol. Monogr.* 74, 211–235. doi: 10.1890/02-4105
- Iwata, T. (2007). Linking stream habitats and spider distribution: spatial variations in trophic transfer across a forest–stream boundary. *Ecol. Res.* 22, 619–628. doi: 10.1007/s11284-006-0060-6
- Iwata, T., Nakano, S., and Murakami, M. (2003). Stream meanders increase insectivorous bird abundance in riparian deciduous forests. *Ecography* 26, 325–337. doi: 10.1034/j.1600-0587.2003.03355.x
- Jaschinski, S., Brepohl, D. C., and Sommer, U. (2011). Seasonal variation in carbon sources of mesograzers and small predators in an eelgrass community: stable isotope and fatty acid analyses. *Mar. Ecol. Prog. Ser.* 431, 69–82. doi: 10.3354/meps09143
- Kabeya, N., Fonseca, M. M., Ferrier, D. E., Navarro, J. C., Bay, L. K., Francis, D. S., et al. (2018). Genes for de novo biosynthesis of omega-3 polyunsaturated fatty acids are widespread in animals. *Sci. Adv.* 4:eaar6849. doi: 10.1126/sciadv.aar6849
- Kabeya, N., Gür, İ., Oboh, A., Evjemo, J. O., Malzahn, A. M., Hontoria, F., et al. (2020). Unique fatty acid desaturase capacities uncovered in *Hediste diversicolor* illustrate the roles of aquatic invertebrates in trophic upgrading. *Philos. Trans. R. Soc. B* 375:20190654. doi: 10.1098/rstb.2019.0654
- Kato, C., Iwata, T., Nakano, S., and Kishi, D. (2003). Dynamics of aquatic insect flux affects distribution of riparian web-building spiders. *Oikos* 103, 113–120. doi: 10.1034/j.1600-0706.2003.12477.x
- Kato, C., Iwata, T., and Wada, E. (2004). Prey use by web-building spiders: stable isotope analyses of trophic flow at a forest-stream ecotone. *Ecol. Res.* 19, 633–643. doi: 10.1111/j.1440-1703.2004.00678.x
- Laeser, S. R., Baxter, C. V., and Fausch, K. D. (2005). Riparian vegetation loss, stream channelization, and web-weaving spiders in northern Japan. *Ecol. Res.* 20, 646–651. doi: 10.1007/s11284-005-0084-3
- Lam, M. M.-Y., Martin-Creuzburg, D., Rothhaupt, K.-O., Safi, K., Johannes, E., and Salvarina, I. (2013). Tracking diet preferences of bats using stable isotope and fatty acid signatures of faeces. *PLoS One* 8:e83452. doi: 10.1371/journal.pone.0083452
- Larsen, S., Muehlbauer, J. D., and Marti, E. (2016). Resource subsidies between stream and terrestrial ecosystems under global change. *Glob. Chang. Biol.* 22, 2489–2504. doi: 10.1111/gcb.13182
- Lenth, R. V. (2021). *emmeans: Estimated Marginal Means, aka Least-Squares Means. R package version 1.5.4.*
- Martin-Creuzburg, D., Kowarik, C., and Straile, D. (2017). Cross-ecosystem fluxes: export of polyunsaturated fatty acids from aquatic to terrestrial ecosystems via emerging insects. *Sci. Total Environ.* 577, 174–182. doi: 10.1016/j.scitotenv.2016.10.156
- Martin-Creuzburg, D., Wacker, A., and Basena, T. (2010). Interactions between limiting nutrients: consequences for somatic and population growth of *Daphnia magna*. *Limnol. Oceanogr.* 55, 2597–2607. doi: 10.4319/lo.2010.55.6.2597
- Menzel, R., Geweiler, D., Sass, A., Simsek, D., and Ruess, L. (2018). Nematodes as important source for omega-3 long-chain fatty acids in the soil food web and the impact in nutrition for higher trophic levels. *Front. Ecol. Evol.* 6:96. doi: 10.3389/fevo.2018.00096
- Moyo, S., Chari, L. D., Villet, M. H., and Richoux, N. B. (2017). Decoupled reciprocal subsidies of biomass and fatty acids in fluxes of invertebrates between a temperate river and the adjacent land. *Aquat. Sci.* 79, 689–703. doi: 10.1007/s00027-017-0529-0
- Muehlbauer, J. D., Collins, S. F., Doyle, M. W., and Tockner, K. (2014). How wide is a stream? Spatial extent of the potential “stream signature” in terrestrial food webs using meta-analysis. *Ecology* 95, 44–55. doi: 10.1890/12-1628.1
- Muehlbauer, J. D., Larsen, S., Jonsson, M., and Emilson, E. J. S. (2020). “Variables affecting resource subsidies from streams and rivers to land and their susceptibility to global change stressors,” in *Contaminants and Ecological Subsidies: The Land-Water Interface*, eds J. M. Kraus, D. M. Walters, and M. A. Mills (Cham: Springer International Publishing), 129–155. doi: 10.1007/978-3-030-49480-3\_7
- Müller-Navarra, D. C., Brett, M. T., Liston, A. M., and Goldman, C. R. (2000). A highly unsaturated fatty acid predicts carbon transfer between primary producers and consumers. *Nature* 403:74. doi: 10.1038/47469
- Nakagawa, S., and Cuthill, I. C. (2007). Effect size, confidence interval and statistical significance: a practical guide for biologists. *Biol. Rev.* 82, 591–605. doi: 10.1111/j.1469-185x.2007.00027.x

- Nakagawa, S., and Schielzeth, H. (2013). A general and simple method for obtaining R<sup>2</sup> from generalized linear mixed-effects models. *Methods Ecol. Evol.* 4, 133–142. doi: 10.1111/j.2041-210x.2012.00261.x
- Nakano, S., and Murakami, M. (2001). Reciprocal subsidies: dynamic interdependence between terrestrial and aquatic food webs. *Proc. Natl. Acad. Sci.* 98, 166–170. doi: 10.1073/pnas.98.1.166
- Nyffeler, M., Sterling, W., and Dean, D. (1994). How spiders make a living. *Environ. Entomol.* 23, 1357–1367. doi: 10.1093/ee/23.6.1357
- Oelbermann, K., and Scheu, S. (2002). Stable isotope enrichment ( $\delta^{15}\text{N}$  and  $\delta^{13}\text{C}$ ) in a generalist predator (*Pardosa lugubris*, Araneae: Lycosidae): effects of prey quality. *Oecologia* 130, 337–344. doi: 10.1007/s004420100813
- Oksanen, J., Blanchet, F. G., Friendly, M., Kindt, R., Legendre, P., McGlenn, D., et al. (2019). *vegan: Community Ecology Package. R package version 2.5-6*.
- Paetzold, A., Schubert, C. J., and Tockner, K. (2005). Aquatic terrestrial linkages along a braided-river: riparian arthropods feeding on aquatic insects. *Ecosystems* 8, 748–759. doi: 10.1007/s10021-005-0004-y
- Paetzold, A., Smith, M., Warren, P. H., and Maltby, L. (2011). Environmental impact propagated by cross-system subsidy: chronic stream pollution controls riparian spider populations. *Ecology* 92, 1711–1716. doi: 10.1890/10-2184.1
- Paetzold, A., Yoshimura, C., and Tockner, K. (2008). Riparian arthropod responses to flow regulation and river channelization. *J. Appl. Ecol.* 45, 894–903. doi: 10.1111/j.1365-2664.2008.01463.x
- Pawlosky, R., Denkins, Y., Ward, G., and Salem, N. Jr. (1997). Retinal and brain accretion of long-chain polyunsaturated fatty acids in developing felines: the effects of corn oil-based maternal diets. *Am. J. Clin. Nutr.* 65, 465–472. doi: 10.1093/ajcn/65.2.465
- Popova, O. N., Haritonov, A. Y., Sushchik, N. N., Makhutova, O. N., Kalachova, G. S., Kolmakova, A. A., et al. (2017). Export of aquatic productivity, including highly unsaturated fatty acids, to terrestrial ecosystems via Odonata. *Sci. Total Environ.* 581, 40–48. doi: 10.1016/j.scitotenv.2017.01.017
- R Core Team (2019). *R: A Language and Environment for Statistical Computing*. Vienna: R Foundation for Statistical Computing.
- Ramberg, E., Burdon, F. J., Sargac, J., Kupilas, B., Rišnovanu, G., Lau, D. C., et al. (2020). The structure of riparian vegetation in agricultural landscapes influences spider communities and aquatic-terrestrial linkages. *Water* 12:2855. doi: 10.3390/w12102855
- Richardson, J. S., Zhang, Y., and Marczak, L. B. (2010). Resource subsidies across the land–freshwater interface and responses in recipient communities. *River Res. Appl.* 26, 55–66. doi: 10.1002/rra.1283
- Rounick, J., and Winterbourn, M. (1986). Stable carbon isotopes and carbon flow in ecosystems. *BioScience* 36, 171–177. doi: 10.2307/1310304
- Sabo, J., and Power, M. (2002). River–watershed exchange: effects of riverine subsidies on riparian lizards and their terrestrial prey. *Ecology* 83, 1860–1869. doi: 10.2307/3071770
- Sanzone, D., Meyer, J., Martí, E., Gardiner, E., Tank, J., and Grimm, N. (2003). Carbon and nitrogen transfer from a desert stream to riparian predators. *Oecologia* 134, 238–250. doi: 10.1007/s00442-002-1113-3
- Sayanova, O. V., and Napier, J. A. (2004). Eicosapentaenoic acid: biosynthetic routes and the potential for synthesis in transgenic plants. *Phytochemistry* 65, 147–158. doi: 10.1016/j.phytochem.2003.10.017
- Schlott, N., Roulin, A., Ebert, D., and Martin-Creuzburg, D. (2016). Combined effects of dietary polyunsaturated fatty acids and parasite exposure on eicosanoid-related gene expression in an invertebrate model. *Comp. Biochem. Physiol. A Mol. Integr. Physiol.* 201, 115–123. doi: 10.1016/j.cbpa.2016.07.008
- Sokal, R. R., and Rohlf, J. F. (1995). *Biometry*. San Francisco, CA: W.H. Freeman.
- Stanley, D. W. (2014). *Eicosanoids in Invertebrate Signal Transduction Systems*. Princeton, NJ: Princeton University Press.
- Stelzer, R. S., and Lamberti, G. A. (2001). Effects of N: P ratio and total nutrient concentration on stream periphyton community structure, biomass, and elemental composition. *Limnol. Oceanogr.* 46, 356–367. doi: 10.4319/lo.2001.46.2.0356
- Stillwell, W., and Wassall, S. R. (2003). Docosahexaenoic acid: membrane properties of a unique fatty acid. *Chem. Phys. Lipids* 126, 1–27. doi: 10.1016/S0009-3084(03)00101-4
- Stock, B. C., Jackson, A. L., Ward, E. J., Parnell, A. C., Phillips, D. L., and Semmens, B. X. (2018). Analyzing mixing systems using a new generation of Bayesian tracer mixing models. *PeerJ* 6:e5096. doi: 10.7717/peerj.5096
- Torres-Ruiz, M., Wehr, J. D., and Perrone, A. A. (2007). Trophic relations in a stream food web: importance of fatty acids for macroinvertebrate consumers. *J. North Am. Benthol. Soc.* 26, 509–522. doi: 10.1899/06-070.1
- Torres-Ruiz, M., Wehr, J. D., and Perrone, A. A. (2010). Are net-spinning caddisflies what they eat? An investigation using controlled diets and fatty acids. *J. North Am. Benthol. Soc.* 29, 803–813. doi: 10.1899/09-162.1
- Twining, C. W., Bernhardt, J., Derry, A., Hudson, C., Ishikawa, A., Kabeya, N., et al. (2020a). The evolutionary ecology of fatty-acid variation: implications for consumer adaptation and diversification. *Authorea Preprints* [Preprint].
- Twining, C. W., Brenna, J. T., Hairston, N. G., and Flecker, A. S. (2016a). Highly unsaturated fatty acids in nature: what we know and what we need to learn. *Oikos* 125, 749–760. doi: 10.1111/oik.02910
- Twining, C. W., Brenna, J. T., Lawrence, P., Shipley, J. R., Tollefson, T. N., and Winkler, D. W. (2016b). Omega-3 long-chain polyunsaturated fatty acids support aerial insectivore performance more than food quantity. *Proc. Natl. Acad. Sci. U.S.A.* 113, 10920–10925. doi: 10.1073/pnas.1603998113
- Twining, C. W., Shipley, J. R., and Winkler, D. W. (2018). Aquatic insects rich in omega-3 fatty acids drive breeding success in a widespread bird. *Ecol. Lett.* 21, 1812–1820. doi: 10.1111/ele.13156
- Twining, C. W., Taipale, S. J., Ruess, L., Bec, A., Martin-Creuzburg, D., and Kainz, M. J. (2020b). Stable isotopes of fatty acids: current and future perspectives for advancing trophic ecology. *Philos. Trans. R. Soc. B* 375:20190641. doi: 10.1098/rstb.2019.0641
- Uesugi, A., and Murakami, M. (2007). Do seasonally fluctuating aquatic subsidies influence the distribution pattern of birds between riparian and upland forests? *Ecol. Res.* 22, 274–281. doi: 10.1007/s11284-006-0028-6
- Uttaro, A. D. (2006). Biosynthesis of polyunsaturated fatty acids in lower eukaryotes. *IUBMB Life* 58, 563–571. doi: 10.1080/15216540600920899
- Wise, D. (1993). *Spiders in Ecological Webs*. New York, NY: Cambridge University Press.
- Wood, S. N. (2017). *Generalized Additive Models: An Introduction with R*. Boca Raton, FL: CRC press.

**Conflict of Interest:** The authors declare that the research was conducted in the absence of any commercial or financial relationships that could be construed as a potential conflict of interest.

Copyright © 2021 Kowarik, Martin-Creuzburg and Robinson. This is an open-access article distributed under the terms of the Creative Commons Attribution License (CC BY). The use, distribution or reproduction in other forums is permitted, provided the original author(s) and the copyright owner(s) are credited and that the original publication in this journal is cited, in accordance with accepted academic practice. No use, distribution or reproduction is permitted which does not comply with these terms.