



Tracing the Sars-CoV-2 impact

The first month in Switzerland

Journal Article**Author(s):**

[Molloy, Joseph](#) ; Tchervenkov, Christopher; Hintermann, Beat; [Axhausen, Kay W.](#) 

Publication date:

2020-05-28

Permanent link:

<https://doi.org/10.3929/ethz-b-000424218>

Rights / license:

[Creative Commons Attribution-NonCommercial 4.0 International](#)

Originally published in:

Transport Findings, <https://doi.org/10.32866/001c.12903>

TRANSPORT FINDINGS

Tracing the Sars-CoV-2 Impact: The First Month in Switzerland

Joseph Molloy¹ , Christopher Tchervenkov¹ , Beat Hintermann² , Kay W. Axhausen¹ ¹ IVT, ETH Zurich, ² WWZ, Uni Basel

Keywords: covid-19, corona, accessibility, gps tracking, mobility behaviour, switzerland, sars-cov-2

<https://doi.org/10.32866/001c.12903>

Transport Findings

This note describes the changes in travel behaviour in response to the spread of the Sars-CoV-2 epidemic in Switzerland. The existing analyses of the Google or the national Intervista data have limits due to missing socio-demographic details about their users. We briefly describe our GPS tracking panel and its sample. The analyses focus on the changes for different income groups and for the differences in accessibility.

It will be supplemented by the weekly

<https://ivtmobis.ethz.ch/mobis/covid19/reports>

RESEARCH QUESTION AND HYPOTHESIS

This paper gives some first insights into the ability of the participants of different socio-economic groups to accommodate the massive restrictions in the transport supply and activity possibilities resulting from the special measures to limit the spread of the corona virus. On March 16th 2020 Switzerland implemented regulations closing all non-essential service and industrial facilities until further notice. The residents were asked to forgo all travel, except for essential work, medical care, or grocery shopping. Solitary or small-group exercise was not explicitly forbidden, but many public areas were closed by the local authorities to stop the congregation of larger groups. Public transport services were either suspended or massively reduced in frequency.

The speed of the doubling of the number of cases had fallen to 26 days by April 11th and to less than 1 percent per day by May 1st. The Federal government is reviewing the restrictions weekly, but a first easing was implemented on April 27th with more easing after May 11th.

While the federal government has access to unpublished GSM-based analyses on the movements of the residents, only the graphs published by Google¹ and the results of an on-going commercial tracking study undertaken by the local Intervista market research firm² are public.

¹ <https://www.google.com/covid19/mobility/>

² published together with other statistics by the Kanton Zürich (https://statistik.zh.ch/internet/justiz_innere/statistik/de/covid19.html)

The MOBIS-COVID study aims to trace and explain the changes and understand the differences between persons and locations. The hypothesis is that the mobility adjustments will vary between different socio-economic groups within the Swiss population. In particular, we focus on the impacts by income, gender and accessibility by home location.

METHODS AND DATA

A consortium consisting of researchers from ETH Zürich, University of Basel and the Zürcher Hochschule für Angewandte Wissenschaften (ZHAW) is conducting the MOBIS study: <https://www.ivt.ethz.ch/en/research/mobis.html>. In Autumn 2019 an eight week GPS-tracking study of 3700 persons was undertaken to assess the size of the behavioural impact of mobility pricing in Switzerland. We noted that about 250 of the 3700 participants voluntarily continued with the tracking after the MOBIS data collection was complete. In mid March we re-invited the remaining participants to reactivate the tracking app we had used *Catch-my-Day* developed by Motion-Tag, Berlin. A total of 1610 have re-installed the app and resumed tracking, as far as we can tell given the absence of movement of many of the participants. The app records all out-doors movements, divides the stream of GPS points into stages and trips, and imputes the travel modes. The respondents can verify the imputation and can add a trip purpose. We had encouraged the respondents to do so, but it was not obligatory.

The original sample had focused on persons who stated that they are using both cars and public transport for their daily travel. For the recruitment we limited ourselves to the French and German speaking parts of Switzerland, as the efforts involved in recruiting from the Italian speaking portion of the population (9%) was deemed disproportionate. Our sample generally matches the known socio-demographics of Switzerland, even without re-weighting. The daily and weekly counts have been normalised to account for the varying sample size as participants re-activated the tracking.

FINDINGS

We present a first set of results highlighting some first insights from the data. The focus will be on the changes for participants by their income and by the basic accessibility of their home locations. Table 1 compares our sample with socio-demographics of the last national travel diary in 2015, but note in particular the difference between the studies with regards to the employment status, i.e. being employed, in an apprenticeship or being self-employed.

The comparison with the population representative Intervista panel in Fig. 1 shows that our panel matches it in its response. In advance of the lock-down the distance travelled was decreasing, but the effect of its imposition is clearly visible in that week. In the following weeks travel rebounds with a dip for

Table 1: Comparison with the last national travel diary Mikrozensus (MZ) 2015

Variable	Value	N		%	
		MOBIS	MZ	MOBIS	MZ
Access to car	No	12	2,587	0.8	6.2
	Yes	1,406	31,824	90.4	75.8
	Sometimes	137	7,584	8.8	18.1
Age	under 18	-	7,546	-	13.2
	18 - 25	244	5,126	16.7	9.0
	26 - 35	261	8,117	17.9	14.2
	36 - 45	297	8,789	20.3	15.4
	46 - 55	342	9,560	23.4	16.7
	56 - 65	317	7,384	21.7	12.9
	66+	-	10,568	-	18.5
Language	German	1,129	39,023	72.6	68.4
	French	426	14,450	27.4	25.3
	Italian	-	3,617	-	6.3
Education	Mandatory	90	9,954	5.8	19.3
	Secondary	730	25,594	46.9	49.5
	Higher education	735	16,124	47.3	31.2
Employment Status	Employed	1,148	27,521	73.8	48.2
	Self-employed	104	4,133	6.7	7.2
	Apprentice	8	1,488	0.5	2.6
	Unemployed	52	1,423	3.3	2.5
	Student	74	2,114	4.8	3.7
	Other	104	9,421	6.7	16.5
	Retired	65	10,990	4.2	19.3
Gender	Female	774	28,928	49.8	50.7
	Male	781	28,162	50.2	49.3
Household Size	1	202	19,439	13.0	34.0
	2	522	20,222	33.6	35.4
	3	315	7,400	20.3	13.0
	4	392	7,133	25.2	12.5
	5 or more	124	2,897	8.0	5.1
Monthly Income	4 000 CHF or less	89	10,139	5.7	17.8
	4 001 - 8 000 CHF	444	18,728	28.6	32.8
	8 001 - 12 000 CHF	467	9,945	30.1	17.4
	12 001 - 16 000 CHF	253	3,878	16.3	6.8
	More than 16 000 CHF	161	2,593	10.4	4.5
	Prefer not to say	139	11,807	9.0	20.7
Nationality	Swiss	1,442	43,347	92.7	75.9
	Other	113	13,743	7.3	24.1

Source: For the Mikrozensus 2015 see Federal Office of Statistics (2017)

the Easter weekend. Males continue to travel more than the females in both studies. The differences between the studies become much smaller under the constrained conditions.

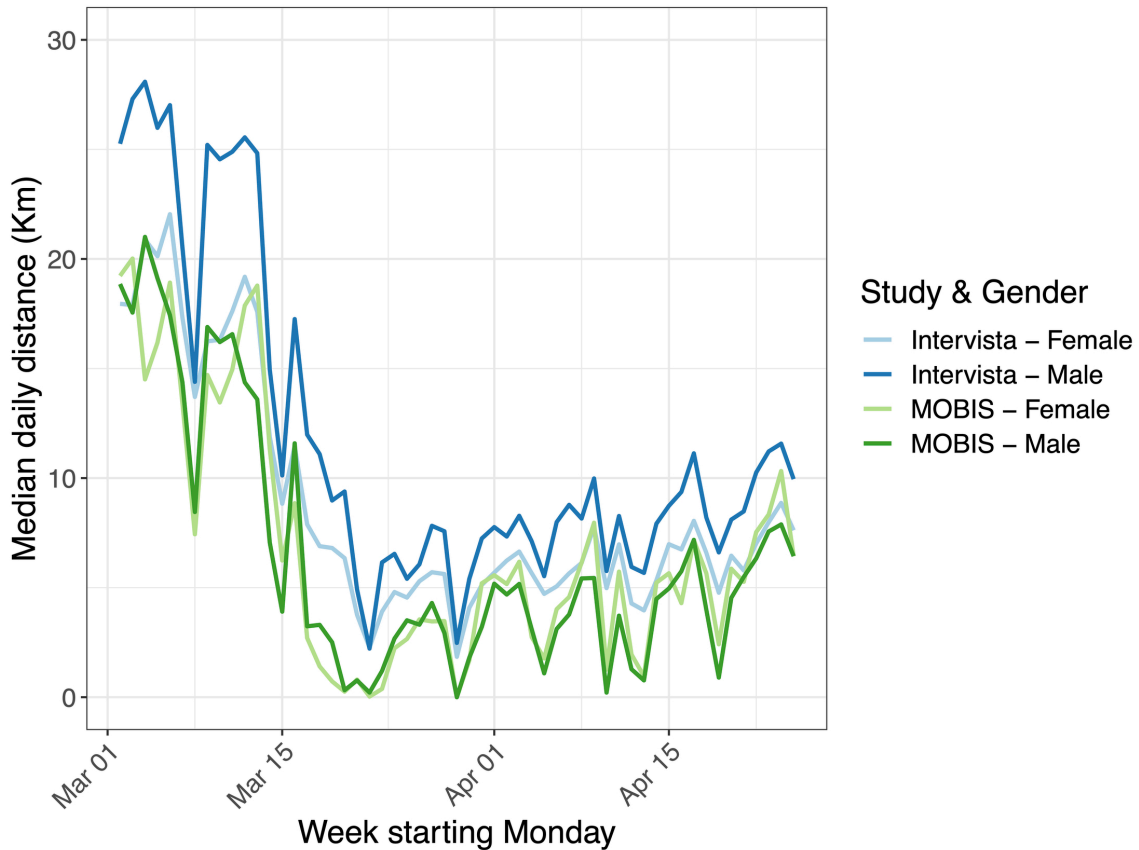


Figure 1: Weekly Person kilometres travelled by gender and study

Source: Including data from Intervista AG (2020)

The general level of accessibility of the home location influences the total kilometers travelled and the reductions observed during the lockdown, as seen in Fig. 3. In the before period we see clear differences by accessibility-quintiles of the home locations, which become less pronounced in the restricted period.

The activity space is a convenient summary measure of the range and scope of the activities of the persons (See Schönfelder and Axhausen (2010)). These collapse together with the number of trips per days, but more so. The number of trips per workday shrink to 60% of their previous about 5 trips per day, and the activity spaces to 20% of their previous size, as seen in Table 2. Trip duration remains relatively constant except for bicycle use, with difference between genders (Table 3). Striking is the increase in bicycle use. We have compared the trend against the numbers of last national travel diary and see that this increase is above and beyond the usual increase in spring time. Further analysis, not shown here, reveals that the increase is due to weekend afternoon use, suggesting a clear sporting, fitness, leisure motivation.

Formal modelling of these behaviours, especially to see if there is a change in the preference structures, will begin with the end of the restrictions. It will be interesting to see, firstly, how different socio-economic groups respond, and if this shock is able to break routines or if they will reassert themselves again.

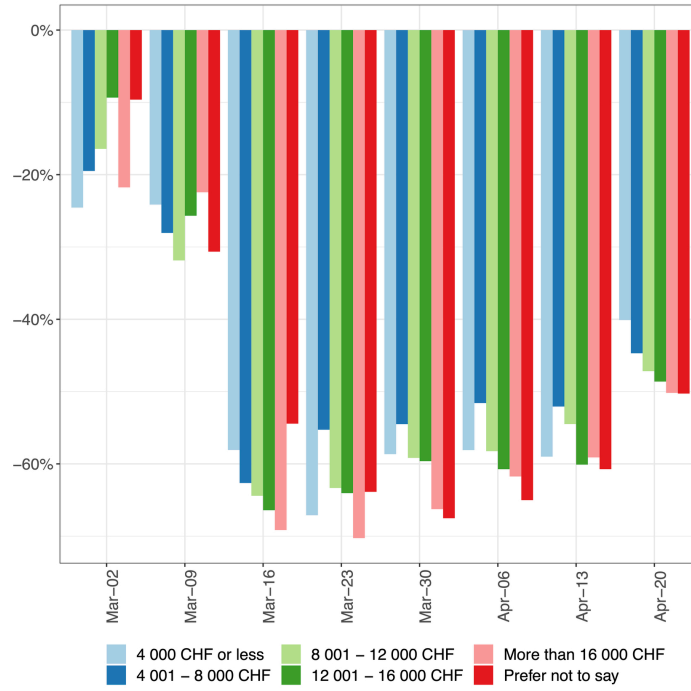


Figure 2: Change in average kilometers travelled. Weekly observations with less than 5 participants removed.
(a) by employment status

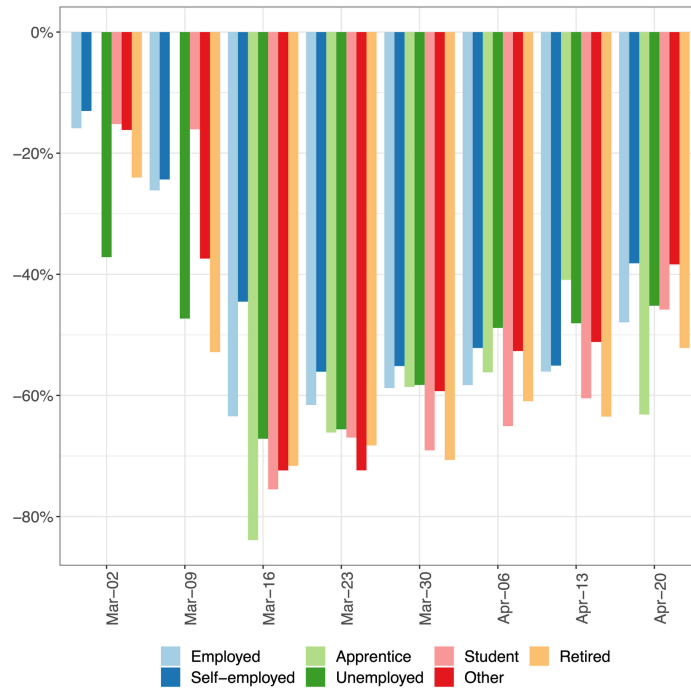


Figure 3: Weekly change in person kilometres travelled by general accessibility quintiles
(b) by monthly income

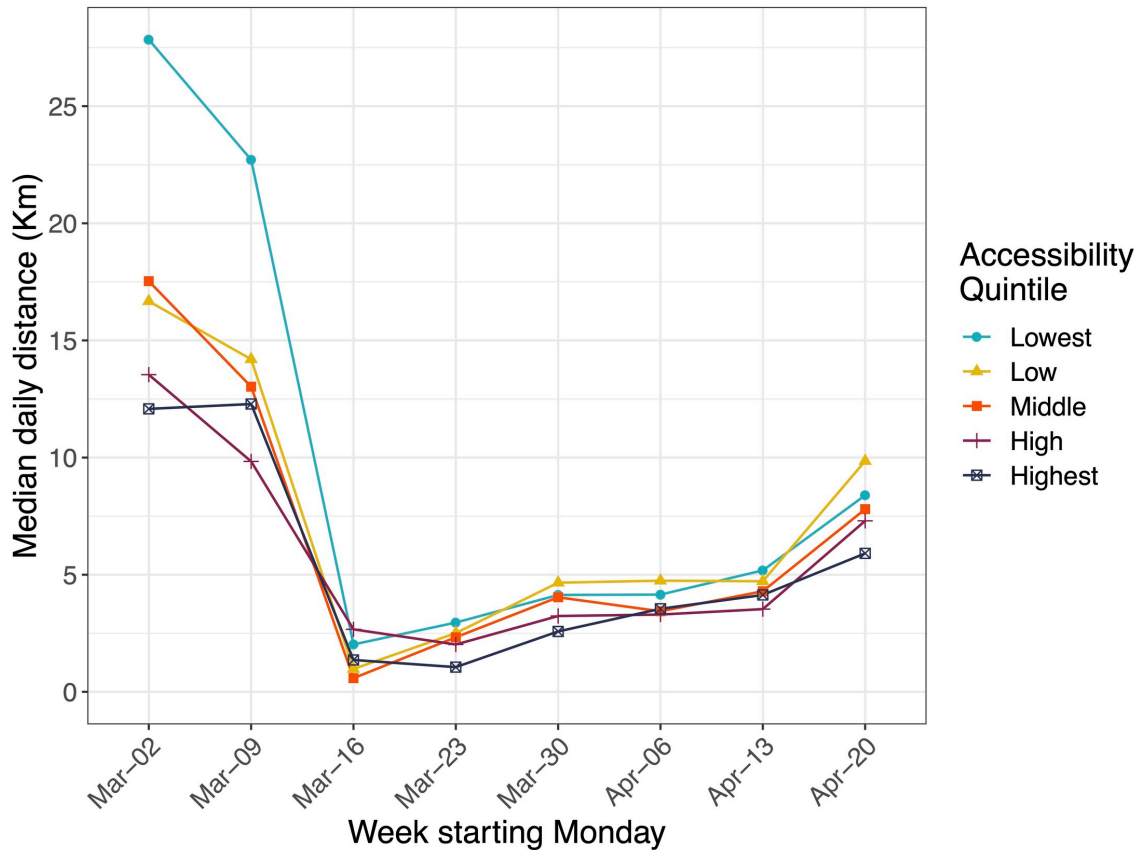


Figure 3: Weekly change in person kilometres travelled by general accessibility quintiles

Source: The general accessibility values are the main factor of a factor analysis of car and transit accessibilities for both employment and population by municipality or district with the larger cities (See Loder and Axhausen (2018))

Table 2: Weekly Change in the size of median activity space (ha) by type of day and age class

Age		Mar-02	Mar-09	Mar-16	Mar-23	Mar-30	Apr-06	Apr-13	Apr-20
(18,25]	Weekday	35.9	48.1	6.9	2.6	3.0	5.7	7.9	10.6
	Weekend	5.8	9.8	0.6	0.9	0.8	1.2	1.3	2.4
(25,35]	Weekday	85.2	42.6	2.3	4.9	4.6	7.4	6.1	10.5
	Weekend	14.5	3.3	0.4	0.6	1.3	2.3	1.8	2.6
(35,45]	Weekday	36.4	75.0	6.8	3.3	7.6	8.2	10.8	11.3
	Weekend	29.9	20.5	0.4	1.6	0.8	1.4	1.5	4.2
(45,55]	Weekday	40.5	53.8	4.0	3.1	4.4	7.0	5.2	10.0
	Weekend	13.3	7.0	0.7	1.2	1.6	1.6	2.3	4.0
(55,65]	Weekday	64.0	46.4	7.3	2.8	5.8	5.1	7.1	8.6
	Weekend	9.1	8.7	0.1	1.2	1.1	1.2	3.8	3.1

ACKNOWLEDGEMENTS

We are grateful for the willingness of the 1610 volunteers who continue to track themselves allowing us to understand in detail the impact of the Sars-CoV-2 crisis on Swiss travel behaviour. This work is a spin-off of the MOBIS

Table 3: Median trip duration by gender and mode in minutes

Mode	Gender	Mar-02	Mar-09	Mar-16	Mar-23	Mar-30	Apr-06	Apr-13	Apr-20
Bicycle	Female	15	16	14	19	27	31	39	27
	Male	14	15	25	24	28	36	33	30
Bus	Female	7	8	4	5	6	5	6	5
	Male	8	9	7	7	6	7	7	6
Car	Female	41	38	36	36	36	37	36	38
	Male	47	42	34	34	35	35	35	35
Train	Female	31	35	19	28	28	16	18	29
	Male	25	33	12	26	23	19	25	23
Tram	Female	13	16	8	14	14	9	7	12
	Male	20	17	12	11	13	12	11	12
Walk	Female	22	21	19	18	21	21	21	19
	Male	20	20	16	18	20	21	21	19

Source: Note that we employ the mode imputation as offered by the app, which has only been validated by a subset of the participants

project funded by SCEER and the Swiss Federal Office of Roads, which also provided some extra funding for this unexpected continuation for which we are especially thankful. The results and their interpretations are our own.

The contribution of the full MOBIS team is very much appreciated. The reviewers' comments helped to improve the paper substantially. All remaining errors are our own.



This is an open-access article distributed under the terms of the Creative Commons Attribution 4.0 International License (CC BY-NC-4.0). View this license's legal deed at <https://creativecommons.org/licenses/by-nc/4.0> and legal code at <https://creativecommons.org/licenses/by-nc/4.0/legalcode> for more information.

REFERENCES

Federal Office of Statistics. 2017. *Verkehrsverhalten Der Bevölkerung. Ergebnisse Des Mikrozensus Mobilität Und Verkehr 2015 [Mobility Behaviour of the Population. Results of the Microcensus Mobility and Transport 2015]*. Neuchâtel: Bundesamt für Statistik.

Intervista AG. 2020. "Mobilitäts-Monitoring Covid-19, Online Report Published by Statistical Office of Kanton." Zürich, Zürich. https://statistik.zh.ch/internet/justiz_inneres/statistik/de/aktuell/mitteilungen/2020/covid_mobilitaetsverhalten.html.

Loder, Allister, and Kay Werner Axhausen. 2018. "Mobility Tools and Use: Accessibility's Role in Switzerland." *Journal of Transport and Land Use* 11 (1). <https://doi.org/10.5198/jtlu.2018.1054>.

Schönfelder, S., and K.W. Axhausen. 2010. *Urban Rhythms and Travel Behaviour: Spatial and Temporal Phenomena of Daily Travel*. Ashgate Publishing, Ltd.