

Association of Body Composition, Physical Functioning, and Protein Intake in Adult Patients With Mitochondrial Diseases

Journal Article**Author(s):**

Zweers, Heidi E.E.; Bordier, Valentine; in't Hulst, Jeanne; Janssen, Mirian C.H.; Wanten, Geert J.A.; Leij-Halfwerk, Susanne

Publication date:

2021-01

Permanent link:

<https://doi.org/10.3929/ethz-b-000408051>


Rights / license:

[Creative Commons Attribution-NonCommercial 4.0 International](#)

Originally published in:

Journal of Parenteral and Enteral Nutrition 45(1), <https://doi.org/10.1002/jpen.1826>

Association of Body Composition, Physical Functioning, and Protein Intake in Adult Patients With Mitochondrial Diseases

Heidi E. E. Zweers, BSc^{1,2} ; Valentine Bordier, MSc^{2,3}; Jeanne in 't Hulst, MSc^{1,2,4}; Mirian C. H. Janssen, PhD⁵; Geert J. A. Wanten, PhD⁶; and Susanne Leij-Halfwerk, PhD^{1,2}

Journal of Parenteral and Enteral Nutrition
 Volume 45 Number 1
 January 2021 165–174
 © 2020 The Authors. *Journal of Parenteral and Enteral Nutrition* published by Wiley Periodicals, Inc. on behalf of American Society for Parenteral and Enteral Nutrition.
 DOI: 10.1002/jpen.1826
 wileyonlinelibrary.com
WILEY

Abstract

Background: Whether decreased physical functioning of patients with mitochondrial disease (MD) is related to altered body composition or low protein intake needs clarification at the background of the nutrition state. **Methods:** In this 2-site cross-sectional study, MD patients were age-, body mass index (BMI)-, and gender-matched to controls. Body composition was assessed by dual-energy x-ray absorptiometry. Physical functioning was measured by handgrip strength, 6-minute walking test, 30-second sit-to-stand test (30SCT), and 6-minute mastication test. Total daily protein intake was calculated by 3-day food records. Malnutrition was assessed by Patient-Generated Subjective Global Assessment and the Global Leadership Initiative on Malnutrition (GLIM) criteria and sarcopenia by the 2018 consensus. Data were analyzed using independent samples *t*-tests, Fisher exact test, and Spearman and Pearson correlation coefficients. **Results:** Thirty-seven MD patients (42 ± 12 years, BMI: 23 ± 4 kg/m², 59% females) and 37 matched controls were included. Handgrip strength was moderate, inversely related to fat mass index in both MD patients and controls, whereas it correlated with fat-free mass index in controls solely. Protein intake was associated with muscle strength (handgrip strength and 30SCT) in MD patients but not in controls. Twenty-seven MD patients (73%) were malnourished, and 5 (14%) were classified as sarcopenic. **Conclusions:** Muscle strength is related to body composition and protein intake in MD patients. This, in combination with the high incidence of both malnutrition and sarcopenia, warrants individual nutrition assessment in MD patients. (*JPEN J Parenter Enteral Nutr.* 2021;45:165–174)

Keywords

BIA; body composition; DXA; handgrip strength; malnutrition; mitochondrial disease; nutrition assessment; physical functioning; sarcopenia

Clinical Relevancy Statement

Physical functioning is chronically impaired in adult patients with mitochondrial disease, implicating decreased quality of life. Insights in the relation between protein intake, body composition, and physical functioning in these patients and the prevalence of malnutrition and sarcopenia could help to improve patient care.

Introduction

Approximately 1 out of 5000 persons worldwide is confronted with mitochondrial disease (MD),¹ a genetic neuromuscular chronic disorder causing intracellular energy (adenosine triphosphate) shortage.¹ As MD patients experience a wide range of complaints, such as fatigue, muscular weakness, gastrointestinal complaints, dysphagia,

From the ¹Department of Gastroenterology and Hepatology-Dietetics, Radboudumc, Nijmegen, the Netherlands; ²Department of Nutrition and dietetics, HAN University of Applied Sciences, Nijmegen, the Netherlands; ³Department of Health Science and Technology, ETHZ, Zurich, Switzerland; ⁴Nutrition and Health, Wageningen University, Wageningen, the Netherlands; ⁵Department of Internal Medicine, Radboudumc, Nijmegen, the Netherlands; and the ⁶Department of Gastroenterology and Hepatology, Radboudumc, Nijmegen, the Netherlands.

Financial disclosure: None declared.

Conflicts of interest: None declared.

Received for publication May 31, 2019; accepted for publication February 25, 2020.

This article originally appeared online on March 19, 2020.

Corresponding Author:

Heidi E. E. Zweers, BSc, Department of Gastroenterology and Hepatology-Dietetics, Radboudumc, Nijmegen, the Netherlands, Postbus 9101 6500 HB Nijmegen.

Email: heidi.zweers-vanessen@radboudumc.nl

This is an open access article under the terms of the Creative Commons Attribution-NonCommercial License, which permits use, distribution and reproduction in any medium, provided the original work is properly cited and is not used for commercial purposes.

and exercise intolerance,^{2,3} treatment focuses on symptom relief, securing physical functioning, and quality of life.²

Poor physical functioning is predicted by a body weight that is either too low or too high,⁴⁻⁷ conditions that are frequently observed in MD patients.⁸⁻¹² Also, body composition is known to be an important factor in physical functioning in the general population as well as in neuromuscular disorders in particular.^{6,7,13,14} Decreased physical functioning was related to an increased fat mass in patients with myotonic dystrophy¹³ or with decreased muscle mass in patients with muscular dystrophy.^{6,7,15} In patients with chronic symptoms similar to MD, like kidney disease,¹⁶ lower fat-free mass and decreased muscle strength were associated. An increased muscle mass and strength may also be related to lower diabetes risk.¹⁷ Altered body composition in MD patients has been reported,^{9,12} and higher skeletal muscle mass index in these patients was correlated with higher muscle strength.¹² However, whether physical functioning is related to fat mass has not been established yet.

It is known that physical activity improves physical function and body composition.¹⁸ The decreased physical activity in MD patients¹⁰ is likely to play a role in body composition and physical functioning in these patients. However, it is not known whether MD patients' physical functioning is decreased because of altered body composition and/or if this possibly is influenced by nutrition intake. It is known that physical function in MD patients can be improved by physical exercise¹⁹; therefore, exercise is part of standard care in MD patients.²⁰

The combination of low muscle mass and low muscle strength seen in MD patients may be defined as sarcopenia.^{21,22} Sarcopenia significantly reduces functioning, as well as survival.^{21,23} Therefore, it is relevant to know whether sarcopenia is also present in MD patients in order to adjust treatment accordingly.²⁴

The low physical functioning in MD patients may also be related to alterations in nutrition intake and nutrition status. Recent observational studies suggested that MD patients have inadequate protein intake and are at risk of malnutrition.^{9,24-26} This could affect both body composition and physical functioning. Diagnosing malnutrition in MD patients is challenging.^{9,27} Standard screening tools aimed at screening acute malnutrition are not applicable in MD patients, as these patients suffer from chronic malnutrition.²⁴ Recent literature advises to perform nutrition assessment to determine nutrition state in MD patients,^{9,24,26} but it is not known which measurements are valid or which cutoff values should be applied.

The primary goal of this study is to explore the association between physical functioning, protein intake, and body composition in adult MD patients. Additionally, the prevalence of malnutrition and sarcopenia in this MD population is assessed using various nutrition assessment tools. Finally, the diagnostic accuracy of bioelectrical impedance analysis

(BIA) to determine body composition in MD patients was tested.

Methods

In this 2-site, cross-sectional study, the associations between physical functioning, protein intake, and body composition were examined in MD patients compared with age-, body mass index (BMI)-, and gender-matched controls. The study protocol was approved by the ethics committee of the Nijmegen-Arnhem region (NL58262.091.16/2016-2667).

Primary and Secondary End Points

The primary end point was the association between physical functioning, protein intake and body composition in MD patients. The secondary end point is the prevalence of malnutrition and sarcopenia in MD patients.

Study Population

Genetically confirmed MD patients and healthy controls were included if they (1) were ≥ 18 years of age and (2) had signed informed consent. Controls were matched with included MD patients for age (± 5 years), BMI (± 2 kg/m²), and gender. Exclusion criteria were (1) a pacemaker or implant, (2) pregnancy or lactation, (3) disordered hydration status (edema, dehydration), (4) diagnosis of a (chronic) disease interfering with the nutrition assessment, or (5) acute illness and fever. Additionally, MD patients were excluded in case of (1) non-genetically confirmed MD diagnosis, (2) diagnosis of none myopathic MD phenotype, or (3) unavailability of dual-energy x-ray absorptiometry (DXA) and handgrip-strength data.

A sample size of 37 MD patients and 37 controls was calculated using data of MD patients ($n = 24$) and compared with the reference values of Dodds²⁸ to show a difference of physical functioning between MD patients and controls with a power of 0.80 and an α of 0.05 based on an estimated dropout rate of 30%, using the handgrip strength as primary outcome variable for physical functioning.

Data Collection

MD patients' data were prospectively obtained from the Radboudumc's MD expertise center (Radboud Centre for Mitochondrial Medicine [RCMM]) from March 2015 until January 2017. MD patients were measured during a 4-day multidisciplinary evaluation program (as usual care) in the internal medicine ward. Controls were measured at the Nutritional Assessment Lab of the HAN University of Applied Sciences between August 2017 and July 2018.

Demographic and Disease Characteristics

Age (years) and gender were collected from electronic records in MD patients or obtained at day of measurement

in controls. In addition, MD patients' genotype and phenotype as well as the presence of dysphagia or gastrointestinal problems were registered.

Physical Functioning

Physical functioning was assessed according to the applicable standard operating procedures using 4 tools relevant for MD patients. Muscle strength was measured by handgrip strength (kg)^{21,29} and 30-second sit-to-stand test (30SCT; number of sit-to-stands).³⁰ Endurance was measured by the 6-minute walk test (6MWT; meters)^{21,31} and the 6-minute mastication test (6MMT; number of chew cycles).³²

Anthropometry and Body Composition

Height (cm), weight (kg), and waist circumference (cm) were measured to the nearest 1 decimal point. Total fat mass (kg), total appendicular skeletal muscle mass (kg), and regional lean tissue mass (kg) were determined by whole-body DXA (Radboundumc: Hologic, model Discovery A S/N 85606; HAN: Hologic, model Horizon W S/N 200103).³³ Fat mass, appendicular skeletal muscle mass, and regional lean tissue mass were normalized by dividing total mass (kg) by height (m) squared into fat mass index (kg/m²), skeletal muscle index (kg/m²), and regional lean tissue mass index (kg/m²), respectively.

Additionally, BIA measurements were performed according to clinical practice (Bodystat MDD 1500, 50 Hz). Fat-free mass (kg) was calculated twice using (1) Kyle formula,³⁴ having the smallest standard error and highest R²,³⁴ and (2) Dey, being validated in the elderly.³⁵

The diagnostic accuracy of the BIA was tested using the DXA as the golden standard. The sensitivity and specificity were determined using the cutoff point of <15 kg/m² and <17 kg/m² for fat-free mass index in women and men, respectively,³⁶ and obesity as fat percentage >30% for women and >25% for men.³⁷

Nutrition Intake

Nutrition intake was assessed by either a 3-day food record or, in case missing in clinic, a dietary history using the nutrition calculation program Madows. Mean energy (kcal/d) and protein (g/kg body weight/d) intake were calculated. Number of persons on a specific diet were registered.

Malnutrition and Sarcopenia

Malnutrition was assessed by Patient-Generated Subjective Global Assessment (PG-SGA) (score of ≥ 4 was interpreted as risk for malnutrition and ≥ 9 as malnourished)³⁸ and the global leadership initiative on malnutrition (GLIM) criteria.²⁹ Sarcopenia was classified using handgrip strength. The cutoff point for 70-year-olds²¹ as well as the actual age cutoff point for low handgrip strength²⁸ was applied, as the majority of MD patients are younger than

70 years. Sarcopenic obesity was diagnosed according to Baumgartner.³⁹

Data Management

Data were entered encoded in an online case report form (Castor, CIWIT B.V., Amsterdam, the Netherlands) and double-checked visually by 2 researchers.

Statistical Analysis

Data were reported as means \pm SD, median and interquartile range, or frequencies and percentage of the group or total population, if applicable. Normal distribution of the variables was assessed by Shapiro-Wilk tests. Differences between MD patients and controls were tested using the independent *t*-test or Mann-Whitney *U* tests for continuous variables and Pearson χ^2 test or Fisher exact test for categorical variables.

Pearson or Spearman correlation coefficients were determined to assess the relations between physical functioning, (regional) body composition, and protein intake. Because fat-free mass index and skeletal muscle mass index were associated, only fat-free mass index was used in association analysis. Statistical analyses were performed using SPSS statistics (IBM Statistics 23). To correct for multiple testing, *P*-values $\leq .02$ were considered statistically significant for all analyses.

Results

Thirty-seven MD patients and 37 matched controls (all white) were included in this study (Figure 1). Mean age was 42 ± 12 years, and 59% were female (Table 1). Despite having similar BMI, MD patients had a shorter stature compared with controls. Compared with controls, MD patients were on a (diabetes) diet and experienced gastrointestinal problems or dysphagia more often. The majority of the MD patients were diagnosed with the m.3243A>G mutation (78%) (Table 2).

Physical Functioning

Physical functioning in MD patients was lower compared with that of controls, based on all physical functioning tests (Table 3).

Body Composition

Total appendicular skeletal muscle mass was lower in MD patients compared with controls (*P* < .02) (Table 3), whereas no differences in total body fat or muscle mass were observed. Also, leg lean tissue mass index was lower in MD patients compared with controls (Table 3).

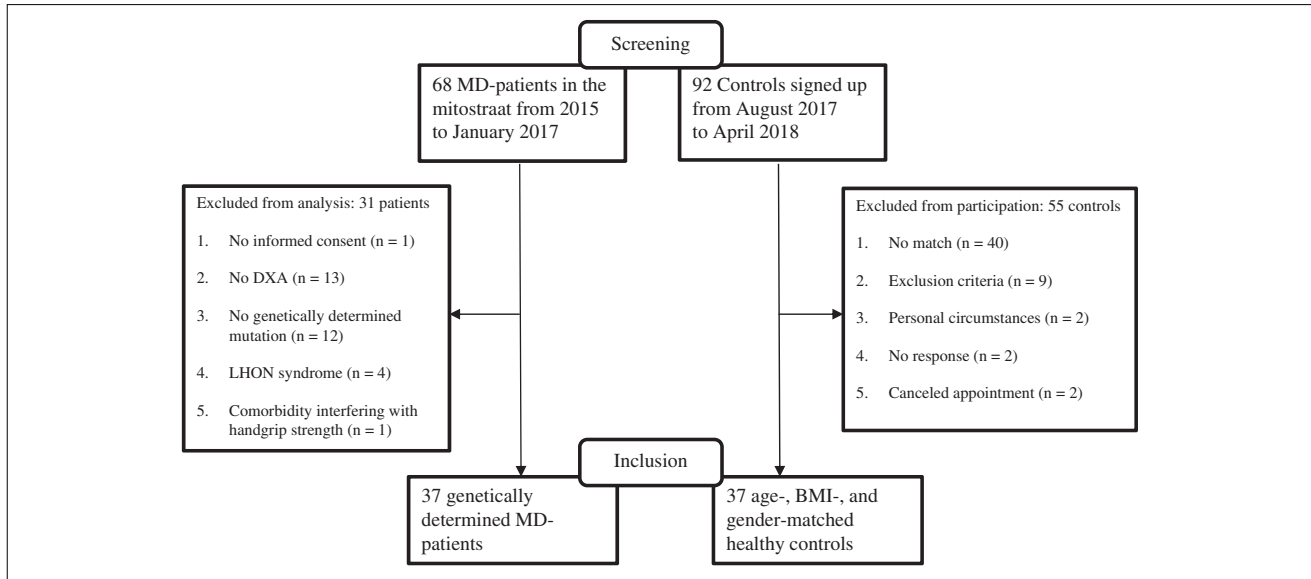


Figure 1. Screening flowchart of MD patients and controls in the DYNAMO study. BMI, body mass index; DXA, dual-energy x-ray assessment; LHON, Leber's hereditary optic neuropathy; MD, mitochondrial disease

Table 1. Demographics of MD Patients and Controls.

| Demographics | MD patients (n = 37) | Controls (n = 37) | P-value |
|---------------------------------------------|-------------------------|----------------------|---------|
| Age, y (mean ± SD) | 42 ± 13 | 42 ± 12 | .84 |
| Female (n/%) | 22 (59%) | 22 (59%) | |
| BMI, kg/m ² , (median: IQR) | 21.9: 19.9–24.5 | 23.0: 21.3–25.0 | .54 |
| BMI categories (n/%) | | | |
| <18.5, kg/m ² | 2 (5%) | 0 (0%) | |
| <20, kg/m ² | 9 (24%) | 4 (11%) | |
| 20–25, kg/m ² | 20 (54%) | 23 (62%) | |
| 25–30, kg/m ² | 6 (16%) | 10 (27%) | |
| >30, kg/m ² | 2 (5%) | 0 (0%) | |
| Weight, kg (mean ± SD) | 66.6 ± 12.3 | 72.2 ± 8.9 | .04 |
| Weight loss ^a (n/%) | 4 (11%) | 2 (5%) | .39 |
| Height, cm (mean ± SD) | 170.8 ± 1.0 | 176.4 ± 0.9 | .01 |
| Waist circumference, cm, (mean ± SD) | 84.3 ± 11.5 | 81.8 ± 8.0 | .30 |
| High waist circumference ^b (n/%) | 14 (38%) | 12 (32%) | .46 |
| Diet (n/%) | 25 (68%) | 2 (5%) | <.001 |
| Gastrointestinal problems (n/%) | 28 (76%) | 5 (13.5%) | <.001 |
| Dysphagia (n/%) | 18 (49%) | 0 (0%) | <.001 |

P-values ≤ .02 (in bold) were considered significant.

BMI, body mass index; IQR, interquartile range; MD, mitochondrial disease.

^aWeight loss according to Global Leadership Initiative on Malnutrition (GLIM) criteria: >5% within past 6 months or >10% beyond 6 months.²⁹

^bHigh waist circumference >94 cm (women) and >80 cm (men) according to World Health Organization (WHO) 2008.⁴³

Association Between Physical Functioning and Body Composition

Handgrip strength was increased with higher fat-free mass index in controls (Pearson $r = 0.67$, $P < .001$) but not in MD patients (Pearson $r = 0.30$, $P = .08$) (Figure 2A).

In all MD patients together, no significant association between handgrip strength and skeletal muscle mass index was observed; however, a significant association for the m.3243A>G mutation genotype subgroup (Spearman $r = 0.31$, $P = .06$, and $r = 0.44$, $P < .02$, respectively) was observed (Table S1). Handgrip strength declined in both MD

Table 2. Disease Characteristics of Mitochondrial Disease Patients (n = 37).

| Disease Characteristics | Frequency (n) | Proportion (%) |
|-------------------------|---------------|----------------|
| Genotype | | |
| m.3243A>G | 29 | 78 |
| Point mutations (mtDNA) | 5 | 14 |
| nDNA mutation | 2 | 5 |
| Deletion mtDNA | 1 | 3 |
| Phenotype | | |
| Mitochondrial myopathy | 14 | 38 |
| MIDD | 13 | 35 |
| MELAS | 4 | 11 |
| CPEO | 3 | 8 |
| Leigh syndrome | 2 | 5 |
| MERRF | 1 | 3 |

CPEO, chronic progressive external ophthalmoplegia; MELAS, mitochondrial encephalomyopathy, lactic acidosis, and stroke-like episodes; MERRF, myoclonus epilepsy with ragged-red fibers; MIDD, maternally inherited diabetes and deafness; mtDNA, mitochondrial DNA; nDNA, nuclear DNA.

patients and controls with higher fat mass index (Spearman $r = -0.61$ and $r = -0.49$, respectively; $P < .01$) (Figure 2B).

Nutrition Intake

Energy intake was significantly lower in MD patients compared with controls (Table 3). Moreover, significantly more patients had an energy and protein intake below the recommended intake (Table 3).

Association Between Physical Functioning and Protein Intake

Protein intake was inversely correlated with fat mass index in MD patients (Spearman $r = -0.55$, $P < .01$) and controls (Spearman $r = -0.39$, $P = .02$) (Figure 2C). Physical function was increased with higher protein intake in MD patients, as measured by the 30SCT ($r = 0.57$, $P = .006$) (Figure 2D) and handgrip strength (Spearman $r = 0.39$, $P = .02$) (Table S2), but not in controls.

Other Associations

Protein intake and handgrip strength correlated with arm lean tissue mass index in MD patients and controls, respectively (MD patients: Pearson $r = 0.53$, $P < .01$ and controls: Pearson $r = 0.81$, $P < .001$). No correlations were found between either the 6MWT or the 6MMT and body composition in MD patients and controls. The 30SCT correlated with fat mass index ($r = 0.41$, $P = .01$) but not with fat-free mass index ($r = 0.01$, $P = .96$) in controls solely. No correlations were found between the 30SCT and 6MWT with leg lean tissue mass index. The 6MMT

correlated moderately with protein intake (Spearman $r = 0.45$, $P = .02$) in MD patients (Table S2).

Malnutrition and Sarcopenia

According to the PG-SGA, 32 MD patients (86%) were in need of a nutrition intervention, whereas this was only the case in 2 controls (6%) (Table 3). According to the GLIM criteria, 46% of the MD patients were malnourished, whereas 43% were malnourished according to the PG-SGA (Table 3). If the PG-SGA data were combined with the GLIM data, 27 MD patients (73%) were classified as malnourished. Sarcopenia was observed in 14% or 27% of the MD patients using either the consensus criterion or the actual age cutoff point for low handgrip strength, respectively.

Diagnostic Accuracy of BIA vs the DXA

The BIA-derived fat-free mass formulas of both Kyle and Dey show good correlation with DXA fat-free mass in MD patients (Kyle $r^2 = 0.9$, Dey $r^2 = 0.8$) as well as in controls (Kyle $r^2 = 0.94$). BIA tends to overestimate fat-free mass compared with DXA (mean difference = 1.8 kg, $P = .01$; 95% CI, -3.8 to 7.4 kg). BIA sensitivity (66%) and specificity (57%) to diagnose obesity are lower than to diagnose malnutrition (sensitivity 77%, specificity 93%) (Table S3).

Discussion

The main finding of this study is that muscle strength is related with body composition and protein intake in MD patients.

Hou et al (2019)¹² found a positive correlation between skeletal muscle mass index and muscle strength ($r = 0.4$), which is consistent with our hypothesis but was not significant in our cohort; this may be due to smaller numbers. However, a positive association between skeletal mass index and handgrip strength was found in the m.3243A>G genotype subgroup (Table S1), and a moderate association between handgrip strength and arm lean tissue mass index was found.

Surprisingly, sarcopenia existed in MD patients only, whereas no difference in muscle mass between MD patients and controls was observed. This might imply that handgrip strength and body composition are differently associated in MD patients compared with controls. Our results confirm a different association in fat-free mass index with handgrip strength between controls (Pearson $r = 0.67$, $P < .001$) and MD patients (Pearson $r = 0.30$, $P = .08$, Figure 2A).

A high prevalence of malnutrition in MD patients (73%) was confirmed.⁹ According to the GLIM criteria, 46% of the MD patients were malnourished, whereas 43% were malnourished according to the PG-SGA (Table 3). This

Table 3. Physical Functioning, Body Composition, Nutrition Intake, Malnutrition, and Sarcopenia in MD Patients and Controls.

| Physical functioning, body composition, nutritional intake, malnutrition and sarcopenia | MD patients (n = 37) | Controls (n = 37) | P-value* |
|-----------------------------------------------------------------------------------------|-------------------------|----------------------|-----------------|
| Physical functioning test | | | |
| Handgrip strength, kg, (mean ± SD) | 28 ± 10 | 43 ± 9 | <.001 |
| Too low handgrip strength ^a (n/%) | 6 (16) | 0 (0) | |
| Too low handgrip strength ^b (n/%) | 15 (41) | 0 (0) | |
| 6MMT (n chewing cycles) (mean ± SD) | 396 ± 130 (n = 29) | 577 ± 141 (n = 36) | <.001 |
| 30SCT (n sit-to-stands) (mean ± SD) | 12 ± 4 (n = 22) | 17 ± 4 (n = 36) | <.001 |
| 6MWT (distance in m) (median; IQR) | 441: 426–427 (n = 20) | 681: 635–639 | <.001 |
| 6MWT < 400 m (n/%) | 3 (15) | 0 (0) | |
| Total body composition | | | |
| FMI, kg/m ² , (median; IQR) | 7.7: 6.7–8.7 | 7.0: 6.3–7.7 | .25 |
| Fat percentage (%) (mean ± SD) | 22 ± 7 | 16 ± 7 | .21 |
| High fat percentage ^c (n/%) | 9 (24) | 7 (19) | .21 |
| ASM, kg, (mean ± SD) | 17.6 ± 4.0 | 19.8 ± 3.8 | .02 |
| FFMI, kg/m ² , (mean ± SD) | 15.2 ± 1.9 | 15.5 ± 1.6 | .38 |
| SMI, kg/m ² , (mean ± SD) | 6.0 ± 1.0 | 6.3 ± 0.9 | .11 |
| Too low SMI ^d (n/%) | 25 (68) | 21 (57) | .34 |
| Bone density, g/cm ² , (mean ± SD) | 0.31 ± 0.83 | 0.27 ± 0.80 | .99 |
| Osteopenia ^e (n/%) | 3 (8) | 0 (0) | .08 |
| Regional LTMI, kg/m², (mean ± SD) | | | |
| Average arm | 1.3 ± 0.30 | 1.3 ± 0.3 | .42 |
| Trunk | 12.7 ± 2.0 | 13.1 ± 1.5 | .34 |
| Average leg | 3.8 ± 0.7 | 4.3 ± 0.6 | .004 |
| Nutrition intake | | | |
| Protein intake, g/kg/d, (median; IQR) | 1.1: 0.9–1.4 | 1.2: 1.1–1.7 | .07 |
| Too low protein intake ^f (n/%) | 25 (68%) | 4 (12%) | <.01 |
| Energy, kcal/d | 1663 ± 500 | 2322 ± 644 | <.001 |
| Energy intake (% of calculated needs, mean ± SD) | 81% ± 23.8% | 98% ± 25.1% | .03 |
| Too low energy intake ^g (n/%) | 25 (68%) | 17 (46%) | |
| PG-SGA ^h | | | <.001 |
| PG-SGA ^h 0–4 (n/%) | 5 (14%) | 35 (95%) | |
| PG-SGA ^h 4–9 (n/%) | 16 (43%) | 1 (3%) | |
| PG-SGA ^h ≥9 (n/%) | 16 (43%) | 1 (3%) | |
| Malnutrition ⁱ (n/%) | 17 (46%) | 10 (27%) | .09 |
| Severe malnutrition ⁱ (n/%) | 1 (3%) | 0 (0%) | |
| Sarcopenia ^j (n/%) | 5 (14%) | 0 (0%) | .02 |
| Sarcopenic obesity ^k (n/%) | 4 (11%) | 3 (8%) | .7 |

30SCT, 30-second sit-to-stand test; 6MMT, 6-minute mastication test; 6MWT, 6-minute walk test; ASM, appendicular muscle mass; FFMI, fat-free mass index; FMI, fat mass index; GLIM, Global Leadership Initiative on Malnutrition; IQR, interquartile range; LTMI, lean tissue mass index; PG-SGA, Patient-Generated Subjective Global Assessment; SMI, skeletal muscle index.

*P-values ≤ .02 (in bold) were considered significant.

^aToo low handgrip strength = <16 kg for women and <27 kg for men based on Dodds reference at age 70²⁸ according to the sarcopenia consensus 2018.²²

^bToo low handgrip strength based on Dodds reference²⁹ according to actual age.²²

^cHigh fat percentage according to the sarcopenic obesity criteria of Baumgartner = >28% for men and >40% for women.⁴⁰

^dToo low SMI <7 kg/m² for men and <6 kg/m² for women according to the recommendations from European Working Group on Sarcopenia in Older People 2 (EWGSOP2).^{22,30}

^eOsteopenia = *t*-score between -1 and -2.5.

^fToo low protein intake = <1.2 g/kg/d for MD patients at risk for malnutrition = PG-SGA ≥4 and/or malnutrition according to GLIM criteria (n = 34; 92% off MD patients) and 0.8 g/kg/d for controls and MD patients not at risk for malnutrition.

^gToo low energy intake <90% of calculated energy needs = resting energy expenditure according to the Harris and Benedict formula (1984) and an activity factor of 1.4 for mobile MD patients, 1.2 for immobile MD patients, and 1.5 for controls.¹⁰

^hPG-SGA: 0–1 does not require nutrition input, 2–3 requires nutrition education, 4–8 requires specialized nutrition intervention, ≥9 indicates in critical need of symptom management together with specialized nutrition intervention/malnutrition.³⁹

ⁱMalnutrition and severe malnutrition according to GLIM criteria.³⁰

^jSarcopenia according to 2018 consensus.²²

^kSarcopenic obesity according to Baumgartner⁴⁰ low SMI and high fat percentage.

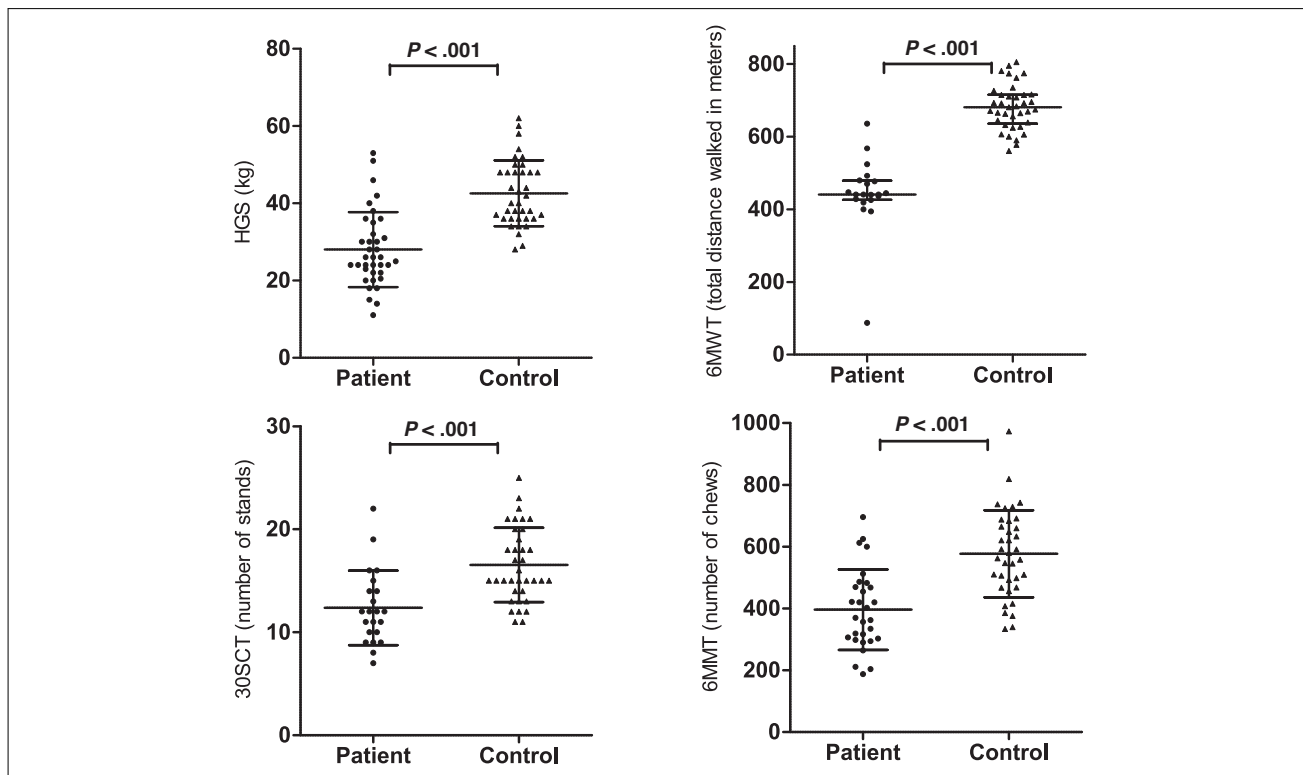


Figure 2. Association between HGS, 30SCT, fat mass index, fat-free mass index, and protein intake. *P*-values < .02 (in bold) were considered significant. 6MMT, 6-minute mastication test; 6MWT, 6-minute walking test; 30SCT, 30-second sit-to-stand test; HGS, handgrip strength.

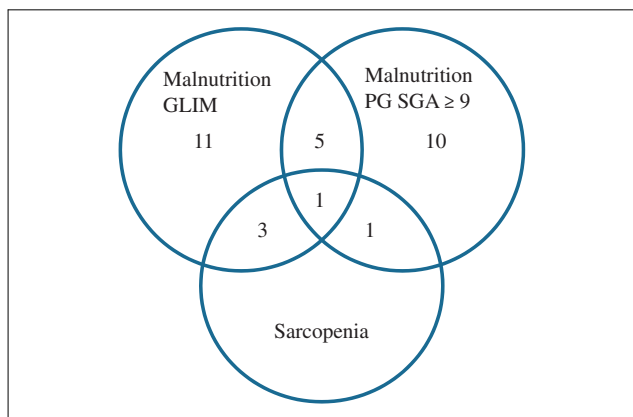


Figure 3. Venn diagram malnutrition according to GLIM criteria and PG-SGA score ≥ 9 and Sarcopenia consensus 2018. GLIM, Global Leadership Initiative on Malnutrition; PG-SGA, Patient-Generated Subjective Global Assessment.

seems to be a consistent result; however, Figure 3 shows low comparability in malnutrition between the 2 methods. A better comparability was seen between sarcopenia and malnutrition because all patients diagnosed with sarcopenia were also classified as malnourished (Figure 3). This low comparability underlines the challenges of diagnosing malnutrition and the conclusions of Aubry et al (2017)⁹ that

nutrition assessment should be part of patient care in all adult MD patients. For measuring body composition, DXA should be preferably used instead of BIA because of the higher accuracy. For physical functioning, it is advisable to measure handgrip strength and use the actual age cutoff point of the Dodds reference.²⁸ The incidence of sarcopenia with this actual age cutoff point (27%) is very similar to the results of Hou et al (2019),¹² who observed sarcopenia in 24.7% of the MD patients. The risk for malnutrition according to the PG-SGA is higher in the current study compared with the slightly overlapping cohort from the DINAMITE study²⁶—89% vs 55%. The DINAMITE study cohort consisted of outpatients, whereas the DYNAMO study cohort was more severely affected, which justified a 4-day hospital admission. According to Hou et al,¹² body composition is a sensitive biomarker of disease severity in MD patients. As low muscle mass is an indicator for malnutrition, the difference in malnutrition risk observed in the 2 studies is probably due to differences in disease severity.

The observed decreased physical functioning in MD patients confirms previous studies.¹²

Except for lower stature, lower appendicular skeletal muscle mass, and lower leg lean tissue mass index, body composition in MD patients was not different compared with that of controls. Although not significant and less

profound, our data showed a trend toward higher fat mass and lower lean mass in MD patients, which is similar to other studies.^{9,12} In the study by Aubry et al (2017),⁹ MD patients had higher BMI with comparable weight than MD patients had in the current study. Moreover, their MD-patient group consisted of more males and had a higher mean age compared with that of the current study.⁹ As height and body composition are known to be gender- and age-related,^{7,13} this may have contributed to the (larger) difference in body composition observed in the study of Aubry et al (2017).⁹ When comparing the individual MD patients' and controls' body composition in the current study with reference values,⁴⁰ a low skeletal muscle index in both MD patients and controls (68% vs 57%) was observed. This result was anticipated for the MD patients, but not for the controls, and might indicate that either the controls do not represent a healthy status of body composition or the reference data are not representative for the healthy Dutch population.

A lower protein intake (g/kg/d) could not be confirmed in MD patients compared with controls ($P = .07$). However, relative to their protein needs, more MD patients have a protein intake that is too low (68%) compared with that of controls (12%).

The matched-control design, together with the accurate measurement of whole and regional body composition using DXA, is a strength of this study. The small study sample size is a shortcoming. However, taking into account the low prevalence of MD, a total of 37 MD patients is considerable.

Data collection bias may have occurred because multiple professionals performed the measurements, although standard operating procedures have been applied. Validity of the DXA measurements may be influenced by the use of 2 scanners. However, that the body composition was not different in MD patients compared with controls could not be explained by this, because the body composition measured by BIA confirms that there was no difference between body composition in MD patients compared with controls (Table S3). Furthermore, underreporting or overreporting of nutrition intake might have occurred.

Causal relationships could not be established in this study. The associations observed were moderate at best, indicating confounding or influencing factors. Handgrip strength is known to be dependent by physical strength exercise, and also, gender and age play a big role.⁴¹ Gender and age cannot be changed, but exercise and nutrition intake is something that can be influenced.

Although fat mass did not differ between MD patients and controls, MD patients frequently have a high fat percentage (24%, Table 3) and high waist circumference (38%, Table 1). As patients with neuromuscular disease are at risk for developing metabolic syndrome,⁴² monitoring body composition is recommended. If DXA is not available, and

because BIA has low sensitivity and specificity of diagnosing high fat percentage (Table S3), waist circumference in MD patients is the preferred method. Nutrition strategies aiming at improving physical functionality and preventing metabolic syndrome are recommended. Improving protein intake seems a good start because a positive moderate association between protein and muscle strength was found as well as a moderate negative association between fat mass and protein intake. Prospective intervention studies are recommended to investigate whether adjusting protein intake may improve functioning and muscle mass.

Conclusion

In conclusion, MD patients have decreased physical functioning. There is a moderate inverse association between handgrip strength and fat mass index in MD patients and controls, between handgrip strength and fat-free mass index in controls only, and between protein intake and muscle strengths in MD patients only. This, in combination with the high prevalence of both malnutrition and sarcopenia, warrants nutrition assessment in MD patients. Future intervention studies on improving protein intake are recommended.

Acknowledgments

We thank the patients and healthy volunteers for their time and effort. We thank R. Akkermans PhD, for his statistical assistance. We thank our students L. Boegborn BSc, S. Martens MSc, J. Moens BSc, I. Evers MSc, L. Martens MSc, and M. de Jong MSc, for their help in data collection and analyses. Finally, we thank Mr. G. Markwalder for designing the DYNAMO logo.

Statement of Authorship

H. E. E. Zweers drafted the manuscript. H. E. E. Zweers, S. Leij-Halfwerk, V. Bordier, and J. in 't Hulst contributed to the acquisition, analysis and the interpretation of the data. H. E. E. Zweers and S. Leij-Halfwerk equally contributed to the conception and design of the research. M. C. H. Janssen and G. J. A. Wanten contributed to the design of the research and the interpretation of the data. All authors critically revised the manuscript, agree to be fully accountable for ensuring the integrity and accuracy of the work, and read and approved the final manuscript.

Supplementary Information

Additional supporting information may be found online in the Supporting Information section at the end of the article.

References

1. Schaefer AM, Taylor RW, Turnbull DM, Chinnery PF. The epidemiology of mitochondrial disorders—past, present and future. *Biochim Biophys Acta*. 2004;1659(2-3):115-120.

2. de Laat P, Koene S, van den Heuvel LPWJ, Rodenburg RJ, Janssen MCH, Smeitink JAM. Clinical features and heteroplasmy in blood, urine and saliva in 34 Dutch families carrying the m.3243A>G mutation. *J Inherit Metab Dis*. 2012;35(6):1059-1069.
3. Mancuso M, Angelini C, Bertini E, et al. Fatigue and exercise intolerance in mitochondrial diseases. Literature revision and experience of the Italian network of mitochondrial diseases. *Neuromuscular Disorders: NMD*. 2012;22 (suppl 3):S226-229.
4. Ferreira RS, da Silva Coqueiro R, Barbosa AR, Pinheiro PA, Fernandes MH. Relationship between BMI and physical performance among older adults. *Geriatr Nurs*. 2013;34(6):465-468.
5. Visser M, Harris T, Langlois J, et al. Body fat and skeletal muscle mass in relation to physical disability in very old men and women of the Framingham Heart Study. *J Gerontol A Biol Sci Med Sci*. 1998;53(3):M214-M221.
6. Skalsky AJ, Abresch RT, Han JJ, Shin CS, McDonald CM. The relationship between regional body composition and quantitative strength in facioscapulohumeral muscular dystrophy (FSHD). *Neuromuscul Disord*. 2008;18(11):873-880.
7. Palmieri GM, Bertorini TE, Griffin JW, Igarashi M, Karas JG. Assessment of whole body composition with dual energy x-ray absorptiometry in Duchenne muscular dystrophy: correlation of lean body mass with muscle function. *Muscle Nerve*. 1996;19(6):777-779.
8. de Laat P, Zweers H, Knuijt S, Smeitink JAM, Wanten GJA, Janssen MCH. Dysphagia, malnutrition and gastrointestinal problems in patients with mitochondrial disease caused by the m3243A>G mutation. *Neth J Med*. 2015;73(1):30-36.
9. Aubry E, Aeberhard C, Bally L, et al. Are patients affected by mitochondrial disorders at nutritional risk? *Nutrition*. 2018;47: 56-62.
10. Apabhay S, Gorman GS, Sutton L, et al. Habitual physical activity in mitochondrial disease. *PLoS One*. 2011;6(7):e22294.
11. Boal RL, Ng YS, Pickett SJ, et al. Height as a clinical biomarker of disease burden in adult mitochondrial disease. *J Clin Endocrinol Metab*. 2019;104(6):2057-2066.
12. Hou Y, Xie Z, Zhao X, Yuan Y, Dou P, Wang Z. Appendicular skeletal muscle mass: a more sensitive biomarker of disease severity than BMI in adults with mitochondrial diseases. *PLoS One*. 2019;14(7):e0219628.
13. Pruna L, Chatelin J, Pascal-Vigneron V, Kaminsky P. Regional body composition and functional impairment in patients with myotonic dystrophy. *Muscle Nerve*. 2011;44(4):503.
14. Nau KL, Dick AR, Peters K, Schloerb PR. Relative validity of clinical techniques for measuring the body composition of persons with amyotrophic lateral sclerosis. *J Neurol Sci*. 1997;152(suppl 1):S36-42.[CrossRef]
15. Visser M, Goodpaster BH, Kritchevsky SB, et al. Muscle mass, muscle strength, and muscle fat infiltration as predictors of incident mobility limitations in well-functioning older persons. *J Gerontol A Biol Sci Med Sci*. 2005;60(3):324-333.
16. Aguilera AI, Hsiao S-M, Tsai Y-C, et al. Association of fluid status and body composition with physical function in patients with chronic kidney disease. *PLoS One*. 2016;11(10):e0165400.
17. Yeung CHC, Au Yeung SL, Fong SSM, Schooling CM. Lean mass, grip strength and risk of type 2 diabetes: a bi-directional Mendelian randomisation study. *Diabetologia*. 2019;62(5):789-799.
18. Ten Haaf DSM, Eijsvogels TMH, Bongers C, et al. Protein supplementation improves lean body mass in physically active older adults: a randomized placebo-controlled trial. *J Cachexia Sarcopenia Muscle*. 2019;10(2):298-310.
19. Jeppesen TD, Schwartz M, Olsen DB, et al. Aerobic training is safe and improves exercise capacity in patients with mitochondrial myopathy. *Brain*. 2006;129(12):3402-3412.
20. Bates MG, Newman JH, Jakovljevic DG, et al. Defining cardiac adaptations and safety of endurance training in patients with m.3243A>G-related mitochondrial disease. *Int J Cardiol*. 2013;168(4):3599-3608.
21. Cruz-Jentoft AJ, Bahat G, Bauer J, et al. Sarcopenia: revised European consensus on definition and diagnosis. *Age Ageing*. 2019;48(1): 16-31.
22. Hiona A, Leeuwenburgh C. The role of mitochondrial DNA mutations in aging and sarcopenia: implications for the mitochondrial vicious cycle theory of aging. *Exp Gerontol*. 2008;43(1): 24-33.
23. Chang SF, Lin PL. Systematic literature review and meta-analysis of the association of sarcopenia with mortality. *Worldviews Evid Based Nurs*. 2016;13(2):153-162.
24. Rinninella E, Pizzoferrato M, Cintoni M, Servidei S, Mele MC. Nutritional support in mitochondrial diseases: the state of the art. *Eur Rev Med Pharmacol Sci*. 2018;22(13):4288-4298.
25. Zweers H, Janssen MC, Leij S, Wanten G. Patients with mitochondrial disease have an inadequate nutritional intake. *JPEN J Parenter Enteral Nutr*. 2018;42(3):581-586.
26. Zweers H, Smit D, Leij S, Wanten G, Janssen MCH. Individual dietary intervention in adult patients with mitochondrial disease due to the m.3243A>G mutation: the DINAMITE study, a randomized controlled trial. *Nutrition*. 2019;69:110544.
27. de Laat P, Zweers HEE, Knuijt S, Smeitink JAM, Wanten GJA, Janssen MCH. Dysphagia, malnutrition and gastrointestinal problems in patients with mitochondrial disease caused by the m3243A>G mutation. *Neth J Med*. 2015;73(1):30-36.
28. Dodds RM, Syddall HE, Cooper R, et al. Grip strength across the life course: normative data from twelve British studies. *PLoS One*. 2014;9(12):e113637.
29. Jensen GL, Cederholm T, Correia M, et al. GLIM criteria for the diagnosis of malnutrition: a consensus report from the global clinical nutrition community. *JPEN J Parenter Enteral Nutr*. 2019;43(1):32-40.
30. Jones CJ, Rikli RE, Beam WC. A 30-s chair-stand test as a measure of lower body strength in community-residing older adults. *Res Q Exerc Sport*. 1999;70(2):113-119.
31. Tyson S, Connell L. The psychometric properties and clinical utility of measures of walking and mobility in neurological conditions: a systematic review. *Clin Rehabil*. 2009;23(11):1018-1033.
32. Engel-Hoek L, Knuijt S, Gerven MHJC, et al. The 6-min mastication test: a unique test to assess endurance of continuous chewing, normal values, reliability, reproducibility and usability in patients with mitochondrial disease. *J Oral Rehabil*. 2017;44(3):155-162.
33. Hangartner TN, Warner S, Braillon P, Jankowski L, Shepherd J. The official positions of the international society for clinical densitometry: acquisition of dual-energy x-ray absorptiometry body composition and considerations regarding analysis and repeatability of measures. *J Clin Densitom*. 2013;16(4):520-536.
34. Kyle UG, Bosaeus I, De Lorenzo AD, et al. Bioelectrical impedance analysis? Part I: review of principles and methods. *Clin Nutr*. 2004;23(5):1226-1243.
35. Dey DK, Bosaeus I, Lissner L, Steen B. Body composition estimated by bioelectrical impedance in the Swedish elderly. Development of population-based prediction equation and reference values of fat-free mass and body fat for 70- and 75-y olds. *Eur J Clin Nutr*. 2003;57(8):909-916.
36. Cederholm T, Bosaeus I, Barazzoni R, et al. Diagnostic criteria for malnutrition - An ESPEN Consensus Statement. *Clin Nutr*. 2015;34(3):335-340.
37. Okorodudu DO, Jumean MF, Montori VM, et al. Diagnostic performance of body mass index to identify obesity as defined by body adiposity: a systematic review and meta-analysis. *Int J Obes*. 2010;34(5):791-799.

38. Ottery F. Patient-generated subjective global assessment. In: McCallum PPC, ed. *The Clinical Guide to Oncology Nutrition*. The American Dietetic Association: Chicago; 2000:11-23.
39. Baumgartner RN, Wayne SJ, Waters DL, Janssen I, Gallagher D, Morley JE. Sarcopenic obesity predicts instrumental activities of daily living disability in the elderly. *Obes Res*. 2004;12(12):1995-2004.
40. Schutz Y, Kyle UU, Pichard C. Fat-free mass index and fat mass index percentiles in Caucasians aged 18–98 y. *Int J Obes Relat Metab Disord*. 2002;26(7):953-960.
41. Legrand D, Adriaensen W, Vaes B, Mathei C, Wallemacq P, Degryse J. The relationship between grip strength and muscle mass (MM), inflammatory biomarkers and physical performance in community-dwelling very old persons. *Arch Gerontol Geriatr*. 2013;57(3):345-351.
42. Aitkens S, Kilmer DD, Wright NC, McCrory MA. Metabolic syndrome in neuromuscular disease. *Arch Phys Med Rehabil*. 2005;86(5):1030-1036.
43. WHO. Waist Circumference and Waist-Hip Ratio Report of a WHO Expert Consultation. 2008.