


A ticket-based public transport pricing model for Switzerland

Other Conference Item**Author(s):**

Hörl, Sebastian; [Molloy, Joseph](#) 

Publication date:

2019-05

Permanent link:

<https://doi.org/10.3929/ethz-b-000342816>

Rights / license:

[In Copyright - Non-Commercial Use Permitted](#)

Funding acknowledgement:

167189 - Big data transport models: The example of road pricing (SNF)

A ticket-based public transport pricing model for Switzerland

Sebastian Hörl
Joe Molloy

STRC 2019

15-17 May 2019, Ascona



Eidgenössische Technische Hochschule Zürich
Swiss Federal Institute of Technology Zurich

Idea

- Costs for public transport travels are crucial for transport research:
 - Preparation of surveys
 - Analysis of choice experiments
 - Transport simulation
- We would like to:
 - Impute current costs into existing data (Microcensus 2015 !)
 - Extend pricing with future schemes

Current state

- Calculates single trip costs
- Calculates daily costs (like a “check-in” app)

- Includes all public transport authorities (Verbünde) with single/daily tickets or distance tariff, and SBB
- Provides a matching between HAFAS station IDs and transport authority zones

- Does **not** include subscriptions (except Halbtax), special fares (SBB), short distance (Kurzstrecke) and regions with only monthly or annual subscriptions

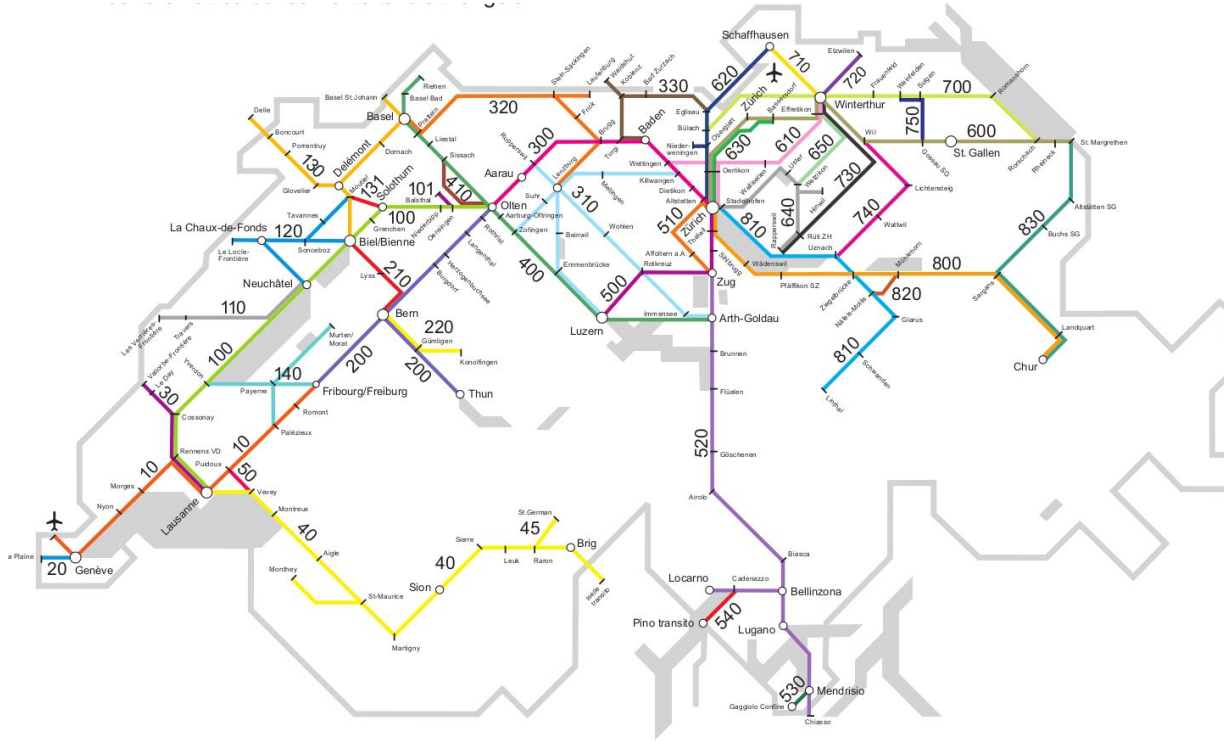
Model outline

1. Data preparation
 - a. Digitalization of T603 (SBB distance tariff)
 - b. Digitalization of T651 (Verbundtarife)
 - c. Matching of HAFAS station ID to transport authority and zone
 - d. Digitalization of tickets

2. Cost calculator
 - a. Routing through SwissRailRaptor
 - b. Separation of price-relevant trip stages
 - c. Combinatorial optimization of potential tickets

Data preparation

Data preparation: T603



Tariff T603

1. Find triangles
2. Find distance
3. Calculate price

Data preparation: T603

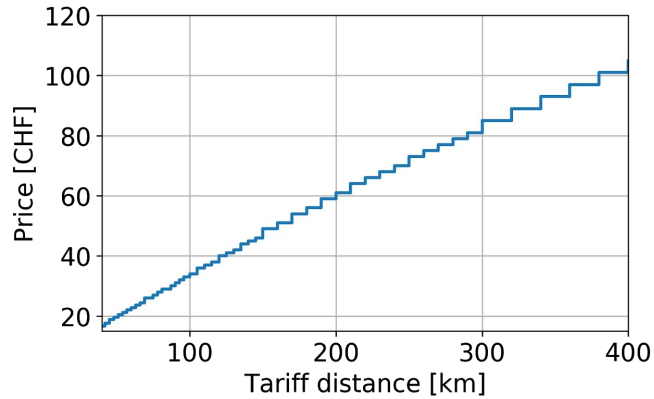
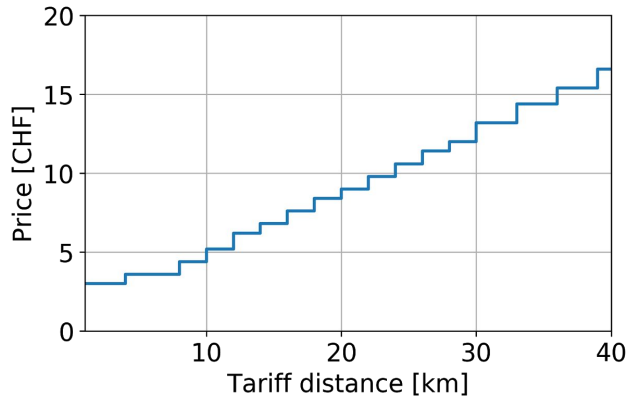
Olten 00218

4 Dulliken 02110
7 3 Däniken 02111
9 5 2 Schönenwerd SO 02112
16 9 6 4 **Aarau** 02113
22 15 12 10 6 Rupperswil 02114
25 18 15 13 9 3 Wildegg 02115
26 19 16 14 10 4 1 Holderbank AG 02128
29 22 19 17 13 7 4 3 Schinznach Bad 02116
36 29 26 24 20 14 9 8 5 **Brugg AG** 00309
40 33 30 28 24 18 13 12 9 4 Turgi 03503
45 38 35 33 29 23 18 17 14 9 5 **Baden** 03504
50 43 40 38 34 28 20 19 16 11 7 2 Wettingen 03505
50 43 40 38 34 28 21 20 17 12 8 3 1 Neuenhof 03511
54 47 44 42 38 32 24 23 20 15 11 6 4 3 Killwangen-Spreitenbach 03506
59 52 49 47 43 37 29 28 25 20 16 11 9 8 5 Dietikon 03508
61 54 51 49 45 39 31 30 27 22 18 13 11 10 7 2 Glanzenberg 03512
63 56 53 51 47 41 33 32 29 24 20 15 13 12 9 4 2 Schlieren 03509
66 59 56 54 50 44 36 35 32 27 23 18 16 15 12 7 5 3 Zürich Altstetten 03001
68 61 58 56 52 46 38 37 34 29 25 20 18 17 14 9 7 5 2 Zürich Hardbrücke 03020
80 73 70 68 64 54 46 45 42 37 33 28 26 19 16 11 9 7 4 2 **Zürich HB** 03000

Tariff T603

1. Find triangles
2. Find distance
3. Calculate price

Data preparation: T603



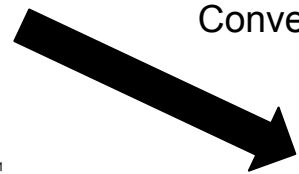
Tariff T603

1. Find triangles
2. Find distance
3. Calculate price

* Not 100% exact (difference +/-1 CHF)

Data preparation: T603

```
Olten 00218
4 Dulliken 02110
7 3 Däniken 02111
9 5 2 Schönenwerd SO 02112
16 9 6 4 Aarau 02113
22 15 12 10 6 Rapperswil 02114
25 18 15 13 9 3 Wildegg 02115
26 19 16 14 10 4 1 Holderbank AG 02128
29 22 19 17 13 7 4 3 Schinznach Bad 02116
36 29 26 24 20 14 9 8 5 Brugg AG 00309
40 33 30 28 24 18 13 12 9 4 Turgi 03503
45 38 35 33 29 23 18 17 14 9 5 Baden 03504
50 43 40 38 34 28 20 19 16 11 7 2 Wettingen 03505
50 43 40 38 34 28 21 20 17 12 8 3 1 Neuenhof 03511
54 47 44 42 38 32 24 23 20 15 11 6 4 3 Killwangen-Spreitenbach 03506
59 52 49 47 43 37 29 28 25 20 16 11 9 8 5 Dietikon 03508
61 54 51 49 45 39 31 30 27 22 18 13 11 10 7 2 Glanzenberg 03512
63 56 53 51 47 41 33 32 29 24 20 15 13 12 9 4 2 Schlieren 03509
66 59 56 54 50 44 36 35 32 27 23 18 16 15 12 7 5 3 Zürich Altstetten 03001
68 61 58 56 52 46 38 37 34 29 25 20 18 17 14 9 7 5 2 Zürich Hardbrücke 03020
80 73 70 68 64 54 46 45 42 37 33 28 26 19 16 11 9 7 4 2 Zürich HB 03000
```



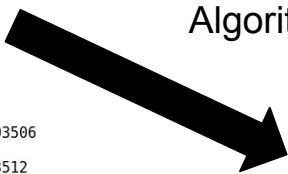
Convert PDF to text (Linux `pdftotext`)

```
Olten 00218
4 Dulliken 02110
7 3 Däniken 02111
9 5 2 Schönenwerd SO 02112
16 9 6 4 Aarau 02113
22 15 12 10 6 Rapperswil 02114
25 18 15 13 9 3 Wildegg 02115
26 19 16 14 10 4 1 Holderbank AG 02128
29 22 19 17 13 7 4 3 Schinznach Bad 02116
36 29 26 24 20 14 9 8 5 Brugg AG 00309
40 33 30 28 24 18 13 12 9 4 Turgi 03503
45 38 35 33 29 23 18 17 14 9 5 Baden 03504
50 43 40 38 34 28 20 19 16 11 7 2 Wettingen 03505
50 43 40 38 34 28 21 20 17 12 8 3 1 Neuenhof 03511
54 47 44 42 38 32 24 23 20 15 11 6 4 3 Killwangen-Spreitenbach 03506
59 52 49 47 43 37 29 28 25 20 16 11 9 8 5 Dietikon 03508
61 54 51 49 45 39 31 30 27 22 18 13 11 10 7 2 Glanzenberg 03512
63 56 53 51 47 41 33 32 29 24 20 15 13 12 9 4 2 Schlieren 03509
66 59 56 54 50 44 36 35 32 27 23 18 16 15 12 7 5 3 Zürich Altstetten 03001
68 61 58 56 52 46 38 37 34 29 25 20 18 17 14 9 7 5 2 Zürich Hardbrücke 03020
80 73 70 68 64 54 46 45 42 37 33 28 26 19 16 11 9 7 4 2 Zürich HB 03000
```

Data preparation: T603

```
Olten 00218
 4 Dulliken 02110
 7 3 Däniken 02111
 9 5 2 Schönenwerd SO 02112 ←
16 9 6 4 Aarau 02113
22 15 12 10 6 Rapperswil 02114
25 18 15 13 9 3 Wildeggen 02115
26 19 16 14 10 4 1 Holderbank AG 02128
29 22 19 17 13 7 4 3 Schinznach Bad 02116
36 29 26 24 20 14 9 8 5 Brugg AG 00309
40 33 30 28 24 18 13 12 9 4 Turgi 03503
45 38 35 33 29 23 18 17 14 9 5 Baden 03504
50 43 40 38 34 28 20 19 16 11 7 2 Wettingen 03505
50 43 40 38 34 28 21 20 17 12 8 3 1 Neuenhof 03511
54 47 44 42 38 32 24 23 20 15 11 6 4 3 Killwangen-Spreitenbach 03506
59 52 49 47 43 37 29 28 25 20 16 11 9 8 5 Dietikon 03508
61 54 51 49 45 39 31 30 27 22 18 13 11 10 7 2 Glanzenberg 03512
63 56 53 51 47 41 33 32 29 24 20 15 13 12 9 4 2 Schlieren 03509
66 59 56 54 50 44 36 35 32 27 23 18 16 15 12 7 5 3 Zürich Altstetten 03001
68 61 58 56 52 46 38 37 34 29 25 20 18 17 14 9 7 5 2 Zürich Hardbrücke 03020
80 73 70 68 64 54 46 45 42 37 33 28 26 19 16 11 9 7 4 2 Zürich HB 03000
```

Algorithm to read triangles in Python



Digitalized T603

- all stations incl. **HAFAS ID**
- all triangle connections

Data preparation: T603

```
Olten 00218
 4 Dulliken 02110
 7 3 Däniken 02111
 9 5 2 Schönenwerd SO 02112 ←
16 9 6 4 Aarau 02113
22 15 12 10 6 Rupperswil 02114
25 18 15 13 9 3 Wildeggen 02115
26 19 16 14 10 4 1 Holderbank AG 02128
29 22 19 17 13 7 4 3 Schinznach Bad 02116
36 29 26 24 20 14 9 8 5 Brugg AG 00309
40 33 30 28 24 18 13 12 9 4 Turgi 03503
45 38 35 33 29 23 18 17 14 9 5 Baden 03504
50 43 40 38 34 28 20 19 16 11 7 2 Wettingen 03505
50 43 40 38 34 28 21 20 17 12 8 3 1 Neuenhof 03511
54 47 44 42 38 32 24 23 20 15 11 6 4 3 Killwangen-Spreitenbach 03506
59 52 49 47 43 37 29 28 25 20 16 11 9 8 5 Dietikon 03508
61 54 51 49 45 39 31 30 27 22 18 13 11 10 7 2 Glanzenberg 03512
63 56 53 51 47 41 33 32 29 24 20 15 13 12 9 4 2 Schlieren 03509
66 59 56 54 50 44 36 35 32 27 23 18 16 15 12 7 5 3 Zürich Altstetten 03001
68 61 58 56 52 46 38 37 34 29 25 20 18 17 14 9 7 5 2 Zürich Hardbrücke 03020
80 73 70 68 64 54 46 45 42 37 33 28 26 19 16 11 9 7 4 2 Zürich HB 03000
```

Algorithm to read triangles in Python

Problem: T603 from December 2018 does not include distance triangles anymore!

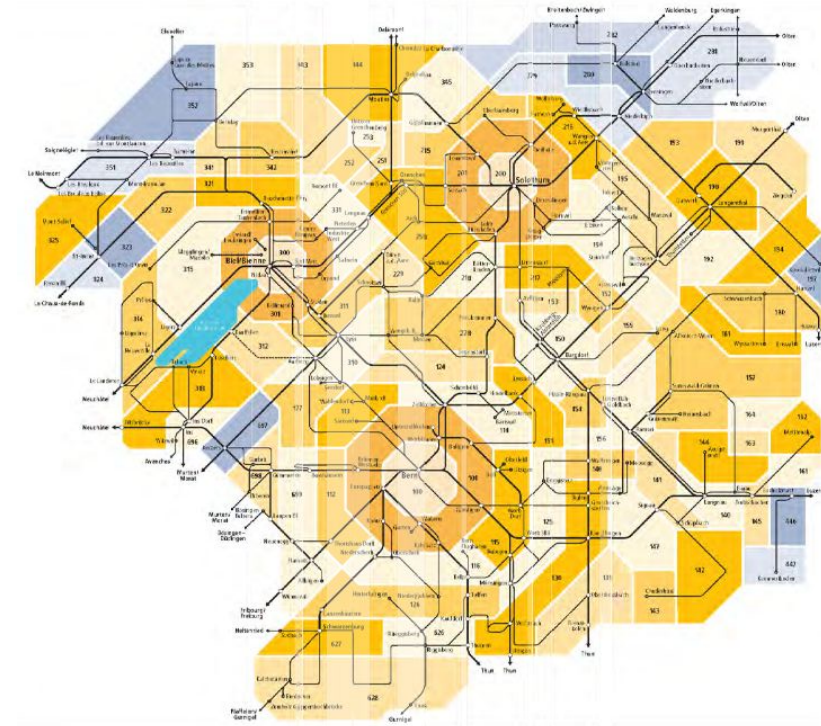
Digitalized T603

- all stations incl. **HAFAS ID**
- all triangle connections

Data preparation: T651

Tariff T651

- One per transport authority
- Defines zones, ticket types and prices
- Many contain a list of stations and their zones, some don't



Data preparation: T651

Haltestelle	Zone	Entwerter	Haltestelle	Zone	Entwerter
A	Zone	Entwerter			
Aarau	510		Aarau, Tannerstrasse	510	510AaTa
Aarau Rohr, Gemeindehaus	510	510RoGe	Aarau, Tellzentrum	510	510AaTe
Aarau Rohr, Quellhölzli	510	510RoQu	Aarau, Wallerplatz	510	510AaWa
Aarau Rohr, Rigistrasse	510	510RoRi	Aarau, Wasserfluhweg	510	510AaWf
Aarau Rohr, Salamatt	510	510RoSa	Aarau, Wöschnauring	510	510AaWö
Aarau Rohr, Unterdorf	510	510RoUd	Aarau, Zelglistrasse	510	510AaZe
Aarau Torfeld	510	510AaTo	Aarburg, Alter Friedhof	520	520AaAf
Aarau, Aarenau	510	510AaAr	Aarburg, Höhe	520	520AaHö
Aarau, Aarepark	510	510AaAa	Aarburg, Kloosmatte	520	520AaKl
Aarau, Achenbergstrasse	510	510AaAc	Aarburg, Längacker	520	520AaLä
Aarau, Allmendweg	510	510AaAl	Aarburg, Stadtgarten	520	520AaSg
Aarau, Alte Badanstalt	510	510AaAb	Aarburg, Städtli	520	520AaSt
Aarau, Bavaria	510	510AaBa	Aarburg-Ofringen	520/521	
Aarau, Berufsschule	510	510AaBe	Abtwil AG, Auwerstrasse	535	535AbAu
			Abtwil AG, Hofmatt	535	535AbHo

A-Welle

Data preparation: T651

Haltestelle	Zone	Entwerter
A	Zone	Entwerter
Aarau	510	
Aarau Rohr, Gemeindehaus	510	510RoGe
Aarau Rohr, Quellhölzli	510	510RoQu
Aarau Rohr, Rigistrasse	510	510RoRi
Aarau Rohr, Salamatt	510	510RoSa
Aarau Rohr, Unterdorf	510	510RoUd
Aarau Torfeld	510	510AaTo
Aarau, Aarenau	510	510AaAr
Aarau, Aarepark	510	510AaAa
Aarau, Achenbergstrasse	510	510AaAc
Aarau, Allmendweg	510	510AaAl
Aarau, Alte Badanstalt	510	510AaAb
Aarau, Bavaria	510	510AaBa
Aarau, Berufsschule	510	510AaBe

15.2.0.000	Zone
1	
31 Décembre	10
A	
Acacias	10
Acacias (F)	82
Aéroport	10
Aigues - Vertes	10
Aire	10
Aire - la - Ville	10
Alpes	10
Amandolier	10
Ancienne	10
Ancienne - Douane	87
Anières - Chavannes	10
Anières - Douane	10
Anières - Foyer	10
Anières - Gravière	10
Anières - Mairie	10
Anières - Village	10
Annemasse Gare	82
Appia	10
Arande	84
Arare	10
Archamps - Centre de convention	84
Archamps - Communauté-Communes	84
Archamps - Pont de Combe	84
Archamps - Technopole	84
Arena - Halle 7	10
Armes	10
Athenaz-Ecole	10
Athenaz - Village	10
Athénée	10

A-Welle

Unireso

Data preparation: T651

Haltestelle	Zone	Entwerter
A	Zone	Entwerter
Aarau	510	
Aarau Rohr, Gemeindehaus	510	510RoGe
Aarau Rohr, Quellhölzli	510	510RoQu
Aarau Rohr, Rigistrasse	510	510RoRi
Aarau Rohr, Salamatt	510	510RoSa
Aarau Rohr, Unterdorf	510	510RoUd
Aarau Torfeld	510	510AaTo
Aarau, Aarenau	510	510AaAr
Aarau, Aarepark	510	510AaAa
Aarau, Achenbergstrasse	510	510AaAc
Aarau, Allmendweg	510	510AaAl
Aarau, Alte Badanstalt	510	510AaAb
Aarau, Bavaria	510	510AaBa
Aarau, Berufsschule	510	510AaBe

A-Welle

Unireso

15.2.0.000	Zone
1	
31 Décembre	
A	
Acacias	
Acacias (F)	
Aéroport	
Aigues - Vertes	
Aire	
Aire - la - Ville	
Alpes	
Amandolier	
Ancienne	
Ancienne - Douane	
Anières - Chavannes	
Anières - Douane	
Anières - Foyer	
Anières - Gravière	
Anières - Mairie	
Anières - Village	
Annemasse Gare	
Appia	
Arande	
Arare	
Archamps - Centre de convention	
Archamps - Communauté-Commur	
Archamps - Pont de Combe	
Archamps - Technopole	
Arena - Halle 7	
Armes	10
Athenaz-Ecole	10
Athenaz - Village	10
Athénée	10

Arrêts	Zone	ETC	Oblitération
A			
AREUSE	11	TRN-tn	11Areuse
AREUSE-CHANELAZ	11	TRN-tn	11ARCH
AUVERNIER GARE	10	SBB	AUV
AUVERNIER GARE	10	TRN-tn	
AUVERNIER PACOTTE	10	TRN-tn	
AUVERNIER TN	10	TRN-tn	10auv
Arrêts	Zone	ETC	Oblitération
B			
BEMONT NE RESTAURANT	32	PAG	32Bémon
BEMONT NE SUR-LE-PONT	32	PAG	32SurPo
BEVAIX ANCIENNE POSTE	11	TRN-tn	11BVAP
BEVAIX CENTRE	11	TRN-tn	BVCEN
BEVAIX CHAUVIGNY	11	TRN-tn	CHAUV
BEVAIX GARE	11	SBB	BV

Onde Verte

Data preparation: T651

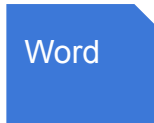
Haltestelle	Zone	Entwerter	Haltestelle
A	Zone	Entwerter	
Aarau	510		Aarau, Tanne
Aarau Rohr, Gemeindehaus	510	510RoGe	Aarau, Tellze
Aarau Rohr, Quellhölzli	510	510RoQu	Aarau, Waller
Aarau Rohr, Rigistrasse	510	510RoRi	Aarau, Wass
Aarau Rohr, Salamatt	510	510RoSa	Aarau, Wöschl
Aarau Rohr, Unterdorf	510	510RoUd	Aarburg, Zelgli
Aarau Torfeld	510	510AaTo	Aarburg, Alte
Aarau, Aarenau	510	510AaAr	Aarburg, Höh
Aarau, Aarepark	510	510AaAa	Aarburg, Kloc
Aarau, Achenbergstrasse	510	510AaAc	Aarburg, Län
Aarau, Allmendweg	510	510AaAl	Aarburg, Stad
Aarau, Alte Badanstalt	510	510AaAb	Aarburg, Städ
Aarau, Bavaria	510	510AaBa	Aarburg-Oftri
Aarau, Berufsschule	510	510AaBe	Abtwil AG, Au

15.2.0.000	Zone
1	
31 Décembre	
A	
Acacias	
Acacias (F)	
Aéroport	
Aigues - Vertes	
Aire	
Aire - la - Ville	
Alpes	
Amandolier	
Ancienne	
Ancienne - Douane	
Anières - Chavannes	
Anières - Douane	
Anières - Foyer	
Anières - Gravière	
Anières - Mairie	
Anières - Village	
Annemasse Gare	
Appia	
Arande	
Arare	
Archamps - Centre de convention	
Archamps - Communauté-Commur	
Archamps - Pont de Combe	
Archamps - Technopole	
Arena - Halle 7	
Armes	10
Athenaz-Ecole	10
Athenaz - Village	10
Athénée	10

Arrêts	Zone	ETC	Oblitération
A			
AREUSE	11	TRN-tn	11Areuse
AREUSE-CHANELAZ	11	TRN-tn	11ARCH
AUVERNIER GARE	10	SBB	AUV
AUVERNIER GARE	10	TRN-tn	
AUVERNIER PACOTTE	10	TRN-tn	
AUVERNIER TN	10	TRN-tn	10auv
Arrêts	Zone	ETC	Oblitération
B			
BEMONT NE RESTAURANT	32	PAG	32Bémon
BEMONT NE SUR-LE-PONT	32	PAG	32SurPo
BEVAIX ANCIENNE POSTE	11	TRN-tn	11BVAP
BEVAIX CENTRE	11	TRN-tn	BVCEN
BEVAIX CHAUVIGNY	11	TRN-tn	CHAUV
BEVAIX GARE	11	SBB	BV

A-Welle

Unireso



TVSZ

Mobilis



Onde Verte

Data preparation: T651

Haltestelle	Zone	Entwerter
A	Zone	Entwerter
Aarau	510	
Aarau Rohr, Gemeindehaus	510	510RoGe
Aarau Rohr, Quellhölzli	510	510RoQu
Aarau Rohr, Rigistrasse	510	510RoRi
Aarau Rohr, Salamatt	510	510RoSa
Aarau Rohr, Unterdorf	510	
Aarau Torfeld	510	
Aarau, Aarenau	510	
Aarau, Aarepark	510	
Aarau, Achenbergstrasse	510	
Aarau, Allmendweg	510	
Aarau, Alte Badanstalt	510	510AaAd
Aarau, Bavaria	510	510AaBa
Aarau, Berufsschule	510	510AaBe

Haltestelle	Zone	Entwerter
Aarau, Tanne		
Aarau, Tellze		
Aarau, Waller		
Aarau, Wass		
Aarau, Wösch		
Aarau, Zelglis		
Aarau, Alte		
Abtwil AG, Ab		
Abtwil AG, H		
Anières - Gravière		
Anières - Mairie		
Anières - Village		
Annemasse Gare		
Appia		
Arande		
Arare		
Archamps - Centre de convention		
Archamps - Communauté-Commur		
Archamps - Pont de Combe		
Archamps - Technopole		
Arena - Halle 7		
Armes	10	
Athenaz-Ecole	10	
Athenaz - Village	10	
Athénée	10	

Arrêts	Zone	ETC	Oblitération
A			
AREUSE	11	TRN-tn	11Areuse
AREUSE-CHANELAZ	11	TRN-tn	11ARCH
AUVERNIER GARE	10	SBB	AUV
AUVERNIER GARE	10	TRN-tn	
AUVERNIER PACOTTE	10	TRN-tn	10auv

	Zone	ETC	Oblitération
BEMONT NE RESTAURANT	32	PAG	32Bémon
BEMONT NE SUR-LE-PONT	32	PAG	32SurPo
BEVAIX ANCIENNE POSTE	11	TRN-tn	11BVAP
BEVAIX CENTRE	11	TRN-tn	BVCEN
BEVAIX CHAUVIGNY	11	TRN-tn	CHAUV
BEVAIX GARE	11	SBB	BV

Missing: TNW and Arcobaleno

A-Welle

Unireso

Word

TVSZ


Excel

Mobilis

Onde Verte

Data preparation: T651

 A-Welle
Engadin Mobil
Frimobil
 Libero
Mobilis
 OndeVerte
Ostwind
Passepartout
 Transreno
TVSZ
TVZG
 Unireso
ZVV



Individual scripts
Mostly regular expressions

Digitalized T651

- names of all stations
- transport authorities of stations
- tariff zones of stations

Data preparation: T651

 A-Welle
Engadin Mobil
Frimobil
 Libero
Mobilis
 OndeVerte
Ostwind
Passepartout
 Transreno
TVSZ
TVZG
 Unireso
ZVV


Individual scripts
Mostly regular expressions

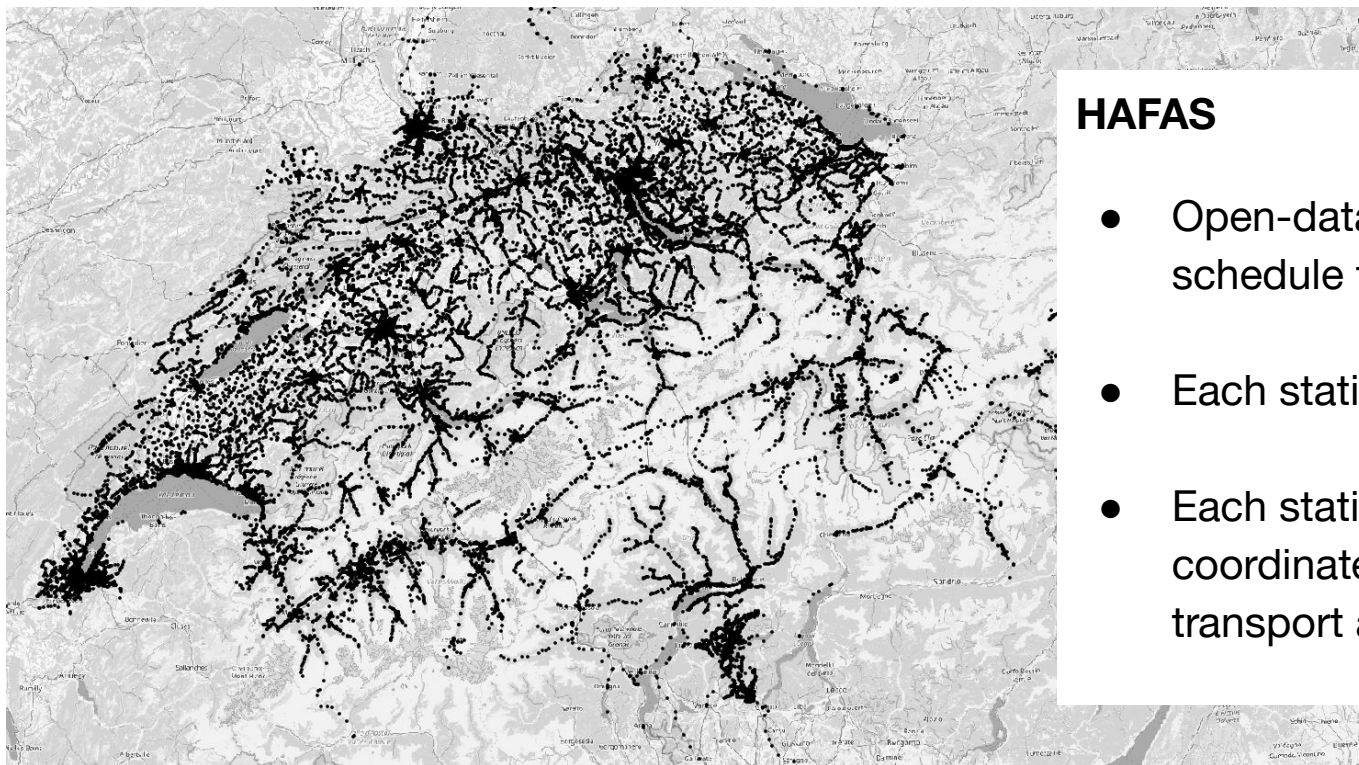
Digitalized T651

- names of all stations
- transport authorities of stations
- tariff zones of stations

But ...

- ... no HAFAS IDs
- ... no coordinates!

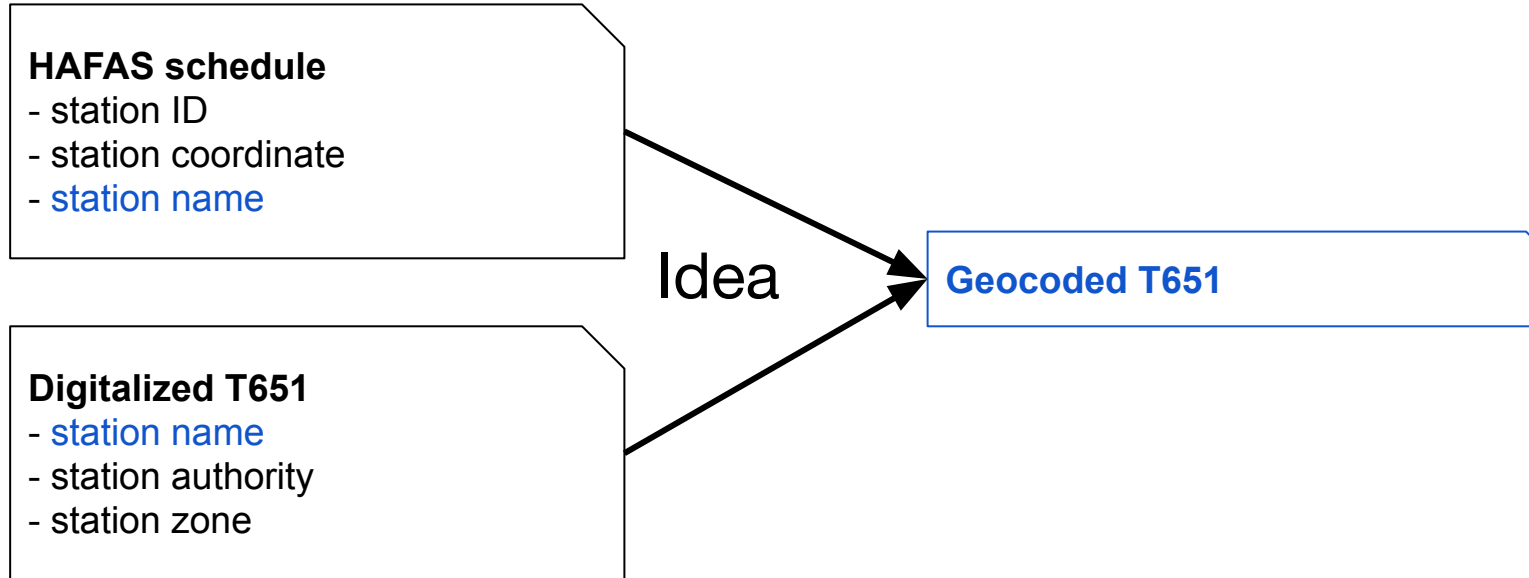
Data preparation: HAFAS



HAFAS

- Open-data public transport schedule for Switzerland
- Each station has unique ID
- Each station has name and coordinate, but no zone or transport authority!

Data preparation: HAFAS Matching

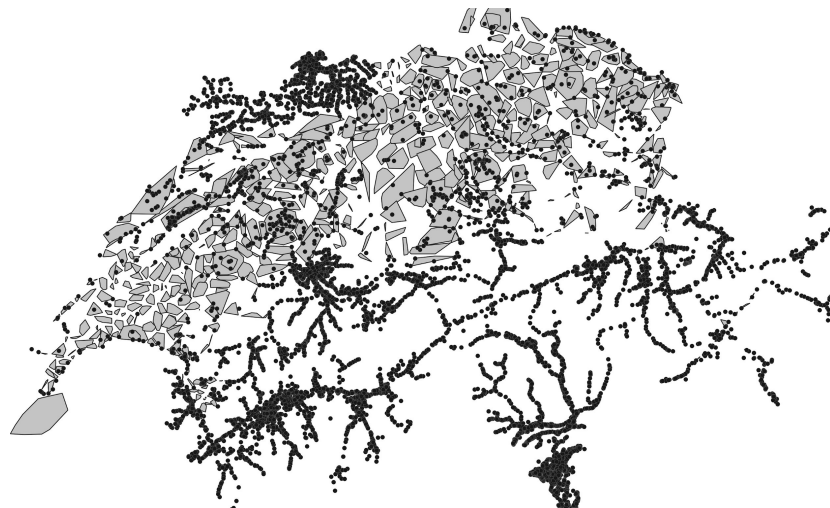


Data preparation: HAFAS Matching

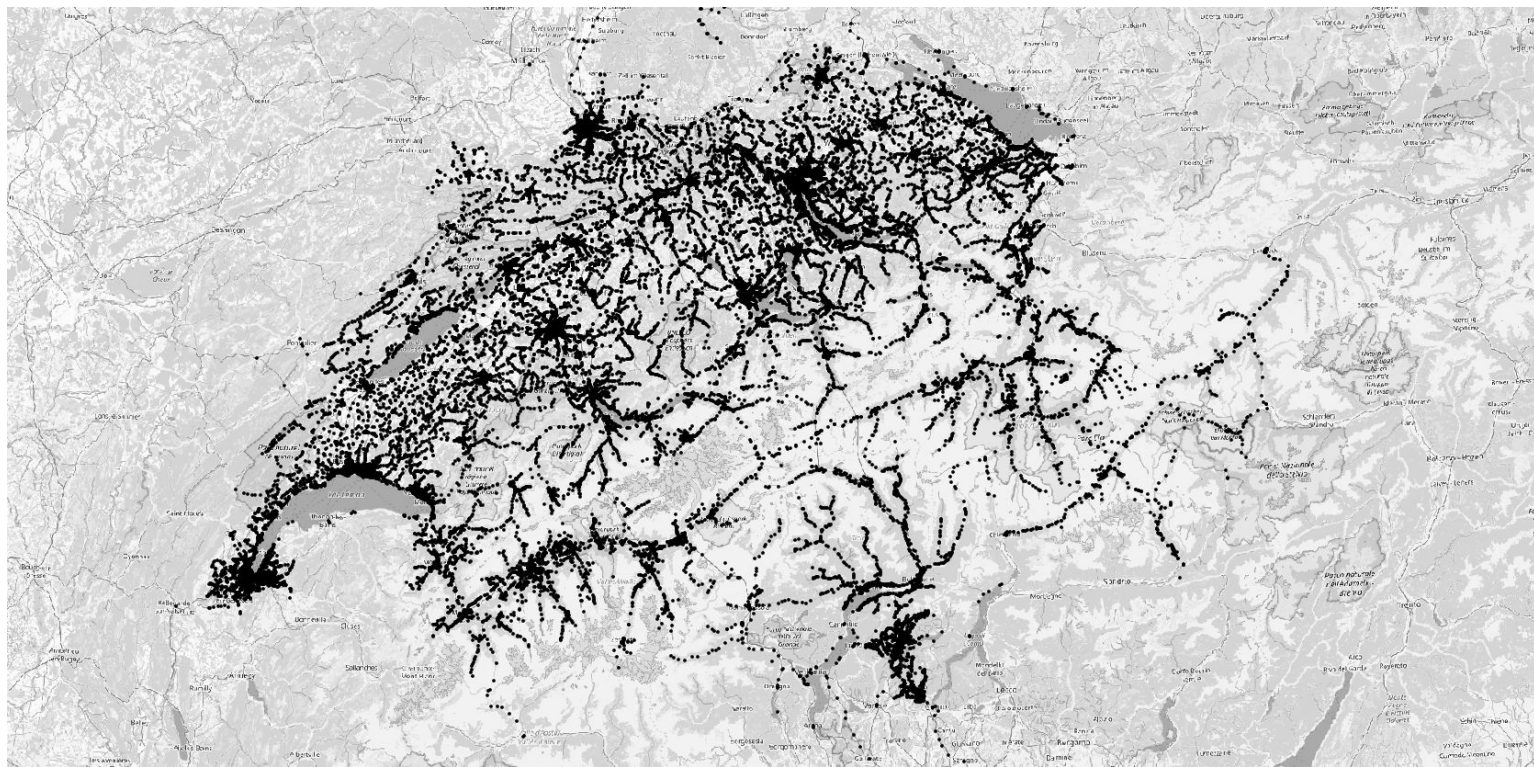
1. Match on normalised names
 - lower case with punctuation removed
 - Matched 60.5% of stations
 - > 10,000 unmatched stations - **too many to match manually**
2. Fuzzy matching
 - In Unireso Tarifverbund remove suburb name - ie. ~~Genève~~, Nations
 - Token sort ratio
 - Best match taken from matches within 20km of zone centroid where score > 85%
 - 9301 unmatched stations
3. Remaining HAFAS stations matched to nearest HAFAS neighbour within 400m
 - 8177 unmatched stations

Data preparation: HAFAS Matching - manual finishing

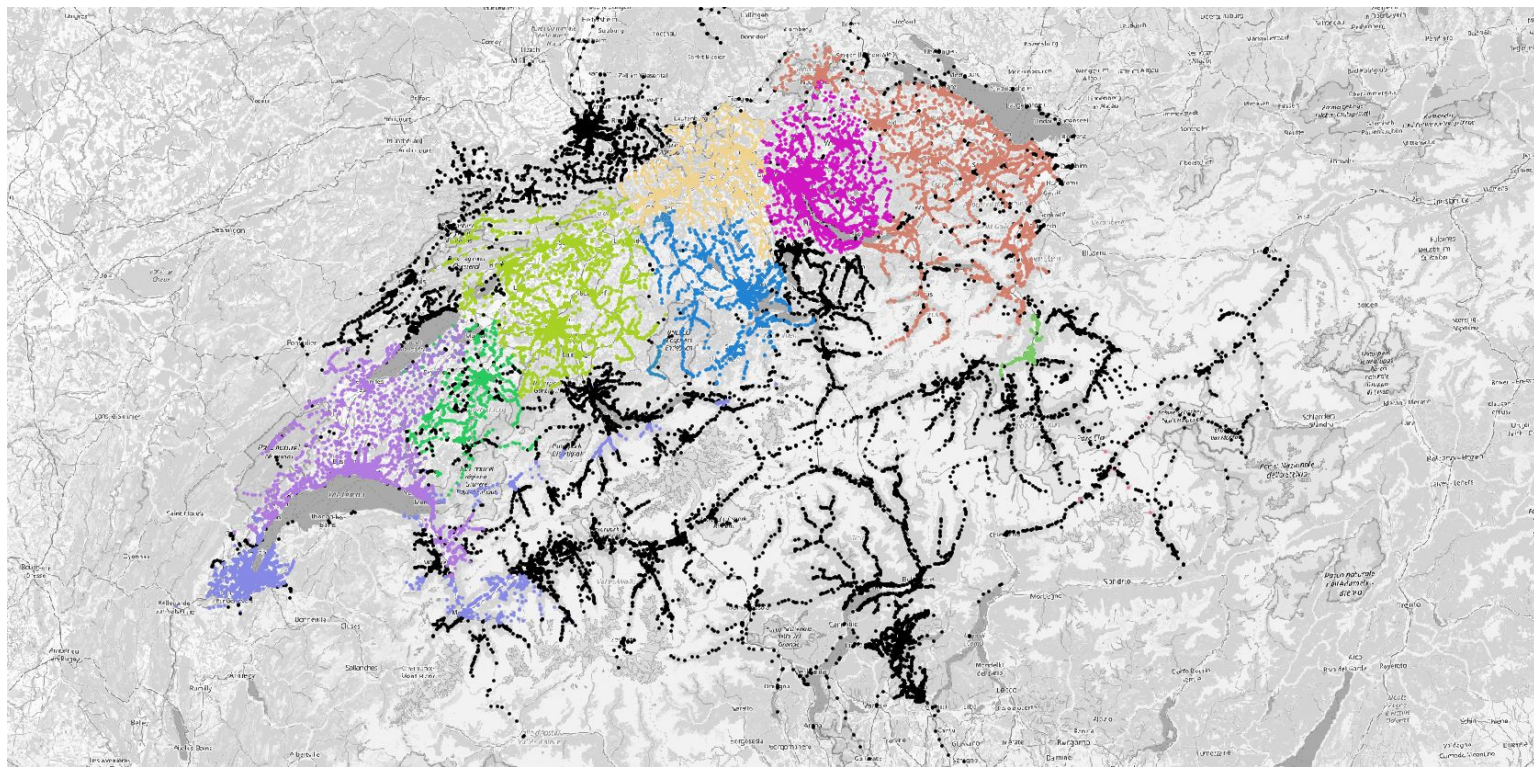
1. Identify zone areas using convex hulls
2. Manual allocation of unmatched stations with GIS software - 124 zones
3. 8053 remaining stations in non-tariff areas



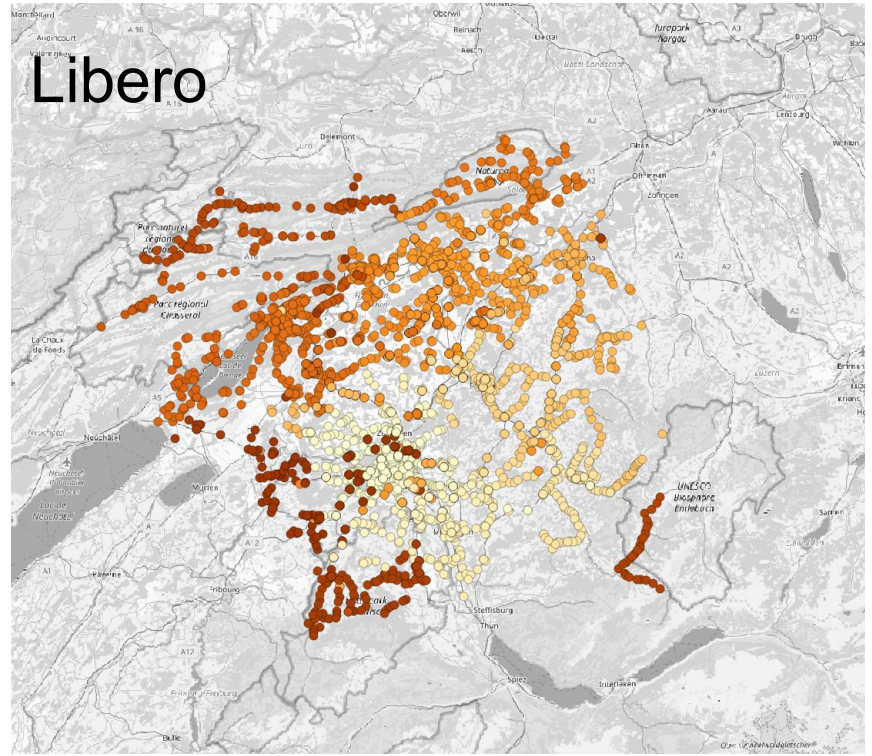
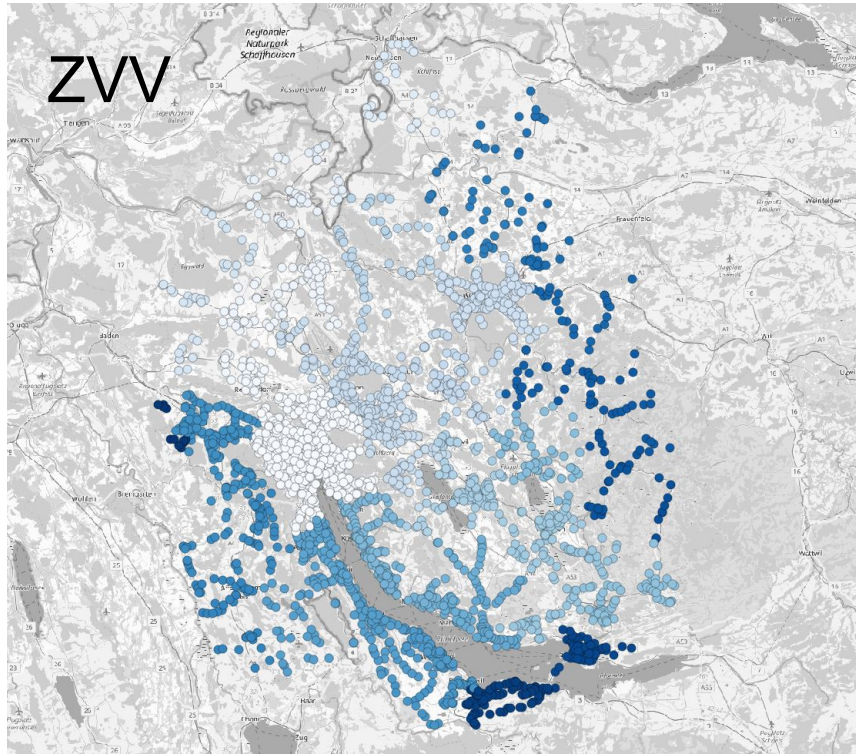
Data preparation: HAFAS Matching



Data preparation: HAFAS Matching



Data preparation: HAFAS Matching



Data preparation: Tickets

Tickets have only small set of attributes:

- **Number of zones** defines for how many zones a certain ticket is valid
- **Validity** defines for how long the ticket can be used
e.g. 1h, 2h, full day
- **Price** defines how much the tickets costs



Have been digitalized manually

	Gültigkeit	Erwachsene		Halbtax / Kinder ⓘ	
		2. Klasse	1. Klasse	2. Klasse	1. Klasse
Kurzstrecke 210	1/2h	2.40	4.20	2.20	3.80
1 Zone	1h	3.20	5.60	2.60	4.50
2 Zonen	1h	4.80	8.40	2.90	5.10
3 Zonen	1h	7.20	12.60	3.60	6.30
4 Zonen	2h	9.60	16.80	4.80	8.40
5 Zonen	2h	12.00	21.00	6.00	10.50
6 Zonen	2h	14.40	25.20	7.20	12.60
7 Zonen	2h	16.80	29.40	8.40	14.70
8 Zonen	2h	19.20	33.60	9.60	16.80
9 Zonen	2h	21.60	37.80	10.80	18.90
10 Zonen	2h	24.00	42.00	12.00	21.00
11 Zonen	2h	26.20	46.00	13.10	23.00
12 Zonen	2h	28.40	49.80	14.20	24.90
alle Zonen	3h	30.60	53.60	15.30	26.80

Source: Ostwind website

Cost calculator

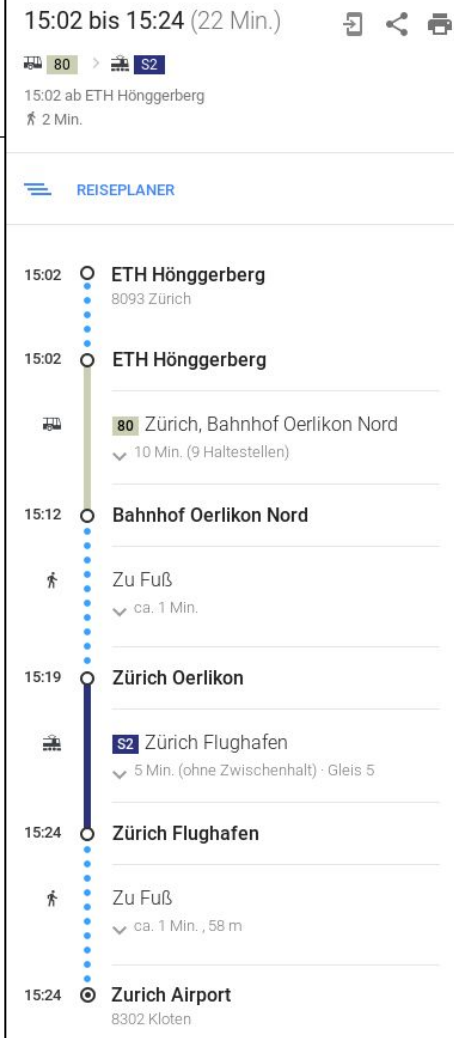
Cost calculator: SwissRailRaptor

SwissRailRaptor

- Efficient public transport router based on the RAPTOR algorithm
- Developed at SBB for MATSim simulation
- Calculates routes through HAFAS schedule given:
 - Origin coordinate
 - Destination coordinate
 - Departure time

Cost calculator: Ticket selection

1. Find all tickets that potentially cover a certain route



Cost calculator: Ticket selection

1. Find all tickets that potentially cover a certain route

Zone 110 Single
1h, 4.40 CHF

Zone 121 Single
1h, 2.70 CHF

Zone
110

Zone
120

15:02 bis 15:24 (22 Min.)

15:02 ab ETH Hönggerberg
2 Min.

REISEPLANER

15:02 ○ ETH Hönggerberg
8093 Zürich

15:02 ○ ETH Hönggerberg

80 Zürich, Bahnhof Oerlikon Nord
10 Min. (9 Haltestellen)

15:12 ○ Bahnhof Oerlikon Nord

Zu Fuß
ca. 1 Min.

15:19 ○ Zürich Oerlikon

S2 Zürich Flughafen
5 Min. (ohne Zwischenhalt) · Gleis 5

15:24 ○ Zürich Flughafen

Zu Fuß
ca. 1 Min., 58 m

15:24 ● Zurich Airport
8302 Kloten

Cost calculator: Ticket selection

1. Find all tickets that potentially cover a certain route

Zone 110 Single
1h, 4.40 CHF

Zone 121 Single
1h, 2.70 CHF

Zones 110, 121 Single
1h, 6.80 CHF

Zone
110

Zone
120

15:02 bis 15:24 (22 Min.)

15:02 ab ETH Hönggerberg
2 Min.

REISEPLANER

15:02 ○ ETH Hönggerberg
8093 Zürich

15:02 ○ ETH Hönggerberg

80 Zürich, Bahnhof Oerlikon Nord
10 Min. (9 Haltestellen)

15:12 ○ Bahnhof Oerlikon Nord

Zu Fuß
ca. 1 Min.

15:19 ○ Zürich Oerlikon

S2 Zürich Flughafen
5 Min. (ohne Zwischenhalt) · Gleis 5

15:24 ○ Zürich Flughafen

Zu Fuß
ca. 1 Min., 58 m

15:24 ● Zurich Airport
8302 Kloten

Cost calculator: Ticket selection

1. Find all tickets that potentially cover a certain route

Zone 110 Single
1h, 4.40 CHF

Zone 121 Single
1h, 2.70 CHF

Zones 110, 121 Single
1h, 6.80 CHF

Zone 110 Day
8.80 CHF

Zones 110, 121 Day
13.60 CHF

Zone
110

Zone
120

15:02 bis 15:24 (22 Min.)

REISEPLANER

15:02 ab ETH Hönggerberg
2 Min.

15:02 ○ ETH Hönggerberg
8093 Zürich

15:02 ○ ETH Hönggerberg

80 Zürich, Bahnhof Oerlikon Nord
10 Min. (9 Haltestellen)

15:12 ○ Bahnhof Oerlikon Nord

Zu Fuß
ca. 1 Min.

15:19 ○ Zürich Oerlikon

S2 Zürich Flughafen
5 Min. (ohne Zwischenhalt) - Gleis 5

15:24 ○ Zürich Flughafen

Zu Fuß
ca. 1 Min., 58 m

15:24 ● Zurich Airport
8302 Kloten

Cost calculator: Ticket selection

1. Find all tickets that potentially cover a certain route

Zone 110 Single
1h, 4.40 CHF

Zone 121 Single
1h, 2.70 CHF

Zones 110, 121 Single
1h, 6.80 CHF

Zone 110 Day
8.80 CHF

Zones 110, 121 Day
13.60 CHF

Zone
110

Zone
120

15:02 bis 15:24 (22 Min.)

REISEPLANER

15:02 ab ETH Hönggerberg
2 Min.

15:02 ETH Hönggerberg
8093 Zürich

15:02 ETH Hönggerberg

80 Zürich, Bahnhof Oerlikon Nord
10 Min. (9 Haltestellen)

15:12 Bahnhof Oerlikon Nord

Zu Fuß
ca. 1 Min.

15:19 Zürich Oerlikon

S2 Zürich Flughafen
5 Min. (ohne Zwischenhalt) - Gleis 5

15:24 Zürich Flughafen

Zu Fuß
ca. 1 Min., 58 m

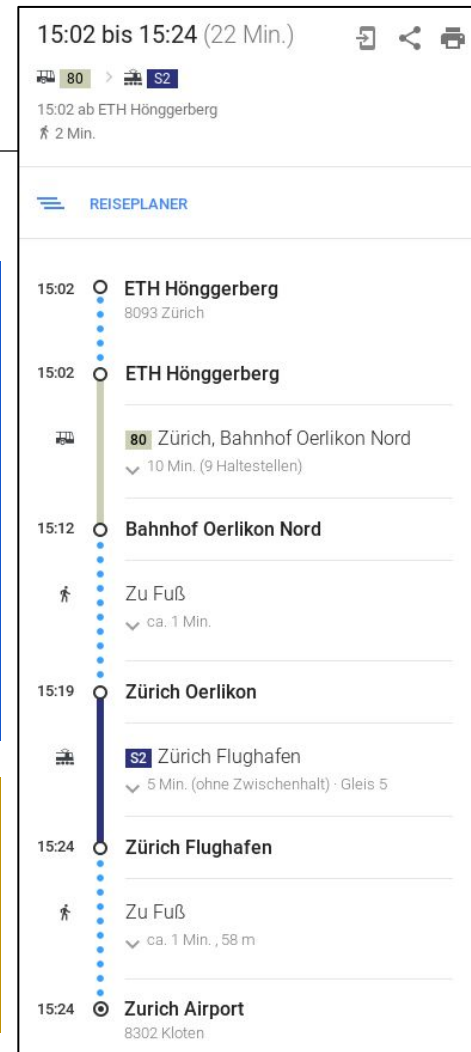
15:24 Zurich Airport
8302 Kloten

Cost calculator: Ticket selection

1. Find all tickets that potentially cover a certain route

Zone 110 Single 1h, 4.40 CHF	Zone 121 Single 1h, 2.70 CHF
Zones 110, 121 Single 1h, 6.80 CHF	
Zone 110 Day 8.80 CHF	Zones 110, 121 Day 13.60 CHF

- Whole daily chains of trips can be analyzed
- Heuristics are in place to filter out irrelevant tickets



Cost calculator: Ticket selection

2. Solve “cutting stock problem”

Decision variable: Which tickets should I buy?

Zone 110 Single
1h, 4.40 CHF

Zone 121 Single
1h, 2.70 CHF

Zones 110, 121 Single
1h, 6.80 CHF

Zone 110 Day
8.80 CHF

Zones 110, 121 Day
13.60 CHF

4.40 CHF  Not allowed,
second trip is
not covered

Zone
110

Zone
120

15:02 bis 15:24 (22 Min.)

REISEPLANER

15:02 ab ETH Hönggerberg
2 Min.

15:02 ETH Hönggerberg
8093 Zürich

15:02 ETH Hönggerberg

80 Zürich, Bahnhof Oerlikon Nord
10 Min. (9 Haltestellen)

15:12 Bahnhof Oerlikon Nord

Zu Fuß
ca. 1 Min.

15:19 Zürich Oerlikon

S2 Zürich Flughafen
5 Min. (ohne Zwischenhalt) - Gleis 5

15:24 Zürich Flughafen

Zu Fuß
ca. 1 Min., 58 m

15:24 Zurich Airport
8302 Kloten

Cost calculator: Ticket selection

2. Solve “cutting stock problem”

Decision variable: Which tickets should I buy?

Zone 110 Single 1h, 4.40 CHF	Zone 121 Single 1h, 2.70 CHF	13.60 CHF → Allowed, but expensive	Zone 110
Zones 110, 121 Single 1h, 6.80 CHF			
Zone 110 Day 8.80 CHF	Zones 110, 121 Day 13.60 CHF		

The screenshot shows a journey planner interface for a route from ETH Hönggerberg (8093 Zürich) to Zurich Airport (8302 Kloten). The route is divided into segments: 15:02-15:12 (Zone 110) from ETH Hönggerberg to Bahnhof Oerlikon Nord via Zürich, Bahnhof Oerlikon Nord; 15:12-15:19 (Zone 110) from Bahnhof Oerlikon Nord to Zürich Oerlikon via Zu Fuß; 15:19-15:24 (Zone 120) from Zürich Oerlikon to Zürich Flughafen via S2 Zürich Flughafen; and 15:24-15:24 (Zone 120) from Zürich Flughafen to Zurich Airport via Zu Fuß.

Cost calculator: Ticket selection

2. Solve “cutting stock problem”

Decision variable: Which tickets should I buy?

Zone 110 Single
1h, 4.40 CHF

Zone 121 Single
1h, 2.70 CHF

Zones 110, 121 Single
1h, 6.80 CHF

Zone 110 Day
8.80 CHF

Zones 110, 121 Day
13.60 CHF

11.20 CHF



Allowed, but
still too
expensive

Zone
110

Zone
120

15:02 bis 15:24 (22 Min.)

80 > S2

15:02 ab ETH Hönggerberg
2 Min.

REISEPLANER

15:02 ○ ETH Hönggerberg
8093 Zürich

15:02 ○ ETH Hönggerberg

80 Zürich, Bahnhof Oerlikon Nord
10 Min. (9 Haltestellen)

15:12 ○ Bahnhof Oerlikon Nord

Zu Fuß
ca. 1 Min.

15:19 ○ Zürich Oerlikon

S2 Zürich Flughafen
5 Min. (ohne Zwischenhalt) - Gleis 5

15:24 ○ Zürich Flughafen

Zu Fuß
ca. 1 Min., 58 m

15:24 ○ Zurich Airport
8302 Kloten

Cost calculator: Ticket selection

2. Solve “cutting stock problem”

Decision variable: Which tickets should I buy?


Zone 110 Single
1h, 4.40 CHF

Zone 121 Single
1h, 2.70 CHF

Zones 110, 121 Single
1h, 6.80 CHF

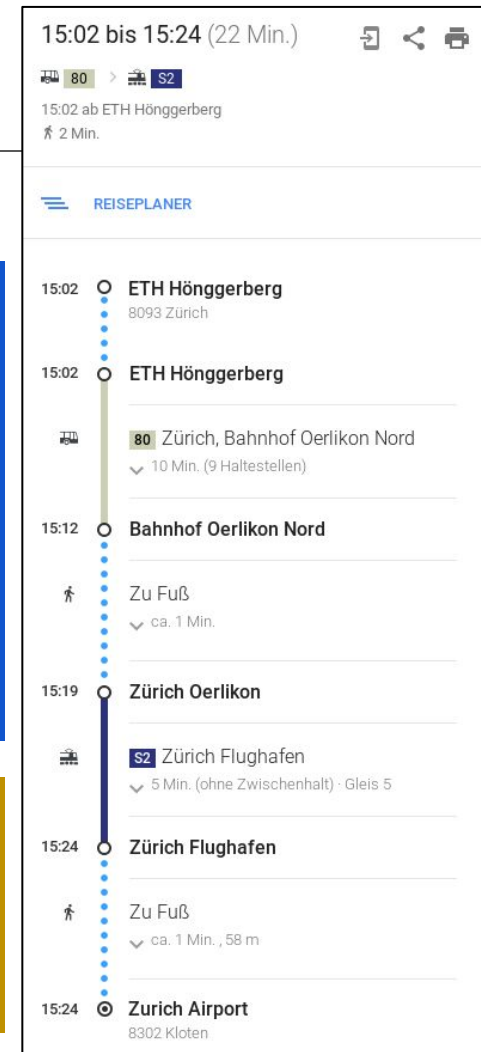
Zone 110 Day
8.80 CHF

Zones 110, 121 Day
13.60 CHF

6.80 CHF  Allowed, with minimum price

Zone 110

Zone 120



15:02 bis 15:24 (22 Min.)

80 > S2

15:02 ab ETH Hönggerberg
2 Min.

REISEPLANER

15:02 ○ ETH Hönggerberg
8093 Zürich

15:02 ○ ETH Hönggerberg

80 Zürich, Bahnhof Oerlikon Nord
10 Min. (9 Haltestellen)

15:12 ○ Bahnhof Oerlikon Nord

Zu Fuß
ca. 1 Min.

15:19 ○ Zürich Oerlikon

S2 Zürich Flughafen
5 Min. (ohne Zwischenhalt) - Gleis 5

15:24 ○ Zürich Flughafen

Zu Fuß
ca. 1 Min., 58 m

15:24 ○ Zurich Airport
8302 Kloten

Cost calculator: Ticket selection

2. Solve “cutting stock problem”

$$\begin{aligned} & \text{minimize} && \sum_t x_t \cdot p_t \\ & \text{subject to} && \sum_t c_{st} \cdot x_t > 0 \quad \forall s \in \mathcal{S} \\ & && x_t \in \{0, 1\} \\ & && c_{st} \in \{0, 1\} \end{aligned}$$

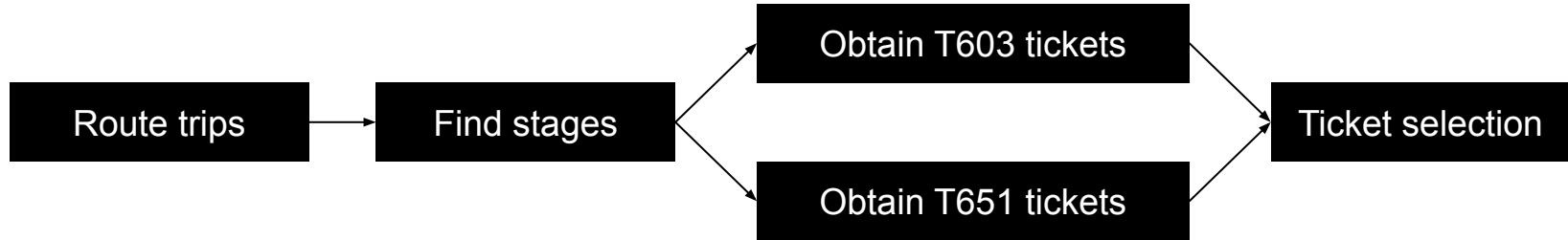
Variables

- x_t Buy ticket t yes/no ?
- p_t Price of ticket t
- c_{st} Is stage s covered by ticket t ?



Solvable with GLPK (or Gurobi, etc)

Cost calculator: Full process



Validation

- Web interface for testing
- Ongoing - which data sets are available?

Discussion

- Validation is ongoing - Do you have data sets for validation?
- Some parts missing:
 - Short-distance tickets
 - Subscriptions
 - Some authorities: TNW, Arcobaleno
- Outlook: Meta model
- Potential alternative: **NOVA**

NOVA

- Developed by SBB and transport authorities
- Publish open data (but not clear yet, what exactly)
- Several options: Public data, API for researchers, ...
- Currently in contact

Packaged up content

- Feel free to ask us for:
 - GeoJSON file mapping all HAFAS station IDs to transport authorities and their zones
 - Imputed per-trip and daily costs for Microcensus 2015 (We'd appreciate any help to validate this!)
 - Routing code, expecting a CSV like

```
plan_id;trip_id;origin_x;origin_y;destination_x;destination_y;departure_time
```

Questions?

