

# Probing the end of reionization with the near zones of $z$ greater than or similar to 6 QSOs

**Journal Article****Author(s):**

Keating, Laura C.; Haehnelt, Martin G.; Cantalupo, Sebastiano; Puchwein, Ewald

**Publication date:**

2015-11-21

**Permanent link:**

<https://doi.org/10.3929/ethz-b-000106578>

**Rights / license:**

[In Copyright - Non-Commercial Use Permitted](#)

**Originally published in:**

Monthly Notices of the Royal Astronomical Society 454(1), <https://doi.org/10.1093/mnras/stv2020>

# Probing the end of reionization with the near zones of $z \gtrsim 6$ QSOs

Laura C. Keating,<sup>1,2★</sup> Martin G. Haehnelt,<sup>1,2</sup> Sebastiano Cantalupo<sup>3</sup>  
and Ewald Puchwein<sup>1,2</sup>

<sup>1</sup>*Institute of Astronomy, University of Cambridge, Madingley Road, Cambridge CB3 0HA, UK*

<sup>2</sup>*Kavli Institute for Cosmology, University of Cambridge, Madingley Road, Cambridge CB3 0HA, UK*

<sup>3</sup>*Department of Physics, Institute for Astronomy, ETH Zurich, Wolfgang-Pauli-Strasse 27, CH-8093 Zurich, Switzerland*

Accepted 2015 August 28. Received 2015 August 11; in original form 2015 June 10

## ABSTRACT

QSO near zones are an important probe of the ionization state of the intergalactic medium (IGM) at  $z \sim 6-7$ , at the end of reionization. We present here high-resolution cosmological 3D radiative transfer simulations of QSO environments for a wide range of host halo masses,  $10^{10-12.5} M_{\odot}$ . Our simulated near zones reproduce both the overall decrease of observed near-zone sizes at  $6 < z < 7$  and their scatter. The observable near-zone properties in our simulations depend only very weakly on the mass of the host halo. The size of the H II region expanding into the IGM is generally limited by (super-)Lyman Limit systems loosely associated with (low-mass) dark matter haloes. This leads to a strong dependence of near-zone size on direction and drives the large observed scatter. In the simulation centred on our most massive host halo, many sightlines show strong red damping wings even for initial volume averaged neutral hydrogen fractions as low as  $\sim 10^{-3}$ . For QSO lifetimes long enough to allow growth of the central supermassive black hole while optically bright, we can reproduce the observed near zone of ULAS J1120+0641 only with an IGM that is initially neutral. Our results suggest that larger samples of  $z > 7$  QSOs will provide important constraints on the evolution of the neutral hydrogen fraction and thus on how late reionization ends.

**Key words:** galaxies: high-redshift – intergalactic medium – quasars: absorption lines – dark ages, reionization, first stars.

## 1 INTRODUCTION

An important unsolved problem in modern cosmology is understanding how our Universe transitioned from the ‘dark ages’, following recombination, to the ionized Universe we observe today. Despite much progress in the last decade there is still considerable uncertainty with regard to the exact timing and topology of reionization and which sources are the main contributors to the ionizing emissivity. The evolution of the Lyman  $\alpha$  (Ly  $\alpha$ ) forest and detection of a Gunn–Peterson trough bluewards of Ly  $\alpha$  suggest that the neutral fraction of the intergalactic medium (IGM) is rapidly increasing for  $z > 5.7$  (Fan et al. 2006; Becker et al. 2015). Apparent drops in the number of Lyman  $\alpha$  emitters at  $z = 6-7$  also suggest a rapidly increasing neutral fraction of hydrogen (e.g. Ouchi et al. 2010; Stark et al. 2010; Finkelstein et al. 2013; Pentericci et al. 2014). Interestingly, the latest measurements of the optical depth due to Thomson scattering from observations of the cosmic microwave background (CMB) are significantly lower than earlier measurements (Planck Collaboration XVI 2014; Planck Collaboration XIII 2015). For the rather artificial assumption of instantaneous reionization, the new

inferred reionization redshift from the latest CMB measurements is  $z_{\text{reion}} = 8.8^{+1.2}_{-1.1}$ . For more realistic extended evolutionary histories of the neutral hydrogen fraction, the new measurements suggest that reionization ends somewhat later than previously thought (Haardt & Madau 2012; Bauer et al. 2015; Chardin et al. 2015; Choudhury et al. 2015; Robertson et al. 2015).

With a number of near-infrared surveys under way to further push the redshift barrier beyond  $z \gtrsim 7$ , this makes QSO near zones a promising tool to further investigate how reionization ended. Near zones are defined as regions of transmitted flux bluewards of the Ly  $\alpha$  emission, extending from the source to the point where the flux drops below 10 per cent for the first time (Fan et al. 2006). UKIDSS, VISTA and Pan-STARRS are now returning the first discoveries of  $z \gtrsim 6.5$  quasars (Mortlock et al. 2011; Venemans et al. 2013, 2015). The near zones of these bright QSOs are a unique observational tool to study the high-redshift IGM, as they allow us to push past the redshift at which the opacity in the Ly  $\alpha$  forest becomes too large to extract detailed information (e.g. Fan et al. 2006; Carilli et al. 2010).

Carilli et al. (2010) found evidence for decreasing near-zone size with increasing redshift in the range  $5.7 < z < 6.4$ , suggesting evolution in the neutral fraction of the IGM, as well as substantial scatter in the observed near-zone sizes. This trend continues to the

\* E-mail: lck35@ast.cam.ac.uk

current highest redshift QSO, ULAS J1120+0641, at  $z = 7.085$  (see Venemans et al. 2015, Wu et al. 2015 and Reed et al. 2015 for more recent updates with additional QSOs at  $z > 6$ ).

The small near-zone size of ULAS J1120+0641, together with the possible discovery of a damping wing observed redwards of Ly  $\alpha$  transmission, also suggests that the IGM at  $z \sim 7$  may be significantly more neutral than at  $z \sim 6$  (Bolton et al. 2011; Mortlock et al. 2011), but see Bosman & Becker (2015) for a re-assessment of the significance of the evidence for suppressed Lyman  $\alpha$  emission in this QSO by a significantly neutral surrounding IGM.

The relation of the sizes of near zones to the neutral fraction of the surrounding IGM is, however, not straightforward. The size of the near zone generally underestimates the size of the H II region (e.g. Bolton & Haehnelt 2007a; Maselli et al. 2007). Maselli, Ferrara & Gallerani (2009) showed that in a sample of  $z \sim 6$  quasars, all the observed near-zones sizes appear to be due to the proximity zone around the quasar, rather than tracing the H II region. Reionization is of course not expected to be a spatially homogeneous process (Miralda-Escudé, Haehnelt & Rees 2000; Furlanetto & Oh 2005) and, as quasars may form in biased, high-density regions, the surrounding IGM may already be substantially ionized by the time the quasar turns on (Lidz et al. 2007).

It is also not clear to what extent the environment and, in particular, the mass of the host halo influence the observed properties of high-redshift QSO near zones (Lidz et al. 2007; Wyithe, Bolton & Haehnelt 2008). Unfortunately, observational constraints on the environment and host halo masses of high-redshift QSOs so far have remained inconclusive. Bañados et al. (2013) and Simpson et al. (2014) find no evidence for the overdensities that would be expected around the most massive haloes, while Morselli et al. (2014) claim to observe an overdense environment around four  $z \sim 6$  QSOs. The mass of the black hole powering ULAS J1120+0641 is estimated to be  $(2.0 \pm_{0.7}^{1.5}) \times 10^9 M_{\odot}$  (Mortlock et al. 2011). Based on high-resolution numerical simulations of the growth of galaxies and black holes in a cosmological context, it has been shown that it is possible to form a black hole of this mass by growth limited to the Eddington accretion rate from a seed of  $10^5 M_{\odot}$  at  $z \sim 15$  but these black holes will only be found in the most massive dark matter haloes (with  $M_{\text{halo}} \sim 10^{12} M_{\odot}$ ) at  $z \sim 6$  (Sijacki, Springel & Haehnelt 2009; Costa et al. 2014). Conversely, Fanidakis et al. (2013) use semi-analytic modelling allowing for super-Eddington accretion rates to suggest that luminous quasars are found in less-massive haloes; however, their modelling fails to reproduce the bright end of the high-redshift quasar luminosity function, as  $10^9 M_{\odot}$  black holes are not formed until  $z < 4$ . We therefore simulate here three different regions of the IGM at  $z = 7$ , centred on host haloes spanning a wide range of masses from  $10^{10}$  to  $10^{12} M_{\odot}$  and covering a range of environments from an average-density region to a very highly biased protocluster region.

This work follows on from the work of Bolton et al. (2011) but differs in two important respects: first, we test a range of host halo masses and environments extending to a rather large host halo mass and highly biased environments predicted by realistic models for the growth of billion solar mass black holes believed to power bright high-redshift QSOs; secondly, we use the 3D radiative transfer code RADAMESH (Radiative transfer on an ADaptive MESH; Cantalupo & Porciani 2011) which allows us to sample the near zones effectively in all directions. By choosing different background photoionization rates, we vary the initial neutral fraction of the gas in the surrounding IGM before the QSO turns on.

This paper is organized as follows. In Section 2, we describe the numerical simulations we used to model the ionization fronts around high-redshift QSOs. In Section 3, we investigate the effect of different environments and initial neutral fractions on the QSO near zones. In Section 4, we compare our simulations to the observed near zones at  $z = 6-7$  and consider how best to constrain the neutral fraction at  $z \gtrsim 6.5$ . Finally, in Section 5, we present our conclusions. We use the cosmological parameters  $h = 0.73$ ,  $\Omega_m = 0.25$ ,  $\Omega_{\Lambda} = 0.75$  and  $\Omega_b h^2 = 0.024$ . The prefixes ‘p’ and ‘c’ before distance measures refer to proper and comoving distances, respectively.

## 2 SIMULATIONS OF QSO NEAR ZONES

### 2.1 Hydrodynamical simulations of high-redshift haloes

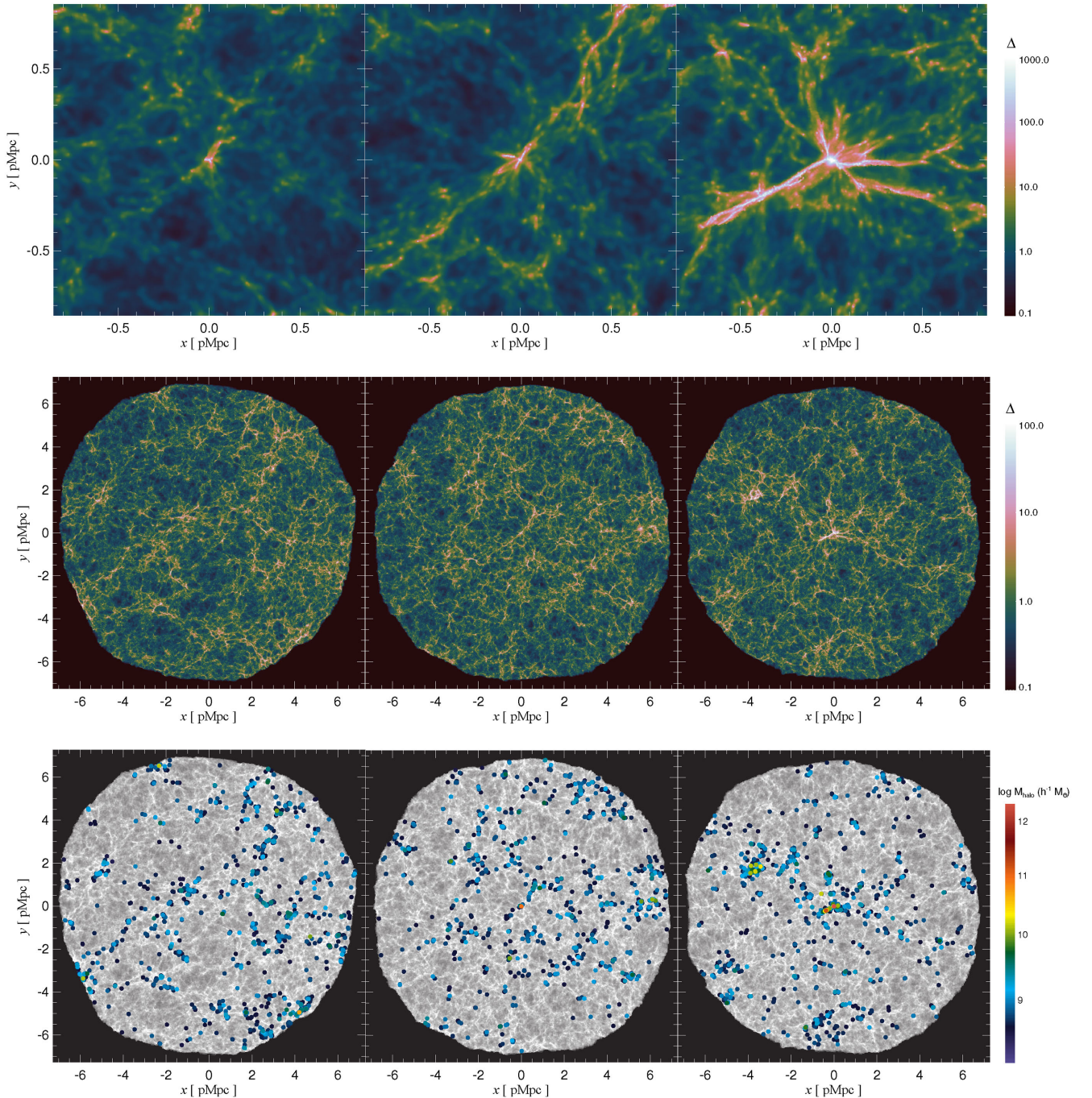
As the mass of the dark matter haloes that bright QSOs lie in at  $z \sim 6-7$  is still uncertain, we have simulated a range of cosmological environments, following the approach in Costa et al. (2014): an ‘average’ region, centred on a  $10^{10} h^{-1} M_{\odot}$  halo, an ‘intermediate’ region, centred on a  $1.7 \times 10^{11} h^{-1} M_{\odot}$  halo and an ‘overdense’ region, centred on a  $2.5 \times 10^{12} h^{-1} M_{\odot}$  halo. To model these three distinct regions, we resimulated three haloes taken from a snapshot of the Millennium Simulation (Springel et al. 2005) at  $z \sim 6$ , using the TreePM-SPH code P-GADGET3 (last described in Springel 2005). The Millennium Simulation is a dark-matter only simulation of a cube with side length  $500 h^{-1}$  Mpc run from redshift 127 up to the present time. The large volume of the simulation allows for formation of rare objects, such as the most massive halo we simulate. We used the group catalogues to select haloes of desired mass at  $z = 6$  and traced all particles in a radius around these haloes back to  $z = 127$  to generate our initial conditions. We included a factor of  $4^3$  times more particles than the parent simulation in a high-resolution region, which was also populated with gas particles. Outside this region, increasingly lower resolution dark matter particles were also simulated so as to correctly capture the large-scale tidal forces while minimizing computational cost. The spatial resolution of our simulation is a factor 3 lower than previous studies of  $z \sim 7$  near zones by Bolton et al. (2011). Unfortunately, this is an unavoidable compromise that had to be made in order to run large boxes containing the rare, massive haloes in which we are interested.

We model star formation in the same way as Viel, Haehnelt & Springel (2004), such that gas particles with density greater than 1000 times the mean baryon density and a temperature less than  $10^5$  K are turned into collisionless star particles. Simulations with this prescription have been shown to reproduce well the low-density IGM responsible for the bulk of the absorption in the high- $z$  Lyman  $\alpha$  forest, while providing increased numerical efficiency. We have also investigated a simulation with a more physically motivated star formation prescription that also included the effect of stellar and AGN feedback, which we discuss in Appendix B.

The radius of our high-resolution region is approximately  $40 h^{-1}$  comoving Mpc (the exact radius of each simulation depends on the virial radius of the halo of interest) and the mass of the gas particles is  $2.8 \times 10^6 h^{-1} M_{\odot}$ . The softening length is  $1.25 h^{-1}$  comoving kpc. The haloes contain at least 32 dark matter particles and the virial temperature of the smallest haloes is  $T_V \sim 650$  K for  $\mu = 0.61$ .

The Haardt & Madau (2012) model of the UV background was used, assuming the optically thin limit for ionizing radiation. Note that although we will later recompute the ionization state of the gas for a series of different photoionization rates, the



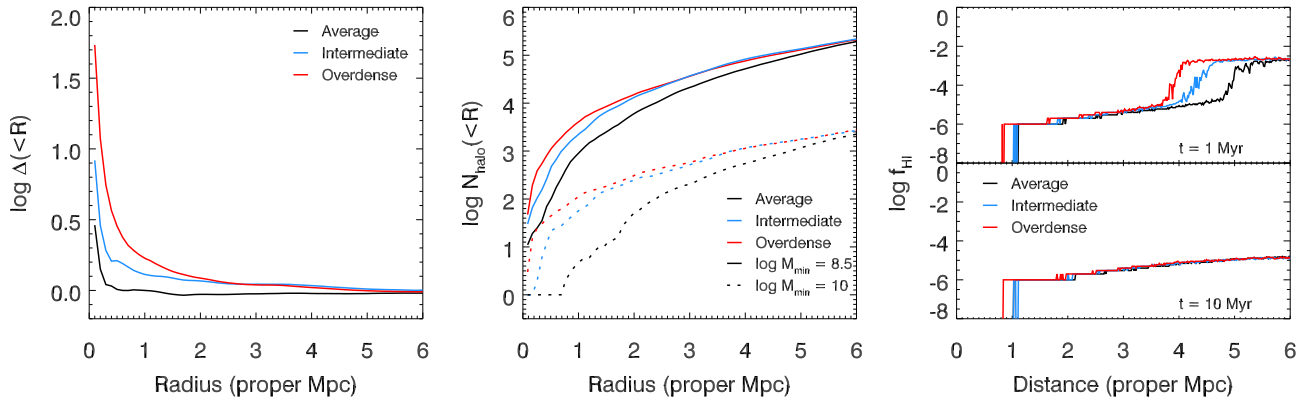


**Figure 1.** Maps of the projected overdensity for the three simulated regions at  $z = 7$ : average (left), intermediate (middle) and overdense (right). The average region contains some thin filaments as well as large voids, while the intermediate region contains more pronounced filaments and also smaller voids. The overdense region contains several prominent filaments surrounding the central massive halo. The top panel shows the  $10 h^{-1} \text{ cMpc}$  surrounding the host halo, the middle panel shows a slice through the entire region and the bottom panel shows the projected overdensity with the dark matter haloes contained in a slice of the same thickness overlaid.

change of UV background should in principle affect the temperature of the gas, an effect which we neglect when we reprocess the simulations.

Examples of the density field in the immediate vicinity of the three host haloes and in a slice through the full simulation volume are shown in the top and middle panels of Fig. 1. The average-density region is characterized by thinner filaments of gas and large voids, while the overdense region shows more prominent filaments

and higher density diffuse gas. Within the central  $2 \text{ pMpc}$ , the difference in the mean overdensity of the three regions is evident (see also the left-hand panel of Fig. 2), with the mean overdensity of the region increasing with increasing mass of the host halo as expected. Beyond this distance, the intermediate and overdense regions display similar mean densities, while the mean density of the average region remains lower until a radius of  $5 \text{ pMpc}$ . This is described more quantitatively in Table 1.



**Figure 2.** Left: overdensity within a sphere with radius specified on the horizontal axis, centred on the host halo, for the three regions. Outside the central 2 pMpc, the intermediate and overdense regions show similar densities that are still slightly above the average cosmic density, while the density of the average region lies much closer to the cosmic density at  $z = 7$ . Beyond a radius of 5 pMpc, all three regions display similar overdensities. Middle: the number of haloes above a cut-off mass  $\log M_{\text{Halo}}(h^{-1} M_{\odot}) = 8.5$  (solid line) and 10 (dotted line) contained in a sphere with radius specified on the horizontal axis for the three simulations. Right: the median neutral fraction over all sightlines for our three regions with initial volume-weighted average neutral fraction  $\langle f_{\text{HI}} \rangle_{\text{init}} = 0.02$  after 1 Myr (top panel) and 10 Myr (bottom panel).

**Table 1.** Here we list the mass of the host halo and the overdensity  $\Delta = \rho/\bar{\rho}$  (where  $\bar{\rho}$  is the critical density) of a sphere with radius 0.5 and 3 pMpc, centred on the host halo, for the three regions we simulate at  $z = 7$ .

Region	$M_{\text{Halo}}(\times 10^{12} h^{-1} M_{\odot})$	$\Delta_{r=0.5}$	$\Delta_{r=3}$
Average	0.01	1.00	0.95
Intermediate	0.17	1.63	1.11
Overdense	2.50	2.86	1.10

In the bottom panel of Fig. 1, we plot the distribution of the subhaloes in a slice with thickness 0.03 pMpc. Note that the most massive halo in the average region is not our host halo (see, for example, the  $8 \times 10^{10} h^{-1} M_{\odot}$  halo in the lower right of the bottom-left image in Fig. 1). However, in the region surrounding the host halo, the distribution of haloes is clearly different (middle panel of Fig. 2). We find that the regions centred on more massive haloes also contain more haloes of smaller masses. This is true for both haloes with masses above  $\log M_{\text{Halo}}(h^{-1} M_{\odot}) = 8.5$  and 10. Similar to the trend with overdensity in the left-hand panel of Fig. 2, we find that the number of haloes in the region is increasing with the mass of the host halo up to a radius of about 2 pMpc, after which the intermediate and overdense regions become very alike.

## 2.2 Modelling QSO ionization fronts

To calculate the neutral fraction of the gas after it is ionized by the QSO, we post-processed the simulations with the 3D radiative transfer code RADAMESH. RADAMESH is a 3D radiative transfer code, described in detail in Cantalupo & Porciani (2011). It makes use of a photon-conserving, ray-tracing approach that is adaptive in space and time. This grid-based algorithm combines elements from two common techniques for solving radiative transfer problems: the Monte Carlo approach and the method of characteristics. This scheme allows for accurate and computationally efficient solutions of the radiative transfer equation. By tracking the path of ionizing radiation over a static density field, the time evolution of the neutral hydrogen and helium fractions, as well as the temperature, can be calculated. It has been tested on the standard tests for radiative transfer codes from Iliev et al. (2006) and shown to perform well.

Fully coupling simulations of radiative transfer to the hydrodynamical simulations is a computationally expensive problem, but

fortunately for the problem considered here, this is of little relevance. For the expansion of an H II region around a luminous QSO, the relevant time-scale for the motion of the ionization front is much shorter than the hydrodynamical time-scales for the gas. We have also investigated the time-scale for photoevaporation of gas in haloes with masses equivalent to the minimum mass our simulation resolves using the method outlined in Iliev, Shapiro & Raga (2005), and find that the time for evaporation is on the order of 100 Myr for a halo with  $M_{\text{Halo}} = 10^8 h^{-1} M_{\odot}$  at a radius 10 comoving Mpc from the source. As the time interval over which we evolve the radiative transfer is much shorter than this, we do not expect photoevaporation to be an issue.

For simplicity and for computational speed, we model the initial ionization state of the IGM using a homogeneous UV background together with a self-shielding model to account for optically thick absorbers. The effect of self-shielding on the initial ionization state was implemented in post-processing using a simple self-shielding density threshold implemented similarly to Rahmati et al. (2013). Although fluctuations in the UV background are expected to be smaller at low redshift, when the mean free path of an ionizing photon is short, as expected for  $z > 6$  (e.g. Songaila & Cowie 2010), these fluctuations can become large and modelling observations with a uniform UV background can become difficult (Becker et al. 2015; Chardin et al. 2015). It would obviously be more realistic when considering the ionization state of the IGM to take into account the contribution to the ionizing background of individual sources; however, to model this correctly would add an additional level of complexity to this problem and is beyond the scope of this paper.

To perform the radiative transfer, outputs from the hydrodynamical simulations at  $z = 6$  and 7 were divided into octants and mapped on to multimesh grids, each with base grid size  $512^3$ . The grid was refined wherever 16 or more gas particles were present in a cell, resulting in four levels of refinement. Cells on the highest level of refinement had a spatial resolution of 0.95 pkpc. The initial temperature of the gas was taken from the hydrodynamical simulation. Collisional ionizations are also taken into account. Taking the same values for the properties of ULAS J1120+0641 as Bolton et al. (2011), we placed a source with ionizing photon rate  $\dot{N} = 1.3 \times 10^{57} \text{ s}^{-1}$  and spectral index  $\alpha = 1.5$  in the densest cell of the central halo. By keeping the properties of the QSO fixed and varying the mass of the host halo and the redshift, we were able to



**Table 2.** H I photoionization rates used to calculate the initial ionization state of the gas with the Rahmati et al. (2013) model for self-shielded absorbers at  $z = 6$  and 7. The volume-weighted neutral hydrogen fraction as calculated in the overdense region is also shown.

$\log \Gamma_{\text{H I}} (\text{s}^{-1})$	$\langle f_{\text{H I}}(z = 6) \rangle_{\text{init}}$	$\langle f_{\text{H I}}(z = 7) \rangle_{\text{init}}$
-17.0	$9.78 \times 10^{-1}$	$9.82 \times 10^{-1}$
-14.8	$5.21 \times 10^{-2}$	$1.11 \times 10^{-1}$
-14.3	$9.42 \times 10^{-3}$	$1.99 \times 10^{-2}$
-13.7	$1.43 \times 10^{-3}$	$2.20 \times 10^{-3}$
-12.8	$1.14 \times 10^{-4}$	$1.68 \times 10^{-4}$

estimate the effect that the mass of the host halo and the evolution of the gas distribution has on the extent of the near zones.

We consider a range of initial ionization states for the gas, giving volume-weighted initial neutral fractions ranging from  $\langle f_{\text{H I}} \rangle_{\text{init}} \sim 10^{-4}$  to 1 for the neutral fraction in the vicinity of the quasar. The photoionization rates and corresponding volume-weighted neutral fractions are summarized in Table 2. Photoionization rates for He I and He II were calculated by rescaling to match the ratios between the photoionization rates in Haardt & Madau (2012).

Ionizing UV radiation was sampled from 20 logarithmically spaced energy bins, ranging from 1 to 8 Ryd. A time-dependent, non-equilibrium chemistry solver computes the number density of six species (H I, H II, He I, He II, He III,  $e^-$ ) as well as the temperature of the gas. Recombination radiation was treated using an ‘on-the-spot’ approximation, whereby ionizing photons are absorbed in the same cell in which they were emitted (i.e. that the mean free path of the ionizing photon is smaller than the minimum length-scale resolved by our simulation) and that the photons are absorbed by the same species from which they were emitted.

We further assume the speed of light in our simulation to be infinite. Although this means that the speed that the H II region initially expands at can appear to exceed the speed of light, it can be shown that it is a good description of how the front propagates from the point of view of an observer for spectra along the line of sight (White et al. 2003; Yu 2005; Shapiro et al. 2006; Bolton & Haehnelt 2007a; Cantalupo, Porciani & Lilly 2008). The QSO lifetime  $t_Q$  that we will refer to throughout this paper is the time at which the photons were emitted from the source. This can be related to the time  $t'$  by  $t_Q = t' - R(t')/c$ , where  $R(t')$  is the distance that has been travelled in a time  $t'$  and  $c$  is the speed of light.

### 3 QSO NEAR-ZONE SIZES

#### 3.1 Evolution of the H II regions

In the top three panels of Fig. 3, we show the neutral hydrogen fraction of the gas in the three regions for three of the initial average neutral fractions we consider after  $t_Q = 1$  Myr at  $z = 7$ . In the cases with  $\langle f_{\text{H I}} \rangle_{\text{init}} = 0.002$  and 0.02 (top and second panels), there is a large scatter along different sightlines in the distance the ionization front has travelled, with expansion preferentially into the less-dense regions. This is in contrast to the ionization front modelled by Maselli et al. (2007) at  $z = 6.1$ , whose simulated H II region does not show strong deviations from a spherical ionization front. This is perhaps because our higher resolution simulations are resolving smaller, dense clumps of neutral gas that produce a shadowing effect, although this effect may become less pronounced if we included the effect of scattered photons from recombinations. In the third panel of Fig. 3, we show the case with  $\langle f_{\text{H I}} \rangle_{\text{init}} = 1.0$ . Here we find a more isotropic expansion of the ionization front

into the surrounding IGM, with little scatter in the radius of the ionization front and a generally smaller H II region. After 5 Myr (bottom panel), although the size of the H II region and its scatter have increased, the ionized region is still small compared to the top two panels.

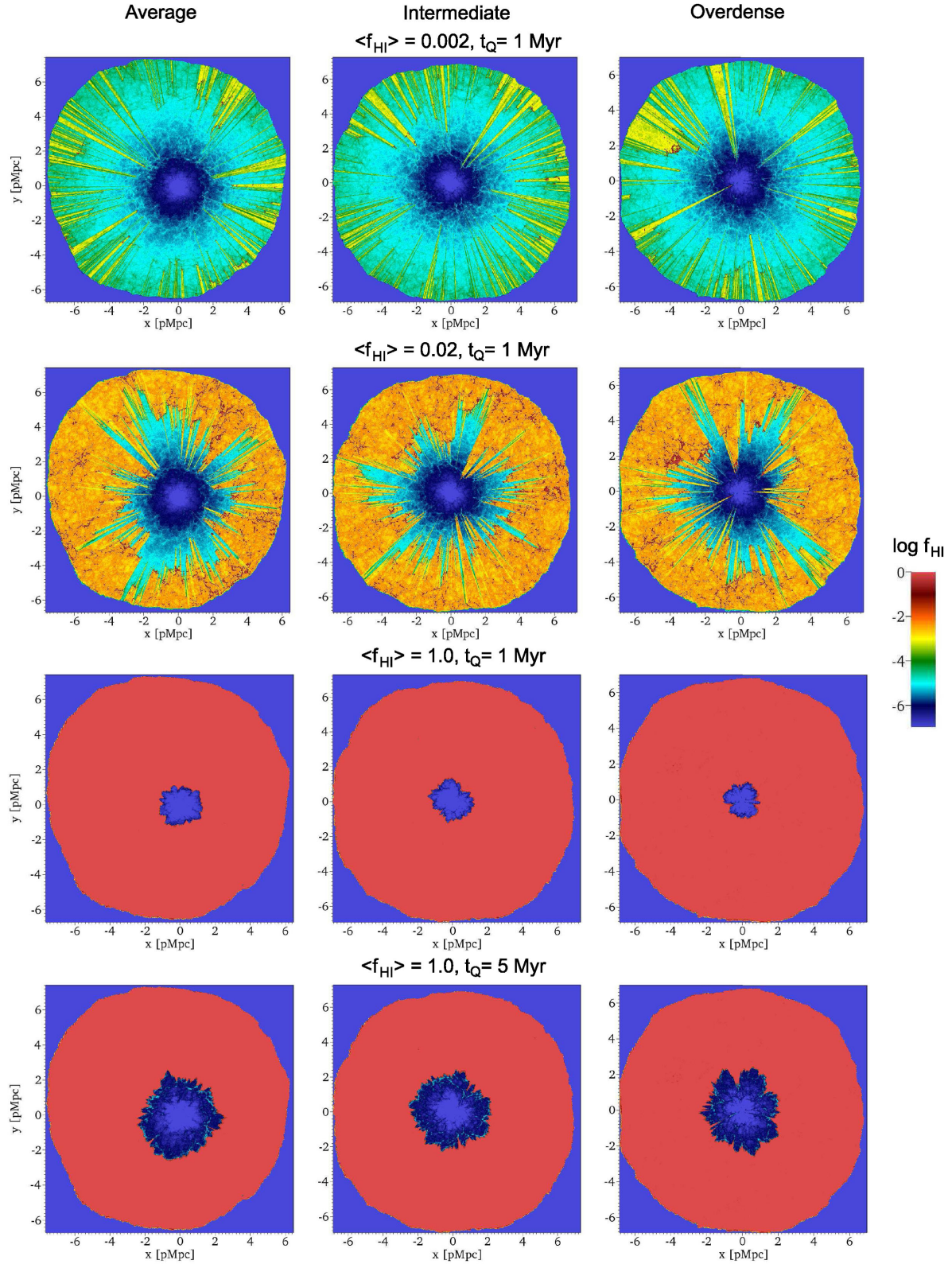
The three columns of Fig. 3 show our average (left), intermediate (middle) and overdense (right) regions. For each of the initial ionization states, the three regions display a similar maximum distance that the front has travelled and also a similar scatter. This is also shown in the right-hand panel of Fig. 2, where we plot the median neutral fraction of all sightlines for our three density fields after the quasar has been on for 1 Myr in the simulation with initial volume-weighted neutral fraction  $\langle f_{\text{H I}} \rangle_{\text{init}} = 0.02$ . Up to a neutral fraction  $\log f_{\text{H I}} \approx -5$ , there is little difference between the three regions but beyond this point, we find that the extent of the H II region increases as the density of the environment decreases. After 10 Myr, we find that the ionization front has exited the box and all three regions display similar median neutral fractions.

In the left-hand panel of Fig. 4, we plot the positions and masses of the haloes found in a slice of our simulation the same thickness as the slice over which we project the neutral fraction. Here we use a simulation of our overdense region with initial volume-weighted neutral fraction  $\langle f_{\text{H I}} \rangle_{\text{init}} = 0.02$  at  $t_Q = 1$  Myr, as the ionization front is still contained within our box at this time and for this initial neutral fraction we see a large scatter in the distance the front has travelled. We find that sometimes the progression of the ionization front appears to be impeded by the presence of a halo. This is further investigated in the middle panel of Fig. 4, where we plot the H I column density found at the edge of the ionization front against the distance that the front has travelled, coloured by the average neutral fraction. We define the edge of the front to be where the smoothed neutral fraction becomes larger than  $\log f_{\text{H I}} = -4$ . We find that the absorbers slowing the progress of the ionization front tend to be set back from the edge of the front and that we need to integrate over a wide distance of  $\pm 500 \text{ km s}^{-1}$  (or  $\pm 0.6 \text{ pMpc}$ , ignoring the contribution of peculiar velocities) around the edge of the ionization front to capture their contribution to the column density. These absorbers have H I column densities in the range  $\log N_{\text{H I}}(\text{cm}^{-2}) = 16\text{--}21$ . The self-shielding prescription results in a smooth increase of the neutral fraction of the absorbers.

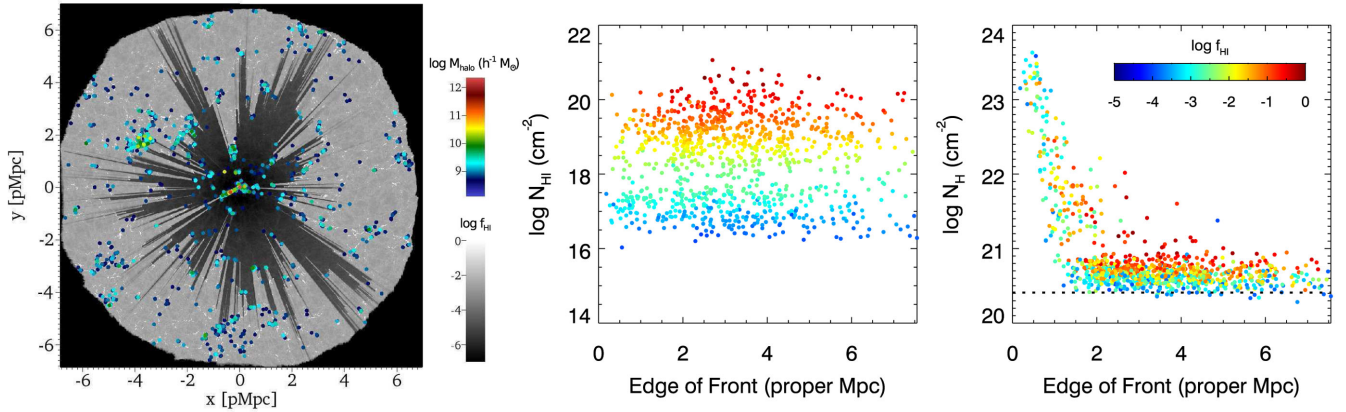
We have also looked at the total hydrogen column densities of these absorbers and find that the absorbers with the highest column densities tend to be in the central 2 pMpc of the region, surrounding the host halo. Outside this region, we find hydrogen column densities in the range  $\log N_{\text{H}}(\text{cm}^{-2}) = 20.5\text{--}21$ . At a given distance from the QSO the absorbers with the highest neutral fraction have the highest total column densities, as expected. For comparison, we plot the column density we would expect in our interval at the mean density for  $z = 7$ , which brackets the lower end of the scatter in column density that we measure.

To investigate the mass of the dark matter haloes associated with the edge of the ionization front, we found the halo closest to the point along our sightline where we define the ionization front to end. We find that the closest dark matter haloes are preferentially of low mass ( $< 10^{9.5} M_{\odot}$ , left-hand panel of Fig. 5). The distribution thereby roughly tracks the distribution of haloes as a function of mass found in our simulation with a moderate enhancement at the low-mass end. There are also a significant number of sightlines whose closest halo is the QSO host halo. These correspond to directions in which the ionization front is still trapped within the host halo after  $t_Q = 1$  Myr.

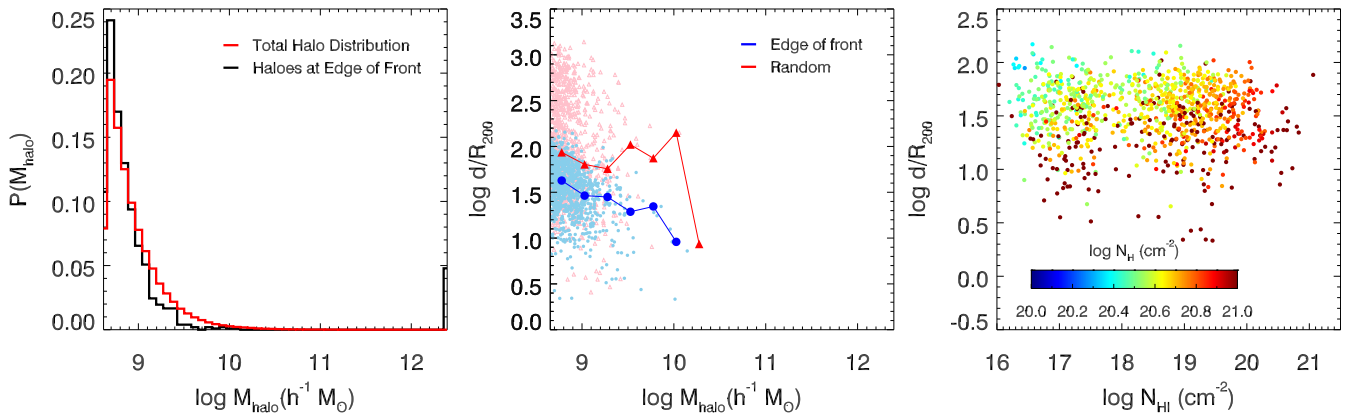
In the middle panel of Fig. 5, we examine how the distance from the edge of the front to the closest halo,  $d$ , changes as a function



**Figure 3.** Maps of the projected neutral fraction for average (left), intermediate (middle) and overdense (right) regions over a slice 0.03 pMpc thick at  $z = 7$ . The top row shows simulations after  $t_{\text{Q}} = 1$  Myr with initial volume-weighted neutral fraction  $\langle f_{\text{HI}} \rangle_{\text{init}} = 0.002$ , second row has  $\langle f_{\text{HI}} \rangle_{\text{init}} = 0.02$  and third row has  $\langle f_{\text{HI}} \rangle_{\text{init}} = 1.0$ . The fourth row has  $\langle f_{\text{HI}} \rangle_{\text{init}} = 1.0$  and is shown at  $t_{\text{Q}} = 5$  Myr. Note that this is not an instantaneous picture, but rather shows the size of the H II region that would be measured by an observer along each sightline at fixed quasar lifetime.



**Figure 4.** Left: the projected neutral fraction over a slice with thickness 0.03 pMpc for the overdense region with initial neutral fraction  $\langle f_{\text{HI}} \rangle_{\text{init}} = 0.02$ . (Sub)haloes in a slice of the same thickness found using SUBFIND are overplotted. Middle: H I column density at the position where the near zone is found over a range  $\pm 500 \text{ km s}^{-1}$  after  $t_Q = 1 \text{ Myr}$  in our overdense region with  $\langle f_{\text{HI}} \rangle_{\text{init}} = 0.02$ . The different colours represent the average neutral fraction in the interval we integrate over and the values are represented in the colour bar in the right-hand panel. Right: as before, but for total hydrogen column density. The dashed black line indicates the column density corresponding to the mean density that we would expect in this velocity interval.



**Figure 5.** Left: a histogram of the masses of the halo closest to the edge of the ionization front after  $t_Q = 1 \text{ Myr}$  in our overdense region (black line) and the masses of the dark matter haloes found in our simulation (red line). We find that the lower mass haloes tend to be found nearest to the ionization front. Middle: the distance from the edge of the ionization front to the nearest halo,  $d$ , normalized by the virial radius,  $R_{200}$ , against the mass of that halo. The blue line is the median value. The red line is the median value of data measuring the distance to the nearest halo for a random point in our simulation. The contribution from the host halo is not seen because, in that case,  $d = 0$ . Right: the distance from the edge of the front to the nearest halo  $d$ , normalized by the virial radius,  $R_{200}$ , against the H I column density in a  $\pm 500 \text{ km s}^{-1}$  range around the edge of the ionization front after  $t_Q = 1 \text{ Myr}$  in our overdense region. The points are coloured by the total hydrogen column density.

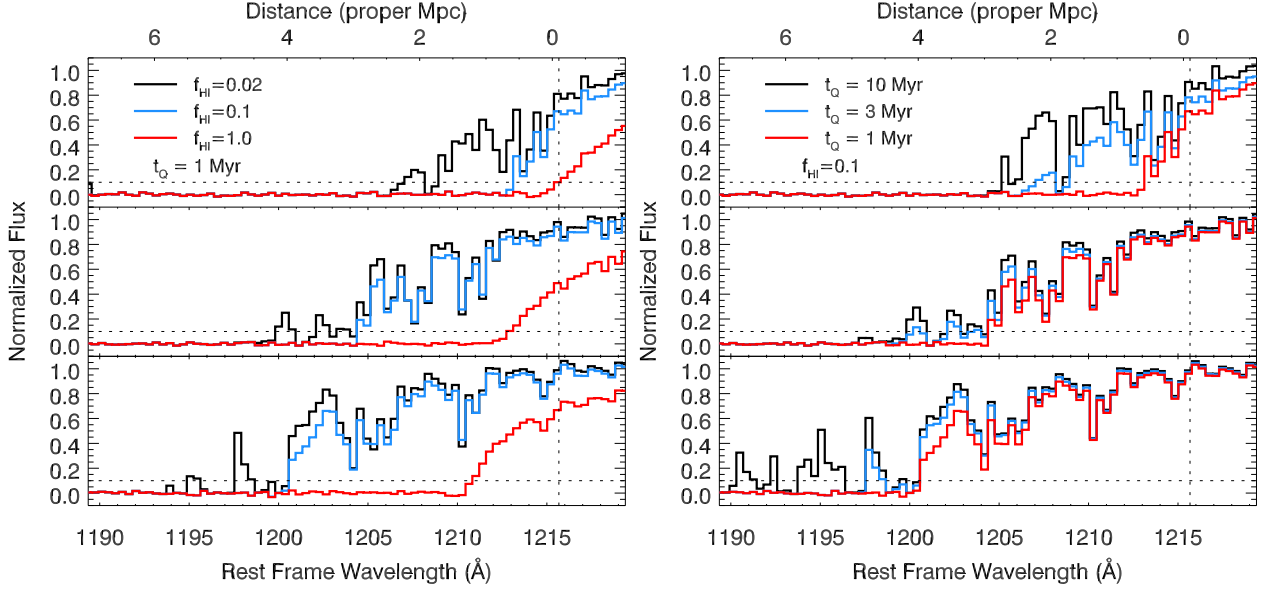
of halo mass. We normalize this distance by the virial radius  $R_{200}$ , which we define as the point where the density is equal to 200 times the mean enclosed density. We also choose random points within our simulation and found the closest dark matter halo. In this case, the median distance to the closest halo was slightly larger than this distance from the haloes to the ionization front, but we find a much larger scatter in the measured distances to the nearest halo. There is therefore only a rather loose but still significant association of the location of the ionization front and dark matter haloes, and this will depend both on where we define the point where the ionization front ends and how we choose the halo that is associated with the edge of the ionization front. We have also checked how the H I and total column density of the absorber scales with the distance to the nearest halo  $d$  (right-hand panel of Fig. 5), but find no strong trend for either quantity.

### 3.2 Synthetic spectra

We used our simulation to produce mock spectra, from which we measured the QSO near-zone sizes and compared to the observed near zones. The mock Lyman  $\alpha$  spectra were constructed with rest-frame wavelength  $\lambda_\alpha = 1215.67 \text{ \AA}$ , damping constant  $\Lambda_\alpha = 6.265 \times 10^8 \text{ s}^{-1}$  and oscillator strength  $f_\alpha = 0.4164$ . The peculiar velocity and temperature of the gas were taken into account. To make our spectra more realistic, we added noise and convolved them with a Gaussian instrument profile with an FWHM of  $240 \text{ km s}^{-1}$ .

Fig. 6 shows examples of spectra constructed along three lines of sight in our overdense region at  $z = 7$ , varying both the initial average volume-weighted neutral fraction and quasar lifetime. We find that, as expected from Fig. 3, the Ly  $\alpha$  transmission at fixed lifetime extends for longer distances in a more ionized IGM.





**Figure 6.** Left: simulated spectra through the overdense region for initial neutral fraction  $(f_{\text{HI}})_{\text{init}} = (1.0, 0.1, 0.02)$  at  $t_{\text{Q}} = 1$  Myr. Right: simulated spectra for initial neutral fraction  $(f_{\text{HI}})_{\text{init}} = 0.1$  at  $t_{\text{Q}} = (1, 3, 10)$  Myr. Each row displays a spectrum along a different sightline. The horizontal dotted line marks the point where the transmitted flux is equal to 10 per cent and the vertical dotted line marks the position of rest-frame Lyman  $\alpha$ . The spectra have been rebinned on to pixels width  $0.4 \text{ \AA}$  in the rest frame.

The spectra constructed from simulations with  $(f_{\text{HI}})_{\text{init}} = 0.02$  and  $0.1$  show broadly similar transmission inside the  $\text{H II}$  region, while the spectra from the  $(f_{\text{HI}})_{\text{init}} = 1.0$  display strong damping wings. When the initial neutral fraction is kept constant at  $(f_{\text{HI}})_{\text{init}} = 0.1$  and the QSO lifetime varied (right-hand panel of Fig. 6), we see that along some sightlines (middle and bottom panels) the front initially grows rapidly but the growth saturates already after 1 Myr. When there is a dense absorber along the sightline (top panel), saturation of the radius of the front is not yet reached even after 10 Myr. In this case, the absorber has a total hydrogen column density  $\log N_{\text{H}}(\text{cm}^{-2}) = 21.5$  (integrating over the same velocity interval as in Section 3.1). The density begins to rise rapidly after a distance  $3.4 \text{ pMpc}$  from the source (which corresponds to the edge of the ionization front) before peaking at  $3.7 \text{ pMpc}$ .

We determined the extent of the near zone along each line of sight, which, following Fan et al. (2006), we defined as the distance from the source to the point where the transmitted flux drops below 10 per cent for the first time after smoothing our spectra with a box car window of width  $20 \text{ \AA}$  in the observed frame. This smoothing reduces the effect of noise and intervening absorption lines.

### 3.3 Near zones versus proximity zones: analytic models

It is important to note that the size of the  $\text{H II}$  region is not necessarily the size of the near zone that will be observed. Bolton & Haehnelt (2007a) summarize the analytical solution for the radius of an ionization front moving into the IGM ( $R_{\text{ion}}$ ). For a source emitting  $\dot{N}$  ionizing photons per unit time, the rate of expansion of the  $\text{H II}$  region is given by

$$\frac{dR_{\text{ion}}}{dt} = \frac{\dot{N} - \frac{4}{3}\pi R_{\text{ion}}\alpha_{\text{H II}}n_{\text{H}}^2}{4\pi R_{\text{ion}}^2 f_{\text{HI}} n_{\text{H}}}, \quad (1)$$

where  $f_{\text{HI}}$  is the neutral hydrogen fraction,  $n_{\text{H}}$  is the total hydrogen number density and  $\alpha_{\text{H II}}$  is the recombination coefficient for ionized hydrogen. Note that we do not use the case A recombination rate as in Bolton & Haehnelt (2007a), but the case B recombination rate

as we are using the ‘on-the-spot’ approximation for recombination. This difference is discussed further in Section 3.4. Solving for  $R_{\text{ion}}$ , and assuming that the lifetime of the source  $t_{\text{Q}}$  is much smaller than the time-scale for recombination  $t_{\text{rec}} = (n_{\text{H}}\alpha_{\text{H II}})^{-1}$ , leads to the solution

$$R_{\text{ion}} = \frac{1.48}{(\Delta f_{\text{HI}})^{1/3}} \left( \frac{\dot{N}}{1.3 \times 10^{57} \text{ s}^{-1}} \right)^{1/3} \left( \frac{t_{\text{Q}}}{10^6 \text{ yr}} \right)^{1/3} \times \left( \frac{1+z}{8} \right)^{-1} \text{ pMpc}. \quad (2)$$

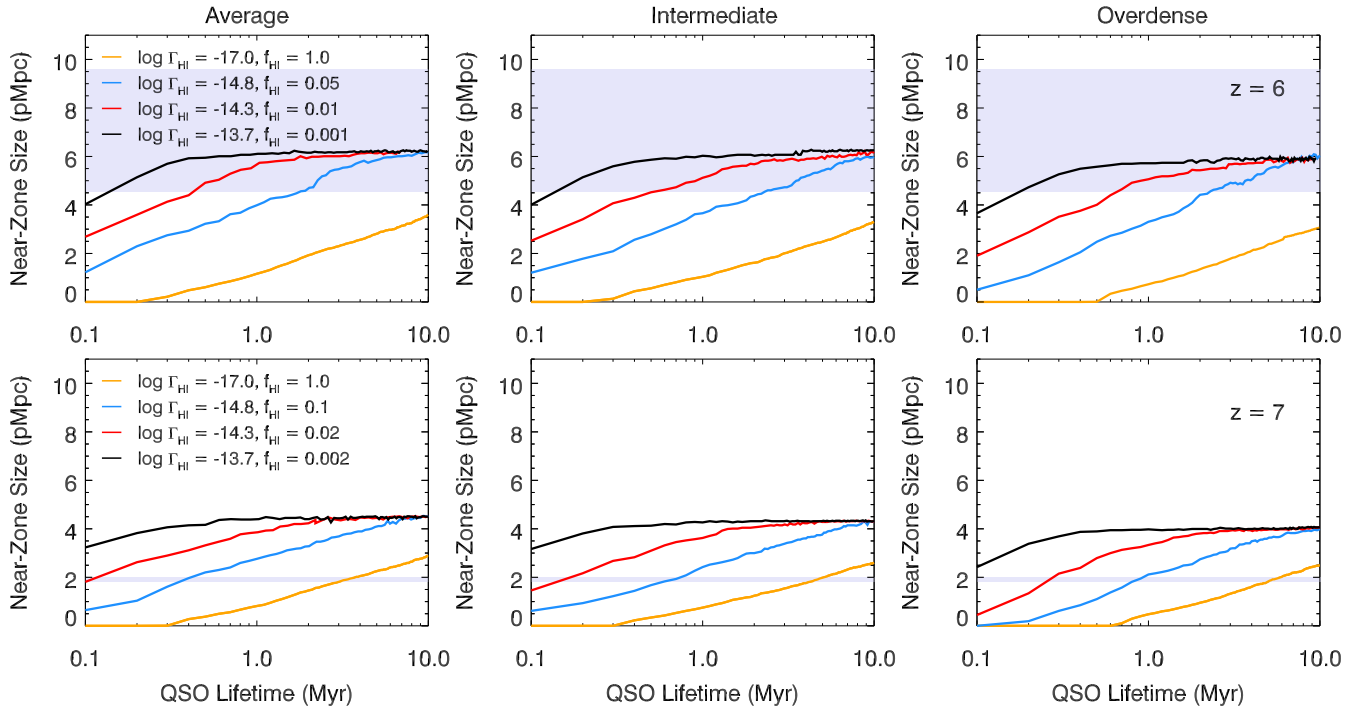
Due to residual neutral hydrogen inside the  $\text{H II}$  region, the absorption can become saturated closer to the source. By choosing the  $f_{\text{HI}}$  that corresponds to the limiting optical depth and assuming that the hydrogen gas beyond the ionization front is in ionization equilibrium, the largest observable near-zone size,  $R_{\alpha}^{\text{max}}$ , can be defined by

$$R_{\alpha}^{\text{max}} \simeq \frac{1.86}{\Delta_{\text{lim}}} \left( \frac{\dot{N}}{1.3 \times 10^{57} \text{ s}^{-1}} \right)^{1/2} \left( \frac{T}{2 \times 10^4 \text{ K}} \right)^{0.35} \times \left( \frac{\tau_{\text{lim}}}{2.3} \right)^{1/2} \left( \frac{\alpha^{-1}[\alpha + 3]}{3} \right)^{-1/2} \left( \frac{1+z}{8} \right)^{-9/4} \text{ pMpc}, \quad (3)$$

where  $\Delta_{\text{lim}}$  is the overdensity corresponding to the limiting neutral fraction of hydrogen,  $T$  is the temperature,  $\tau_{\text{lim}}$  is the optical depth detection limit and  $\alpha$  is the spectral index of the QSO. Note that this scales as  $\dot{N}^{1/2}$  rather than  $\dot{N}^{1/3}$  as before and that there is no dependence on  $f_{\text{HI}}$  or  $t_{\text{Q}}$ . We confirmed this scaling using our radiative transfer simulations for luminosities varying over a range of 1 dex below our fiducial luminosity.

### 3.4 The sizes of simulated near zones

We investigate the dependence of the near-zone size on the mass of the host halo by following the evolution of the median near-zone size



**Figure 7.** Evolution of QSO near-zone size with time for the three different density fields. Left: average, middle: intermediate, right: overdense. Top:  $z = 6$ , bottom:  $z = 7$ . In each panel, we plot a range of different initial neutral fractions. The solid line in each case is the median near-zone size we measure for the system. The shaded region in the top panels shows observed near-zone sizes, rescaled to match the luminosity of our source, in the range  $5.9 < z < 6.1$  (Carilli et al. 2010) and in the bottom panels it shows the estimate for the near-zone size of the  $z = 7.085$  QSO ULAS J1120+0641.

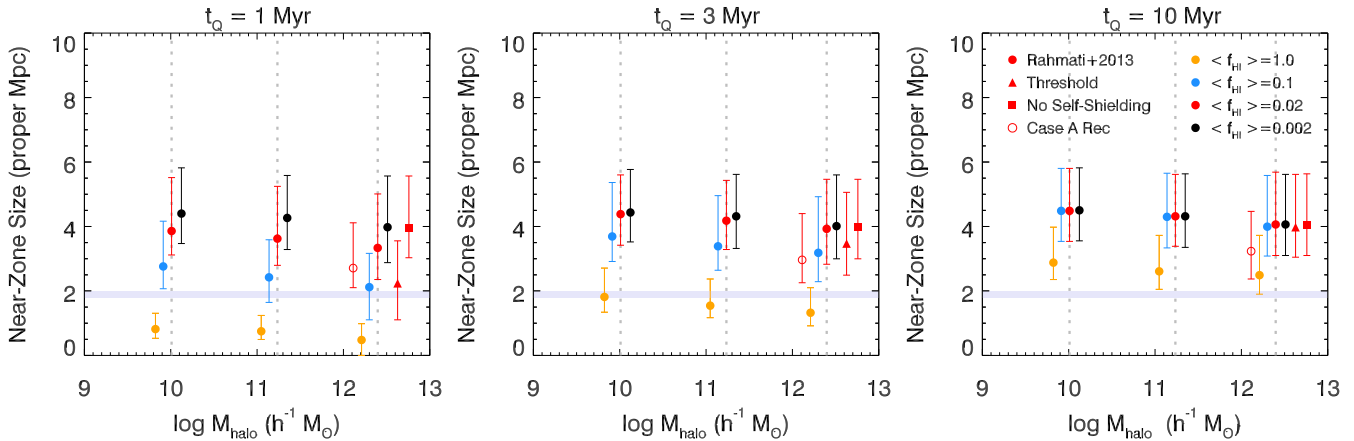
with time in our three different environments at  $z = 6$  and 7 (Fig. 7). Note that from this point on, due to the computational costs running the radiative transfer simulations to 10 Myr, we only perform the radiative transfer on one octant of our simulation box. We find that once the ionization front has moved beyond the point where the clustering around host halo boosts the density of the IGM, there is only a very weak trend of decreasing near-zone size with increasing mass of the host halo. The other point of interest is the manner in which the near-zone sizes grow. There is a period of initial rapid growth, followed by a levelling-off in which there is little evolution in the median near-zone size of the system. The period of rapid growth is the time for which  $R_{\text{ion}} < R_{\alpha}^{\text{max}}$ . After this point, we find that the median near-zone size and scatter in the near-zone sizes are independent of the initial neutral fraction. Due to the size of our simulation, at  $z = 6$  approximately 10 per cent of our sightlines have near zones that extend beyond the size of our box. In this case, we take the size of the box to be a lower limit to the near-zone size. In Appendix B, we investigate the effect of including thermal feedback (from AGN and supernovae) in our hydrodynamical simulations and find that although this does not change our results significantly for  $t_Q > 1$  Myr, we do find larger near-zone sizes for QSO lifetimes shorter than this due to a bubble of hot gas centred on the AGN. We find also that there is a natural decrease in the distance at which the near-zone sizes become saturated with increasing redshift. As shown by equation (3), such a decrease is expected due to the increase of the mean baryonic density with redshift, as  $\Delta_{\text{lim}}$  and the IGM temperature are probably only varying slowly. We see also a small decrease in the scatter with increasing redshift.

In Fig. 8, we plot the near-zone sizes we measure after  $t_Q = 1, 3$  and 10 Myr as a function of the mass of the host halo at  $z = 7$ . Results are shown for a range of initial average neutral fractions. Again, we find only a weak correlation between the near-

zone size and the density of the three regions. This can be easily understood by looking at the left-hand panel of Fig. 2, which shows the mean overdensity contained in a sphere of a given radius centred around the host halo. When the size of the observed near zones are small enough, the matter overdensity around the host halo has not yet returned to the cosmic mean and the effect of the immediate environment of the host halo is imprinted in the distribution of near-zone sizes. However, due to the large scatter in near-zone sizes found in all three cases, it will be difficult to use near-zone sizes to constrain the mass of the host halo of the QSO.

For our overdense halo, we also investigate how our choice of self-shielding model effects the sizes of the near zones we measure. For the same photoionization rate  $\log \Gamma_{\text{HII}} (\text{s}^{-1}) = -14.3$ , we compare our fiducial model, taken from Rahmati et al. (2013), with a simple threshold self-shielding model where all gas with overdensity above some threshold  $\Delta_{\text{ss}}$  (Schaye 2001) is assumed to be neutral (see also Miralda-Escudé et al. 2000; Furlanetto & Oh 2005; Bolton et al. 2011). We find that in the simple threshold model, the Lyman limit systems become more effective at slowing the progression of the ionization front. This results in a smaller H II region and near-zone sizes. However, the distance at which the near-zone sizes saturate is similar for both self-shielding models and for the case of no self-shielding at all. Note also that the largest effect of changing the self-shielding model is the amount of neutral gas available for the same photoionization rate. The difference between the threshold self-shielding model and the prescription of Rahmati et al. (2013) increases the average volume weighted neutral hydrogen fraction by an order of magnitude and neglecting self-shielding entirely decreases the average volume weighted neutral hydrogen fraction by an order of magnitude.

We also check the effect of switching from case B to case A recombination rates. We find that the near-zone sizes saturate at a



**Figure 8.** Median near-zone size as a function of mass of the host halo at  $z = 7$ . The shift in the points around the masses of the three haloes is for display purposes only. The dashed grey vertical lines mark the mass of the host halo. The error bars represent the 15th/85th percentiles in the near-zone sizes. No strong trend of near-zone size with the mass of the host halo is visible. The shaded region shows the estimate for the near-zone size of the  $z = 7.085$  QSO ULAS J1120+0641.

distance of 3 pMpc from the host halo, closer to the value obtained in Bolton et al. (2011) than what we find in our models using case B recombination. However, we still do not include the diffuse radiation that would result from a full treatment of recombinations. The change in recombination rate does not make a large difference for the smaller near zones we measure and only becomes important along sightlines where the ionization front has travelled a large distance when the number of recombinations along the sightline becomes significant. This therefore also has the result of reducing the scatter slightly.

### 3.5 Red damping wings in the simulated spectra

The second observable that has been used to quantify the impact of a still largely neutral IGM on the spectra of QSOs is the transmission at the rest-frame wavelength of Ly  $\alpha$ . In the presence of high densities of neutral hydrogen, even flux redwards of Ly  $\alpha$  can be attenuated producing a red damping wing. The strength of this damping wing can then be used to place constraints on the neutral fraction of the IGM (Miralda-Escudé 1998; Mesinger, Haiman & Cen 2004; Wyithe & Loeb 2004; Mesinger & Furlanetto 2008; Bolton et al. 2011; Mortlock et al. 2011; Schroeder, Mesinger & Haiman 2013).

In Fig. 9, we plot the transmission at the Ly  $\alpha$  rest-frame wavelength as a function of time for our three regions. We measure this transmission after smoothing our spectra to the same resolution at which we measure the near-zone sizes. We find that, as expected, the regions with higher average initial neutral fractions display stronger red damping wings. These damping wings are stronger for shorter QSO lifetimes, when the ionization front is still in the higher density region surrounding the host halo.

Perhaps more interestingly, we also find that the transmission at Ly  $\alpha$  is consistently lower in the overdense regions, for all the initial average neutral fractions that we consider due to the increased number of dense, self-shielded systems. This is displayed more clearly in Fig. 10. It is perhaps not surprising that we find that the mass of the host halo plays an important role in the strength of the red damping wing and not for the size of the near zones. In the case of the near zones, we are probing parts of the IGM with average density close to the mean. The strength of the damping wing is however more sensitive to the environment around the source. This

clustering of dense absorbers is largest in the most massive halo we look at (left-hand panel of Fig. 2), resulting in a large scatter in the transmission at Ly  $\alpha$  not found in the lower mass haloes we simulate.

In this case, the choice of self-shielding model does not seem to make a large difference. For short QSO lifetimes, we find that the threshold self-shielding model predicts a stronger damping wing. For longer, more realistic lifetimes ( $\sim 10$  Myr), the results from the threshold self-shielding model are similar to those predicted by the Rahmati et al. (2013) model. We also do not find a large change in the transmission when we use the case A recombination rate.

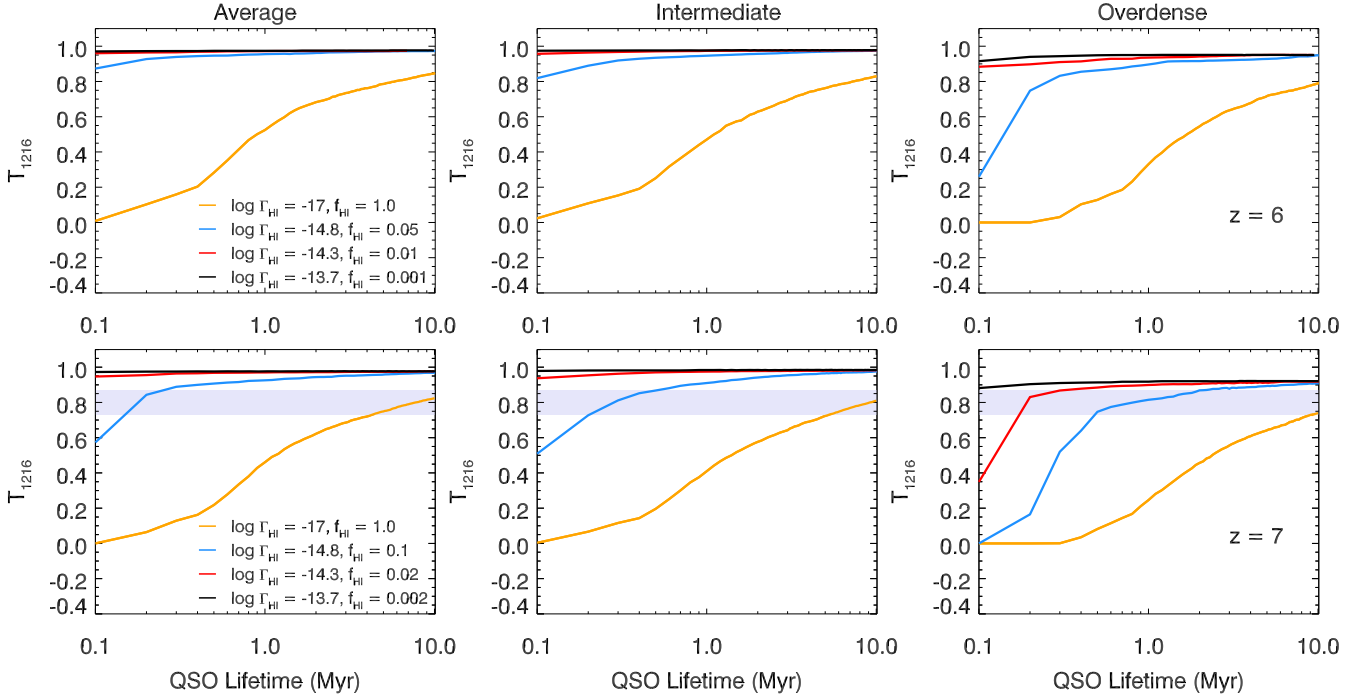
## 4 COMPARISON WITH OBSERVATIONS

### 4.1 $z \sim 6$ near zones

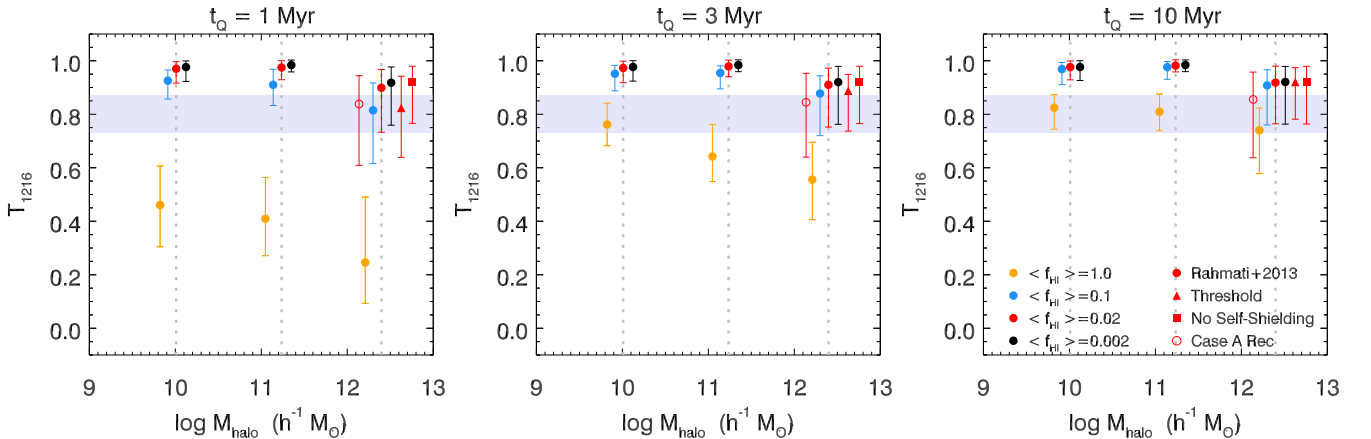
In the left-hand panel of Fig. 11, we compare the measured near-zone sizes from simulation of our overdense region at  $z = 6$  to observed near-zone sizes in the range  $5.9 < z < 6.1$  taken from Carilli et al. (2010). Here, we used a background photoionization rate  $\log \Gamma_{\text{HI}}(\text{s}^{-1}) = -12.8$ , based on measurements of the UV background at  $z \sim 6$  by Calverley et al. (2011) and Bolton & Haehnelt (2007a) and  $\log \Gamma_{\text{HI}}(\text{s}^{-1}) = -12.5$  to mimic a late reionization scenario (as in Choudhury et al. 2015). We consider two different QSO luminosities,  $\log \dot{N}_\gamma(\text{s}^{-1}) = 57.1$  and  $57.3$ , which fall in the range of values estimated by Fan et al. (2006).

For the same quasar luminosity and background photoionization rate, there is an increase in the near-zone size with decreasing redshift. With our fiducial quasar luminosity and a UV background  $\log \Gamma_{\text{HI}} = -12.8$ , we match the lower end of the observed  $z = 6$  near-zone sizes remarkably well. This is somewhat in contrast with other work (Bolton & Haehnelt 2007a; Wyithe et al. 2008) and the different result is most likely due to the difference in the recombination rates used here (case B versus case A). We have also run a simulation where we increased the luminosity of our ionizing source by a factor of 1.5 and find that this increases the near-zone sizes we find with many now larger than the near-zone sizes our box can contain. In the cases where the near-zone size occurred at a distance larger than the radius of our box, we took the radius of the box as a lower limit.





**Figure 9.** Evolution of transmission at Ly  $\alpha$  with time for the three different density fields. Left: average, middle: intermediate, right: overdense. Top:  $z = 6$ , bottom:  $z = 7$ . In each panel, we plot a range of different initial neutral fractions. The solid line in each case is the median transmission at 1216 Å we measure. More sightlines display a red damping wing in the overdense region than in the less-dense regions. The shaded region shows the estimate for the transmission at Ly  $\alpha$  of the  $z = 7.085$  QSO ULAS J1120+0641.



**Figure 10.** Median transmission at Ly  $\alpha$  as a function of mass of the host halo at  $z = 7$ . The shift in the points around the masses of the three haloes is for display purposes only. The dashed grey vertical lines mark the mass of the host halo. The error bars represent the 15th/85th percentile scatter in the near-zone sizes. The shaded region shows the estimate for the transmission at Ly  $\alpha$  of the  $z = 7.085$  QSO ULAS J1120+0641.

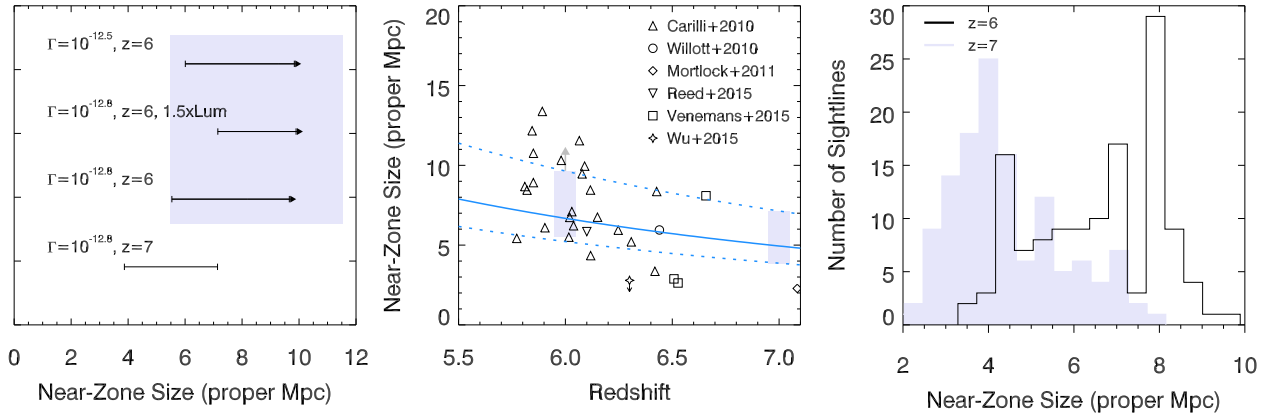
#### 4.2 The $z = 7.085$ QSO ULAS J1120+0641

We now want to use our simulations to revisit the constraints on the ionization state of the IGM around the  $z = 7.085$  QSO ULAS J1120+0641. Modelling of this kind has previously been undertaken in Bolton et al. (2011). However, the mass of the host halo in that work was a factor of 100 times less massive than the one considered here (although based on Section 3.4 we expect this to make remarkably little difference).

Our analytical estimate described by equation (3) predicts that  $R_{\alpha}^{\max} = 1.86/\Delta_{\text{lim}}$  proper Mpc (assuming our fiducial values for  $\alpha$  and  $\dot{N}$ ). Assuming that the absorption at  $z = 7.085$  is due to overdensities of  $\Delta \sim 0.5$  similar to that required to explain the

observed near-zone sizes at  $z = 6$ , then we would expect  $R_{\alpha}^{\max} \sim 3.72$  (albeit with a large scatter). Mortlock et al. (2011) measure the near-zone of ULAS J1120+0641 to be  $1.9 \pm 0.1$  proper Mpc. This suggests that the near-zone of ULAS J1120+0641 is unlikely to be due to the proximity effect and may therefore be a useful probe of a substantially neutral IGM at  $z = 7.085$ .

In the right-hand panel of Fig. 7, we compare the measured near-zone size of ULAS J1120+0641 (shaded purple region) to the simulations of the overdense region containing a  $2.5 \times 10^{12} M_{\odot}$  halo. We find that only for simulations with a large average initial neutral fraction somewhere between  $(f_{\text{HI}})_{\text{init}} = 0.1 - 1.0$  can we reproduce the small observed near-zone size.



**Figure 11.** Left: QSO near-zone sizes (corrected for differences in luminosity) at  $z = 6$  and  $z = 7$  for background photoionization rates ( $\log \Gamma_{\text{H I}} (\text{s}^{-1}) = -12.8, -12.5$ ) and two different QSO luminosities ( $\log \dot{N}_{\gamma} (\text{s}^{-1}) = 57.1, 57.3$ ) in our overdense region after 10 Myr. The shaded region represents the observed near-zone sizes at  $z = 6$  taken from Carilli et al. (2010). Middle: observed near-zone sizes as a function of redshift, scaled to the same luminosity. Plotted in blue is the analytic evolution of near-zone sizes with redshift given by equation (3) with  $\Delta_{\text{lim}}$  at the median and the measured 15th/85th percentiles of the saturated near-zone sizes at  $z = 7$ . The shaded regions are the 15th/85th percentiles of the simulated near-zone sizes at  $z = 6, 7$ . Right: distribution of the near-zone sizes at  $z = 6$  and  $7$  in the simulations with  $\log \Gamma_{\text{H I}} (\text{s}^{-1}) = -12.8$  after 10 Myr for our default luminosity.

For QSO lifetimes long enough to allow the central massive black hole to grow while the QSO is optically bright, we also struggle to match the strength of the damping wing observed in ULAS J1120+0641 except in the case of our most massive host halo or for an initially neutral IGM. For the simulations centred on our most massive halo, damping wings almost as strong as that of ULAS J1120+0641 are seen in the 15th/85th percentiles of all of our models, even the ones with low volume-weighted initial neutral hydrogen fraction (e.g.  $\langle f_{\text{H I}} \rangle_{\text{init}} = 0.02$ ). The observed red damping wing therefore provides little constraint on the neutral fraction of the surrounding IGM if ULAS J1120+0641 is indeed hosted by a massive halo. However, note here that we have neglected the ionizing radiation from Lyman  $\alpha$  emitters that may reside in these systems and weaken the Ly  $\alpha$  damping wing (Bolton & Haehnelt 2013).

Note also that modelling of this kind is further complicated by the fact that, towards the end of reionization, there are expected to be large variances in the neutral fraction along different sightlines (e.g. Becker et al. 2015) and that the QSOs may have been bright at earlier redshifts and may have already ionized its surroundings (Feng et al. 2013).

### 4.3 Evolution with redshift

In the middle panel of Fig. 11, we plot the published near-zone sizes of a selection of quasars with  $z > 5.8$  (Carilli et al. 2010; Willott et al. 2010; Mortlock et al. 2011; Reed et al. 2015; Venemans et al. 2015; Wu et al. 2015). Near-zone sizes have been corrected for luminosity as  $R_{\text{NZ,corr}} = 10^{0.4(27+M_{1450,\text{AB}})/2} R_{\text{NZ}}$ . Note that near-zone sizes in the literature have been often corrected assuming that the near-zone size scales with the ionizing luminosity as  $\dot{N}^{1/3}$ , as expected when the near-zone size traces the edge of the H II region, not  $\dot{N}^{1/2}$  which is the (more likely correct) scaling expected for saturated near-zone sizes. The recently reported rather large near-zone size measured by Wu et al. (2015) decreases substantially when rescaled for the luminosity of this very bright QSO. We plot this particular near-zone size as an upper limit, as Wu et al. (2015) have used a definition of near-zone size for their measurement that is different from the normally used definition from Fan et al. (2006).

For comparison, we also plot the values at the 15th/85th percentiles of near-zone sizes we measure in our simulations at  $z = 6$  and  $7$ , also rescaled for luminosity (with an assumed  $M_{1450,\text{AB}}$  to match ULAS J1120+0641). Here we use a highly ionized IGM (with background photoionization rate  $\log \Gamma_{\text{H I}} (\text{s}^{-1}) = -12.8$ , to try and make a fair comparison to the observed  $z = 6$  near zones). For this  $\Gamma_{\text{H I}}$ , we find that the near-zone sizes saturate quickly. Here, we plot the scatter of a simulation at  $t_Q = 10$  Myr, but in this regime we no longer expect any dependence on  $t_Q$  (Fig. 7). We also plot the analytic solution for the evolution of saturated near-zone sizes with redshift (equation 3), where we have selected  $\Delta_{\text{lim}}$  to fit the median near-zone size and the scatter we measure at  $z = 7$  [ $\Delta_{\text{lim}} = (0.26, 0.38, 0.48)$  for the 15th percentile, median and the 85th percentile].

The analytic solution tuned to fit our results at  $z = 7$  also agrees well with our results at  $z = 6$ . Note that the evolution we predict is shallower than the linear fits to the near-zone sizes from Carilli et al. (2010) and Venemans et al. (2015) perhaps suggesting that the IGM indeed becomes substantially more neutral at  $z > 6.3$  than predicted by the evolution of the mean density alone. We also note that the scatter at  $z = 6$  will in reality be somewhat larger (indicated by the grey arrow in the plot), as we have used the size of our box as a lower limit in cases where we do not find a near-zone size along a sightline. At  $z > 6.5$  there are several near zones that fall outside of our predicted scatter. These near zones may represent unsaturated cases, where the size is still following the radius of the H II region. For realistic QSO lifetimes  $t_Q \gtrsim 1$  Myr, Fig. 7 suggests that these QSO may reside in regions of the IGM with  $\langle f_{\text{H I}} \rangle_{\text{init}} \gtrsim 0.1$  and lower photoionization rate than we assumed in Fig. 7.

The observations at  $z \sim 6$  contain near zones with sizes  $\gtrsim 10$  pMpc which our simulations cannot reproduce due to the limited box size of our simulation. The distribution of near-zone sizes at  $z = 6$  shown in the right-hand panel of Fig. 11 has a large peak at 8 pMpc. This is the result of the lower limits we are assuming for sightlines where no near zone is found. For a larger simulated region, some of our sightlines should produce near zones that would match the observations. However, these would be the outliers in our distribution and it is also possible that defining the point where the near zone ends at  $z \sim 6$  becomes ambiguous due to patches of transmitted flux in the Ly  $\alpha$  forest (Bolton & Haehnelt 2007a).

#### 4.4 Caveats and limitations

There are obviously still a significant number of uncertainties and limitations in our modelling that should be taken into account when considering our results. First, the resolution of our hydrodynamical simulations is still somewhat below what would be ideally required to resolve the Ly  $\alpha$  forest (Bolton & Becker 2009) at  $z > 5$ . Our maximum resolution was dictated by the large simulation region necessary to follow the evolution of the ionization front over a realistic quasar lifetime. For the simulation box to still contain observed near-zone sizes at  $z > 6.5$ , the chosen resolution was the best that was still computationally feasible to run. As we have discussed, the largest observed near zone sizes at  $z \sim 6$  still exceed the size of the region we have simulated here by up to a factor 1.5. We have investigated the effects of changing the resolution in Appendix A.

As stated in Section 2.2, our radiative transfer post-processing only evolves the temperature and ionization state of the gas, but neglects the evolution of the density field as well as the coupling of the radiation to the density field. However, as discussed earlier the time-scales that we are considering here are short compared to the time-scales over which this matters. The speed of the ionization front in our case is close to the speed of light, and therefore many orders of magnitude larger than the sound speed in the IGM. Another possible effect we neglected is the thermal pressure due to the heating provided by the passage of the ionization front. But, once again, adiabatic expansion of the gas is negligible over the time-scales that we are considering. Also, as we are using the ‘on-the-spot’ treatment of recombination radiation, we assume that ionizing photons produced by hydrogen and helium recombinations are reabsorbed instantaneously in the same computational cell. The inclusion of the diffuse radiation from recombinations would likely reduce the ability of dense absorbers to effectively shadow the ionization front (as seen in Fig. 3) and somewhat reduce the scatter in the near-zone sizes we model (see Cantalupo & Porciani 2011 for a detailed discussion of recombination radiation effects on quasar H II regions).

We furthermore only model the initial ionization state of the IGM using a homogeneous UV background. This certainly oversimplifies the previous evolution of the IGM before the QSO turns on for a single episode of constant luminosity as reionization is a highly inhomogeneous process, with individual galactic sources pre-ionizing inhomogeneously the surrounding IGM to different levels and the QSO likely to have a complex light curve. An enhanced contribution to the photoionization rate from galaxies close to the QSO has been previously suggested to increase near-zone sizes at  $z = 6$  (Bolton & Haehnelt 2007a; Wyithe et al. 2008; Maselli et al. 2009). However, this simple model for the UV background should not change our predictions for the evolution of saturated near-zone sizes with redshift (middle panel of Fig. 11), as the distance at which the near-zone sizes become saturated at is independent of the ionization state of the gas. It will also not change our results at  $z = 7$ , as we find it difficult to match the observed near zone of ULAS J1120+0641 even for an IGM that is initially completely neutral.

## 5 SUMMARY AND CONCLUSIONS

We have presented here results from our detailed modelling of quasar near zones at  $z = 6$  and 7. We have performed zoom simulations of three dark matter haloes from the Millennium Simulation, which differ in mass by more than a factor of 100, and post-processed these with the 3D radiative transfer code RADAMESH, exploring a range of initial neutral fractions representing different

reionization histories. We placed a source of the same luminosity as expected for the  $z = 7.085$  QSO ULAS J1120+0641 in each halo.

The spatial extent of the ionization fronts in our simulations shows a large scatter with direction for fixed QSO lifetime. The location of the edge of ionization front appears to have a loose association with low-mass dark matter haloes ( $>10^9 M_\odot$ ) hosting self-shielded absorbers. We further find that the size of the near zones of bright high-redshift QSOs depends only very weakly on the mass of the QSO host halo. For realistic QSO lifetimes ( $>1$  Myr), the ionization front has moved out into the general IGM where the average densities have returned to close to the mean.

Our simulations reproduce the observed range of  $z \sim 6-7$  near-zone sizes very well once we take into account the limitations due the size of our simulated region. Even when the extent of the near-zone sizes in our simulation has become saturated due to residual neutral hydrogen in the H II region, we still find a large scatter in the near-zone sizes along different sightlines around the host halo. The scatter of the observed flux due to variations in the density field can explain a lot of the scatter in the observed near-zone sizes without the need to invoke different volume-averaged neutral hydrogen fractions along different lines of sight or anisotropic emission.

We have presented here the first simulations of QSO near zones around a host halo with a mass as high as expected for ULAS J1120+0641. We find that, for a QSO lifetime of 10 Myr, the observed near-zone size of ULAS J1120+0641 falls just within the lower end of our 15th/85th percentile scatter for a IGM that is initially completely neutral at  $z = 7$ . This may be indicative of the presence of a high H I column density absorber lying close to the quasar or may suggest that the duration of the optically bright phase in ULAS J1120+0641 is  $<10$  Myr and thus too short for its supermassive black hole to grow significantly. Alternatively, this may cast doubt on the robustness of the measured size of this particular near zone. We further caution that for massive QSO host haloes, the transmission at the Ly  $\alpha$  rest-frame wavelength can be low even if the IGM is generally highly ionized.

Current and upcoming surveys will provide new observations of QSOs and their near-zone sizes which, in conjunction with alternative observations, should allow us to further improve constraints on the neutral fraction of the IGM at the end of reionization, as well as on the relative contribution of obscured and unobscured growth to the build-up of the supermassive black holes powering them.

## ACKNOWLEDGEMENTS

We would like to thank Jamie Bolton for his detailed and helpful comments on a draft of this manuscript. We also thank Volker Springel for making GADGET-3 available. We are also grateful to Simon White for granting access to Millennium Simulation data. The plots presented in Fig. 1 use the cube helix colour scheme introduced by Green (2011). This work used the DiRAC Data Analytic system at the University of Cambridge, operated by the University of Cambridge High Performance Computing Service on behalf of the STFC DiRAC HPC Facility ([www.dirac.ac.uk](http://www.dirac.ac.uk)). This equipment was funded by BIS National E-infrastructure capital grant (ST/K001590/1), STFC capital grants ST/H008861/1 and ST/H00887X/1, and STFC DiRAC Operations grant ST/K00333X/1. This work also used the DiRAC Data Centric system at Durham University, operated by the Institute for Computational Cosmology on behalf of the STFC DiRAC HPC Facility ([www.dirac.ac.uk](http://www.dirac.ac.uk)). This equipment was funded by BIS National E-infrastructure capital grant ST/K00042X/1, STFC capital grants ST/H008519/1 and ST/K00087X/1, STFC DiRAC Operations grant



ST/K003267/1 and Durham University. DiRAC is part of the National E-Infrastructure. LCK acknowledges the support of an Isaac Newton Studentship, the Cambridge Trust and STFC. Support by the FP7 ERC Advanced Grant Emergence-320596 is gratefully acknowledged.

## REFERENCES

- Bañados E., Venemans B., Walter F., Kurk J., Overzier R., Ouchi M., 2013, *ApJ*, 773, 178
- Bauer A., Springel V., Vogelsberger M., Genel S., Torrey P., Sijacki D., Nelson D., Hernquist L., 2015, preprint ([arXiv:e-prints](https://arxiv.org/abs/1504.03264))
- Becker G. D., Bolton J. S., Madau P., Pettini M., Ryan-Weber E. V., Venemans B. P., 2015, *MNRAS*, 447, 3402
- Bolton J. S., Becker G. D., 2009, *MNRAS*, 398, L26
- Bolton J. S., Haehnelt M. G., 2007a, *MNRAS*, 374, 493
- Bolton J. S., Haehnelt M. G., 2007b, *MNRAS*, 381, L35
- Bolton J. S., Haehnelt M. G., 2013, *MNRAS*, 429, 1695
- Bolton J. S., Becker G. D., Wyithe J. S. B., Haehnelt M. G., Sargent W. L. W., 2010, *MNRAS*, 406, 612
- Bolton J. S., Haehnelt M. G., Warren S. J., Hewett P. C., Mortlock D. J., Venemans B. P., McMahon R. G., Simpson C., 2011, *MNRAS*, 416, L70
- Bosman S. E. I., Becker G. D., 2015, *MNRAS*, 452, 1105
- Calverley A. P., Becker G. D., Haehnelt M. G., Bolton J. S., 2011, *MNRAS*, 412, 2543
- Cantalupo S., Porciani C., 2011, *MNRAS*, 411, 1678
- Cantalupo S., Porciani C., Lilly S. J., 2008, *ApJ*, 672, 48
- Carilli C. L. et al., 2010, *ApJ*, 714, 834
- Chardin J., Haehnelt M. G., Aubert D., Puchwein E., 2015, *MNRAS*, 453, 2943
- Choudhury T. R., Puchwein E., Haehnelt M. G., Bolton J. S., 2015, *MNRAS*, 452, 261
- Costa T., Sijacki D., Haehnelt M. G., 2014, *MNRAS*, 444, 2355
- Costa T., Sijacki D., Haehnelt M. G., 2015, *MNRAS*, 448, L30
- Fan X. et al., 2006, *AJ*, 132, 117
- Fanidakis N., Macciò A. V., Baugh C. M., Lacey C. G., Frenk C. S., 2013, *MNRAS*, 436, 315
- Feng Y., Croft R. A. C., Di Matteo T., Khandai N., 2013, *MNRAS*, 429, 1554
- Finkelstein S. L. et al., 2013, *Nature*, 502, 524
- Furlanetto S. R., Oh S. P., 2005, *MNRAS*, 363, 1031
- Green D. A., 2011, *Bull. Astron. Soc. India*, 39, 289
- Haardt F., Madau P., 2012, *ApJ*, 746, 125
- Iliev I. T., Shapiro P. R., Raga A. C., 2005, *MNRAS*, 361, 405
- Iliev I. T. et al., 2006, *MNRAS*, 371, 1057
- Lidz A., McQuinn M., Zaldarriaga M., Hernquist L., Dutta S., 2007, *ApJ*, 670, 39
- Maselli A., Gallerani S., Ferrara A., Choudhury T. R., 2007, *MNRAS*, 376, L34
- Maselli A., Ferrara A., Gallerani S., 2009, *MNRAS*, 395, 1925
- Mesinger A., Furlanetto S. R., 2008, *MNRAS*, 385, 1348
- Mesinger A., Haiman Z., Cen R., 2004, *ApJ*, 613, 23
- Miralda-Escudé J., 1998, *ApJ*, 501, 15
- Miralda-Escudé J., Haehnelt M., Rees M. J., 2000, *ApJ*, 530, 1
- Morselli L. et al., 2014, *A&A*, 568, A1
- Mortlock D. J. et al., 2011, *Nature*, 474, 616
- Ouchi M. et al., 2010, *ApJ*, 723, 869
- Pentericci L. et al., 2014, *ApJ*, 793, 113
- Planck Collaboration, XVI, 2014, *A&A*, 571, A16
- Planck Collaboration XIII, 2015, preprint ([arXiv:1502.01589](https://arxiv.org/abs/1502.01589))
- Rahmati A., Pawlik A. H., Raičević M., Schaye J., 2013, *MNRAS*, 430, 2427
- Reed S. L. et al., 2015, preprint ([arXiv:1504.03264](https://arxiv.org/abs/1504.03264))
- Robertson B. E., Ellis R. S., Furlanetto S. R., Dunlop J. S., 2015, *ApJ*, 802, L19
- Schaye J., 2001, *ApJ*, 559, 507
- Schroeder J., Mesinger A., Haiman Z., 2013, *MNRAS*, 428, 3058
- Shapiro P. R., Iliev I. T., Alvarez M. A., Scannapieco E., 2006, *ApJ*, 648, 922
- Sijacki D., Springel V., Haehnelt M. G., 2009, *MNRAS*, 400, 100
- Simpson C., Mortlock D., Warren S., Cantalupo S., Hewett P., McLure R., McMahon R., Venemans B., 2014, *MNRAS*, 442, 3454
- Songaila A., Cowie L. L., 2010, *ApJ*, 721, 1448
- Springel V., 2005, *MNRAS*, 364, 1105
- Springel V. et al., 2005, *Nature*, 435, 629
- Stark D. P., Ellis R. S., Chiu K., Ouchi M., Bunker A., 2010, *MNRAS*, 408, 1628
- Venemans B. P. et al., 2013, *ApJ*, 779, 24
- Venemans B. P. et al., 2015, *ApJ*, 801, L11
- Viel M., Haehnelt M. G., Springel V., 2004, *MNRAS*, 354, 684
- White R. L., Becker R. H., Fan X., Strauss M. A., 2003, *AJ*, 126, 1
- Willott C. J. et al., 2010, *AJ*, 140, 546
- Wu X. et al., 2015, *Nature*, 518, 512
- Wyithe J. S. B., Loeb A., 2004, *Nature*, 427, 815
- Wyithe J. S. B., Bolton J. S., Haehnelt M. G., 2008, *MNRAS*, 383, 691
- Yu Q., 2005, *ApJ*, 623, 683

## APPENDIX A: RESOLUTION TESTS

To study the effect of the numerical resolution of our simulation on the near-zone sizes we measure, we ran two additional hydrodynamic simulations of our overdense region,<sup>1</sup> differing in mass resolution from our fiducial model by a factor of 8, summarized in Table A1. For the high-resolution run, only a sphere with radius  $9 h^{-1}$  comoving Mpc was simulated due to computational restraints. The high- (low-) resolution hydrodynamical simulations were mapped on to correspondingly finer (coarser) grids with respect to our default model. Examples of the resulting ionization fronts in a simulation with  $\langle f_{\text{H}_1} \rangle_{\text{init}} = 0.02$  at  $t_Q = 0.2$  Myr are shown in Fig. A1. We find that the scatter in the distance the ionization front has travelled among the different sightlines increases as the resolution is increased.

Fig. A2 shows the results of three tests we performed to understand how changing the resolution altered our measurements of the near zones and the transmission at the Ly  $\alpha$  rest-frame wavelength. In the left-hand panel, we show the median near-zone size and the values at the 15th/85th percentiles as a function of the gas particle mass. The middle panel shows the frequency of different near-zone sizes among the sightlines. We use a snapshot at  $t_Q = 2$  and 10 Myr in a simulation with  $\langle f_{\text{H}_1} \rangle_{\text{init}} = 1.0$ . For the simulation with  $t_Q = 10$  Myr, we only plot the near zones measured in our default- and low-resolution simulations, as for this QSO lifetime many of the near-zone sizes are larger than the radius of our highest resolution simulation. We find that, as the resolution is degraded, our simulations predict a similar median and scatter in near-zone sizes.

We further find that the transmission at Ly  $\alpha$  is similar in our default- and low-resolution simulations at both QSO lifetimes considered here (right-hand panel of Fig. A2). The transmission at the Ly  $\alpha$  rest-frame wavelength is higher in our highest resolution simulation, most likely due to our star formation prescription. As we increase the resolution of our simulations, we form stars more efficiently and there is thus less gas remaining. This will have the largest effect in the densest regions responsible for absorption. These are the regions that also should be affected by stellar and AGN feedback not included in our default simulations. We note, however, that the median transmission and the scatter in our default simulation is

<sup>1</sup> In each of these appendices, we perform tests using our overdense region at  $z = 7$  which contains the  $10^{12.5} M_{\odot}$  halo, unless stated otherwise.

**Table A1.** Comparison of the three simulations we consider in our resolution tests.

Resolution	$m_{\text{gas}}$ ( $\times 10^6 h^{-1} M_{\odot}$ )	Softening length ( $h^{-1}$ kpc)	Size of the largest cell ( $h^{-1}$ Mpc)
High	0.35	0.625	0.044
Default	2.80	1.250	0.089
Low	22.0	2.50	0.177

reasonably well matched by a simulation with a more realistic star formation prescription that also includes stellar and AGN feedback (Section B).

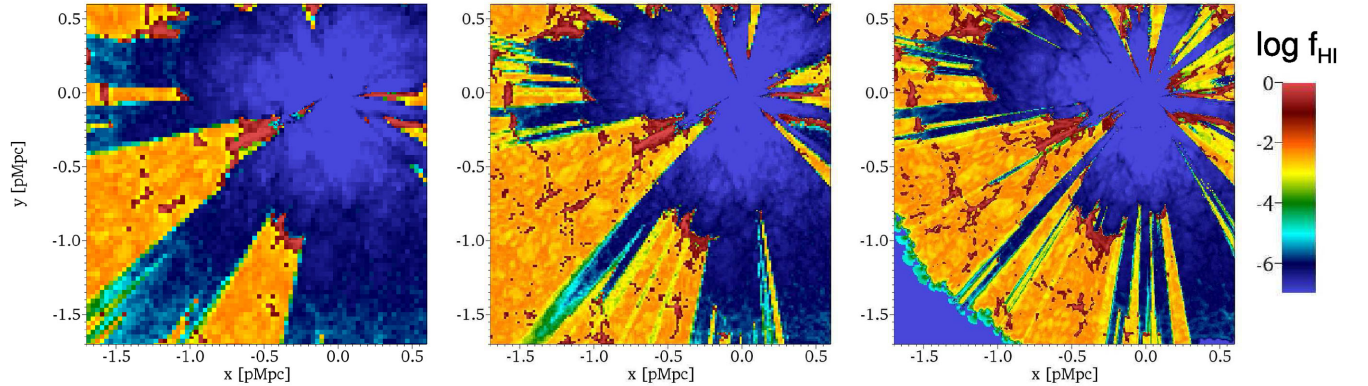
## APPENDIX B: EFFECT OF FEEDBACK

As we expect feedback from stars and AGN to play a role in shaping the environment around galaxies, we ran another simulation of our overdense region which included the effect of feedback. We have used here the same feedback prescription as in Costa, Sijacki & Haehnelt (2015), including supernovae- and AGN-driven outflows, which reproduced well observations of spatially extended cold gas around a  $z = 6.4$  QSO. For the supernovae-driven winds, we used a mass loading factor  $\eta = 1$  and a velocity of  $1183 \text{ km s}^{-1}$ . However, note that our simulation fails to reproduce the fast-moving cold

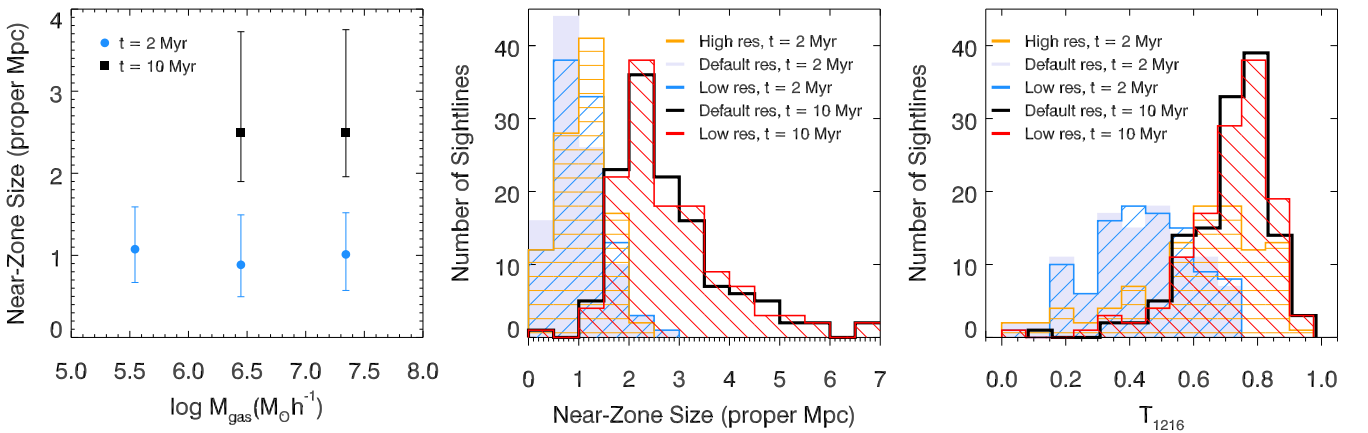
gas found in Costa et al. (2015), perhaps due to differences in the codes used (the moving-mesh code AREPO versus the SPH code P-GADGET3), a different choice of UV background or the effect of including metal-line cooling.

We find that the shape of the ionization front is remarkably similar to our fiducial model (compare the middle and right-hand panels of Fig. B1). There is still a large scatter in the distance that the front has travelled, depending on the sightline. In the middle panel of Fig. B2, we plot the growth of the median near-zone size with time. We find that, for  $t_Q < 0.5$  Myr, the model including feedback shows near-zone sizes with median size  $\sim 0.5$  pMpc larger than our fiducial model. This is due to a combination of the galactic winds removing dense gas from the host halo and the thermal feedback resulting in more collisionally ionized gas in the host halo (also visible in some of the larger haloes in the left-hand panel of Fig. B1). The right-hand panel of Fig. B2 shows that the temperature of the gas surrounding the host halo is an order of magnitude higher in the case with the AGN and supernova feedback compared with the simulation run with Quick Lyman  $\alpha$  star formation.

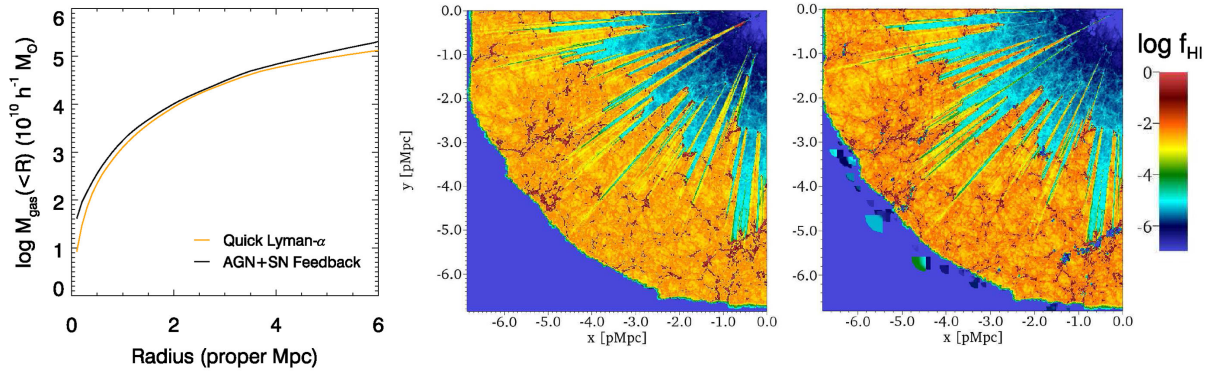
However, including thermal feedback does not have a large effect on the Ly  $\alpha$  transmission, and for longer QSO lifetimes we find that the median near-zone size and scatter found in our fiducial model is very similar to that in the simulations with feedback. The star formation prescription we have used in our fiducial model prevents



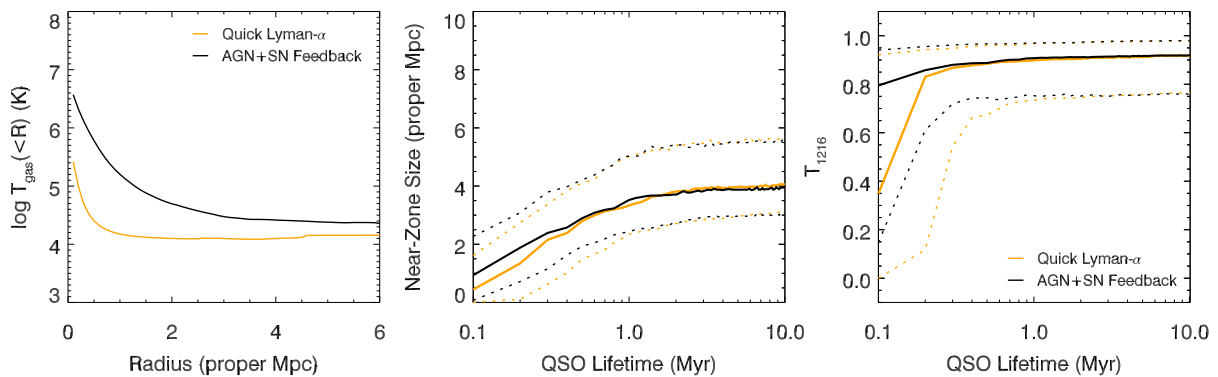
**Figure A1.** Map of the projected neutral hydrogen fraction over a  $0.03$  pMpc slice in our overdense region at  $t_Q = 0.2$  Myr at three different resolutions in a simulation with  $\langle f_{\text{HI}} \rangle_{\text{init}} = 0.02$ . Left:  $m_{\text{gas}} = 2.2 \times 10^7 h^{-1} M_{\odot}$ . Middle:  $m_{\text{gas}} = 2.8 \times 10^6 h^{-1} M_{\odot}$  (default resolution). Right:  $m_{\text{gas}} = 3.5 \times 10^5 h^{-1} M_{\odot}$ .



**Figure A2.** Left: median near-zone size with error bars representing the values at the 15th/85th percentiles against the mass of the gas particle in the three different-resolution simulations we test at  $t_Q = 2$  Myr and for our default- and low-resolution simulations at  $10$  Myr with  $\langle f_{\text{HI}} \rangle_{\text{init}} = 1.0$ . Middle: histogram of the near-zone sizes measured in our overdense region with  $\langle f_{\text{HI}} \rangle_{\text{init}} = 1.0$  at  $t_Q = 2$  and  $10$  Myr. Right: histogram of the transmission at the Ly  $\alpha$  rest-frame wavelength measured in our overdense region with  $\langle f_{\text{HI}} \rangle_{\text{init}} = 1.0$  at  $t_Q = 2$  Myr and  $10$  Myr.



**Figure B1.** Left: total gas mass contained in a sphere with radius specified on the horizontal axis, centred on the host halo for the two simulations. Middle: map of the projected neutral hydrogen fraction over a 0.03 pMpc slice for our overdense region for the Quick Lyman  $\alpha$  star formation prescription at  $t_Q = 1$  Myr with background photoionization rate  $\log \Gamma_{\text{HI}} (\text{s}^{-1}) = -14.3$ . Right: map of the projected neutral hydrogen fraction for the simulation containing including AGN and supernova feedback.



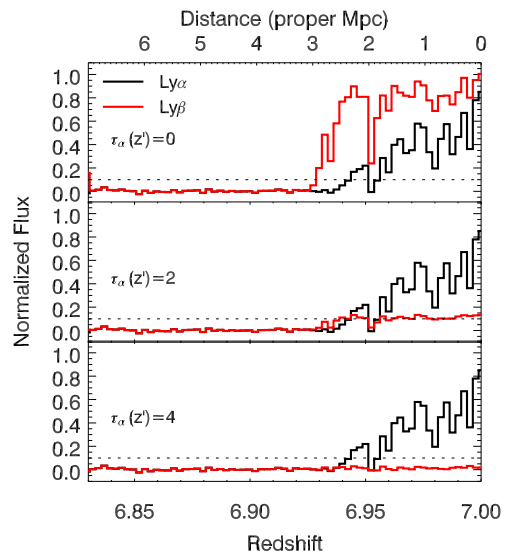
**Figure B2.** Left: mass-weighted average temperature in a sphere with radius specified on the horizontal axis, centred on the host halo for the two simulations. Middle: evolution of the near-zone sizes with time in our overdense region for the models with the Quick Lyman  $\alpha$  star formation prescription and with AGN and supernova feedback. The solid line represents the median value and the dashed lines are the values at the 15th/85th percentiles. Right: evolution of the transmission at the Ly  $\alpha$  rest-frame wavelength with time.

the build-up of high-density gas in the host halo. As well as being computationally efficient, this has the effect of mimicking more physically motivated feedback models which will eject gas from the host halo. We also find evidence for strong damping wings in the simulation including feedback (and note that the H I photoionization rate used here results in a volume-weighted neutral fraction of 0.02 in our fiducial model).

### APPENDIX C: LY $\beta$ NEAR ZONES

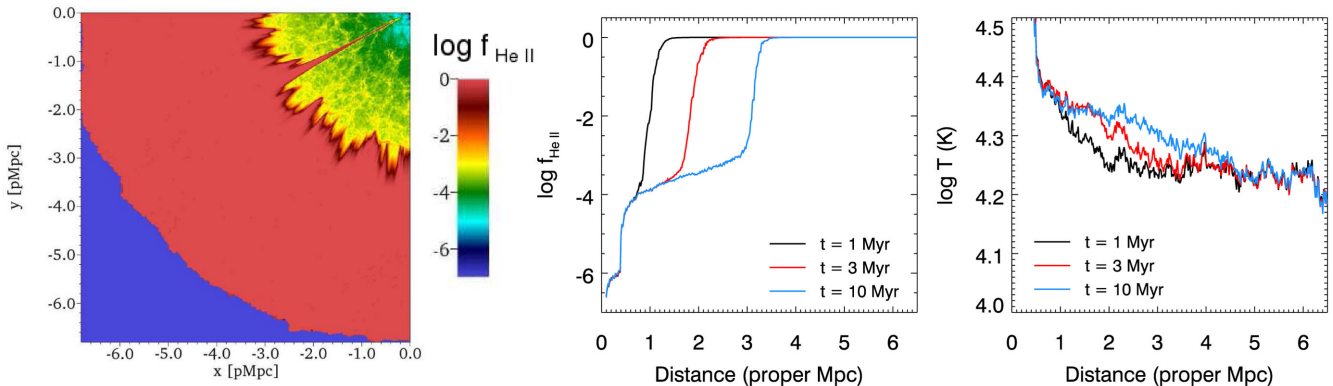
We have also investigated the dependence of Ly  $\beta$  near zones on the environment surrounding the host halo. Bolton & Haehnelt (2007a, 2007b) have highlighted the potential of Ly  $\beta$  absorption spectra as a probe of the  $z \gtrsim 6$  IGM, as they are expected to take longer to reach  $R_{\beta}^{\text{max}}$  than Ly  $\alpha$  near zones. The corresponding Ly  $\alpha$  forest absorption will occur at  $z' = [\lambda_{\beta}(1+z)/\lambda_{\alpha}] - 1$ . For  $z = 7$ , this corresponds to absorption at  $z' = 5.75$ . From Becker et al. (2015), the effective optical depth at this redshift will be greater than 2, with some observations returning a lower limit of 7. To test the effect of changing the effective optical depth, we simply increase the Ly  $\beta$  optical depth by a constant  $\tau_{\alpha}(z')$  across the whole sightline. Note however taking  $\tau_{\alpha}(z')$  to be constant is an unrealistic assumption as we expect  $\tau_{\alpha}(z')$  to vary with changes in the density field, etc. In Fig. C1, we plot the Ly  $\alpha$  and Ly  $\beta$  spectra along a sightline through our simulation with  $\tau_{\alpha}(z') = (0, 2, 4)$ .

We find that, due to the smaller scattering cross-section of Ly  $\beta$ , we see more transmitted flux in the Ly  $\beta$  spectrum than the Ly  $\alpha$



**Figure C1.** Simulated Ly  $\alpha$  and Ly  $\beta$  spectra along a sightline for initial neutral fraction  $(f_{\text{HI}})_{\text{init}} = 0.02$  at  $t_Q = 1$  Myr. In each panel, we consider a different value for the optical depth of the Ly  $\alpha$  forest at the redshift  $z' = [\lambda_{\beta}(1+z)/\lambda_{\alpha}] - 1$  corresponding to the Ly  $\beta$  absorption. For  $\tau_{\alpha}(z') = 0$  (top panel), the contribution from the lower redshift Ly  $\alpha$  forest is neglected. For  $\tau_{\alpha}(z') = 2, 4$  (middle and bottom panels), we experiment with different levels of contribution from the optical depth from the  $z = 5.75$  Ly  $\alpha$  forest. Varying  $\tau_{\alpha}(z')$  results in a dramatic change in the observed Ly  $\beta$  flux.





**Figure D1.** Left: projected map of the He II fraction after  $t_Q = 10$  Myr in the simulation with an average initial neutral hydrogen fraction of  $\langle f_{\text{H I}} \rangle_{\text{init}} = 0.002$ . Middle: the median neutral He II fraction shown at  $t_Q = 1$  Myr (black),  $t_Q = 3$  Myr (red) and  $t_Q = 10$  Myr (blue). Right: the median temperature along our sightlines for the simulation with  $\langle f_{\text{H I}} \rangle_{\text{init}} = 0.002$  shown at  $t_Q = 1$  Myr (black),  $t_Q = 3$  Myr (red) and  $t_Q = 10$  Myr (blue).

spectrum when  $\tau_\alpha(z') = 0$ . This results in a correspondingly larger near zone. When we tested the ratio of Ly  $\beta$  near-zone sizes to Ly  $\alpha$  near-zone sizes, we reproduce the results of Bolton & Haehnelt (2007b), where a smaller volume weighted neutral hydrogen fraction gives a larger Ly  $\beta$ /Ly  $\alpha$  near-zone ratio.

However, when we include the additional contribution to the optical depth due to lower redshift Ly  $\alpha$  absorption, we find that the flux drops accordingly. We still find some in the Ly  $\beta$  region for  $\tau_\alpha(z') = 2$ , but for  $\tau_\alpha(z') = 4$  we see no significant transmission of flux along this sightline and Ly  $\beta$  near zones lose their effectiveness as a probe of the neutral fraction at  $z = 7$ . They may, however, still act a valuable probe at lower redshift where the ‘contamination’ of the Ly  $\beta$  region by Ly  $\alpha$  absorption is lower.

#### APPENDIX D: HELIUM IONIZATION FRONTS

We have also investigated how the helium ionization fronts progress and the effect that this has on the temperature of the IGM surrounding the QSO. For a simulation with a large photoionization rate  $\Gamma$  (here we present results for  $\log \Gamma_{\text{H I}} (\text{s}^{-1}) = -13.7$ ), we find that most of the helium is in He II. Otherwise, for smaller  $\Gamma$ , we see a mixture of He I and He II, with the He I found in the higher density regions. In the left-hand panel of Fig. D1, we present a projection of the He II fraction after 10 Myr. We find that the front has travelled a much smaller distance than say the front ionizing the H I (top panel of

Fig. 3) and the shape is reminiscent of the propagation of a H II front into a neutral IGM (bottom panel of Fig. 3).

In the middle panel of Fig. D1, we show the median He II fraction across our sightlines at  $t_Q = 1, 3$  and 10 Myr. Again, as with the case of the simulations with where the hydrogen in the IGM is initially neutral, we find that the front continues to grow steadily over the 10 Myr we simulate. At  $t_Q = 1$  Myr, the front has travelled just over 1 pMpc from the host halo. This corresponds to the region of highly ionized hydrogen around the host halo (right-hand panel of Fig. 2). We also find a low He II fraction in the immediate vicinity of the host halo where the gas is very hot.

We find that although there is a temperature boost associated with the passage of the He II front, it provides an increase of about 20 per cent only (right-hand panel of Fig. D1). This will not have much of an effect on the recombination rate and hence the near-zone sizes we measure. The radius of the thermal proximity zone is similar in the three regions around our three host haloes and we measure the same temperature at mean density around all three of our host haloes (where  $T_0$  is the mean volume-weighted gas temperature with a density within 5 per cent of the mean density). At  $z = 6$ , we find that  $\log T_0(\text{K}) = 4.30$ , within the  $1\sigma$  error bars of the measurement of the temperature around the  $z = 6$  quasar SDSS J0818+1722 by Bolton et al. (2010).

This paper has been typeset from a  $\text{\TeX}/\text{\LaTeX}$  file prepared by the author.